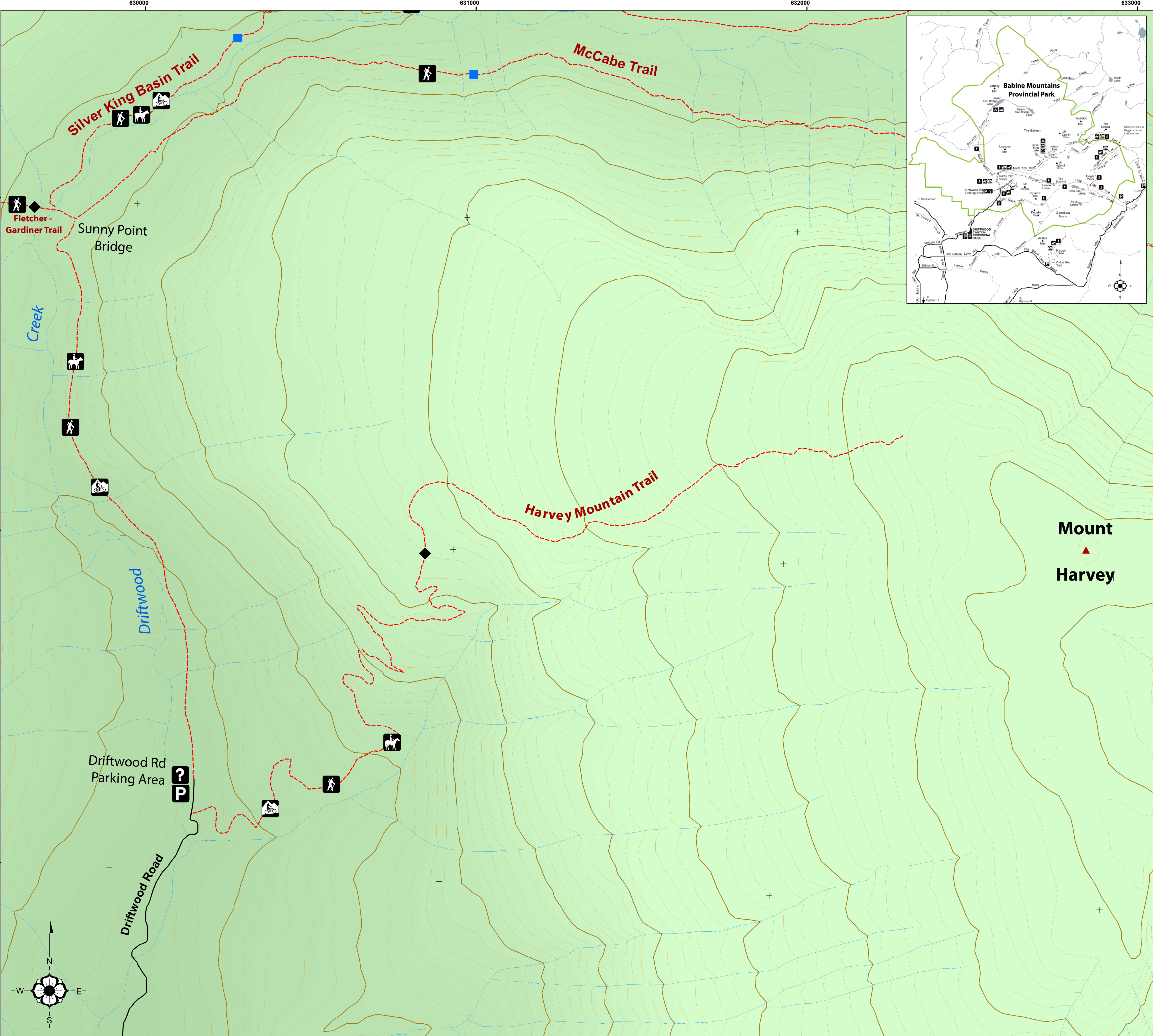


BABINE MOUNTAINS PROVINCIAL PARK

HARVEY MOUNTAIN TRAIL



Legend

Park Outline

Trails

Road

Marsh

Hiking Trail

Information

Parking

Horseback Trail

Viewpoint

Mountain Biking

Trail Classification

Easy

Moderate

Strenuous

Notes

Hikers should carry a supply of drinking water, as there is no potable water available on the hiking trail.

This is a wilderness area. Be well prepared before entering the backcountry. Park users should always be aware of bears and other wildlife in our park environment.

More Information

0100200400600

Metres

1:6,000

BC Parks

www.bcparks.ca

About Babine Mountains Provincial Park

Babine Mountains Provincial Park is a 32,400 hectare mountainous environment within the Skeena Mountains ecosection that offers some of the finest hiking opportunities in west-central British Columbia. The Provincial Park is one of the most accessible backcountry areas in northern B.C. Glacier-fed lakes, rugged peaks and extensive sub-alpine meadows provide day and overnight hiking opportunities. Park habitat supports healthy populations of mountain goat, moose, marmot and many species of birds. Rolling alpine plateaus, rugged mountains and an abundance of snow provides skiers, snowmobilers and snowshoers with experiences for all skill levels.

Harvey Mountain Trail

A steady climb takes hikers into an open grassy alpine hillside to the summit of Harvey Mountain (1744 m) with spectacular views of the Silver King Basin, Hudson Bay Mountain and the Bulkley Valley. The trail is 4.6km (one way) and gains 828m in elevation. For most hikers, the trail takes about 4 hours to get to the summit.

Harvey Mountain Trail (continued)

Some vegetation that can be seen along the way include white spruce, subalpine fir, lodgepole pine, trembling aspen, black huckleberry, bunchberry and feather mosses. As the trail continues into alpine tundra, sub-boreal spruce and wildflower species, such as Indian paintbrush, subalpine buttercup, red columbine, and mountain monkshood can be seen. Many wildlife species can also be observed along the trail. The most commonly seen animals are mountain goats, moose, black bear, ground squirrels, marmots and deer, as well as a host of smaller animals. Of the larger animals, only mountain goats make the area their year-round home. Occasionally grizzly bear, lynx and wolverine have been observed.

Harvey Mountain Trail - 4.6 km

Length (1-way): 4.6 km

Elevation Gain: 828 m

Estimated Hiking Time (1-way): 4 hrs

Date Created: January 14, 2008