

BC PARKS

MARINE RECREATION ACTION PLAN

(October 2022)



BC Parks

Desolation Sound Marine Park



TABLE OF CONTENTS

Acknowledgments	2
Introduction	3
Purpose	3
Goals	4
Plan Area	4
Overview and Map of BC Parks' Coastal Marine Protected Areas.....	5
Considerations	6
First Nations	
Climate Change	
Marine Jurisdiction	
Partner Support	
Plan Priorities	8
Provincial Focus.....	8
Regional Opportunities.....	8
BC Parks Program Areas	9
Related Work.....	11
Implementation	12
Goal 1: Understand Marine PA Values	13
Goal 2: Strengthen First Nations Relationships	14
Goal 3: Provide Quality Marine Recreation	16
Goal 4: Enhance External Collaboration	19
Goal 5: Promote Ocean Stewardship	21
Plan Success	22
Appendix 1: BC Parks' Marine Recreation Working Group	
Appendix 2: Regional Maps and Coastal Marine Protected Area Names	



ACKNOWLEDGMENTS

The Marine Recreation Action Plan underwent widespread engagement and we greatly appreciate the time invested by First Nations, key stakeholders and staff attending workshops, sharing ideas and supporting BC Parks' marine protected areas. In addition, we appreciate the guidance and support provided by Jessica Bratty of Confluence Solutions Consulting.

Special thanks to the members of BC Parks' internal Marine Recreation Working Group (see Appendix 1) - comprised of representation from headquarters and regional staff - who not only coordinated and participated in multiple meetings, but also provided valuable information, advice and support.

We gratefully acknowledge and respect the First Nations across the province on whose territories we work and play, and whose historical relationships with the land continues today.



Jackson Narrows Marine Park

INTRODUCTION

Stretching for more than 25,000 km, BC's coastline - with its complex ecosystems and unique habitats - supports a multitude of plant and animal species, provides a rich source of food and moderates our climate. Indigenous Peoples have lived here for thousands of years and today many other British Columbians call it home.

Visitors from far and wide are drawn to the natural beauty of BC's marine environments and to the variety of outdoor recreation opportunities available, such as wildlife viewing, boating, diving, paddle and water sports, shoreline activities and sport fishing. Dotted along the Pacific coastline - providing safe havens and amenities for marine travellers - are also campgrounds, small craft harbours, marine hot springs, fishing and ecotourism lodges, and marinas.

PURPOSE

Many First Nations, stakeholders, interagency partners, and federal and municipal governments have a role to play, along with BC Parks, in ensuring high-quality and sustainable recreation continues, not just within the 274 coastal protected areas [1] but also in the broader and evolving marine landscape. The plan demonstrates BC Parks' continuing commitment to these special places alongside and in support of other emerging marine plans and activities, e.g., First Nations stewardship initiatives, and provincial and federal marine initiatives.

With no one program area directly responsible for its implementation, this plan is a 'shared' initiative, developed for BC Parks staff who work in and/or have responsibilities for coastal protected areas. Consequently, the plan will be used to inform business planning and the development of staff work plans and provide value to other marine specialists, First Nations communities and stakeholders.

[1] Includes Park, Protected Area, Conservancy, and Ecological Reserve designations



Photo Credit: Iain Robert Reid

GOALS

The plan - first envisioned in the *BC Parks Future Strategy* and consistent with BC Parks' Strategic Plan - establishes a foundation from which staff, other government agencies, First Nations and stakeholders can work independently or together. The five goals in this plan are to:

Goal 1: Understand Marine Protected Area Values

Goal 2: Strengthen First Nations Relationships in Coastal Communities

Goal 3: Provide Quality Marine Recreation Today and in the Future

Goal 4: Enhance External Collaboration

Goal 5: Promote Ocean Stewardship

Each goal defines what we want to achieve, and through its objectives and actions set the direction for how we can begin to get there.

PLAN AREA

For the purposes of the plan, 'marine protected areas' refer to all BC Parks' coastal protected areas (PAs), including those with marine waters in their boundaries (182 PAs) and those with marine interface (92 PAs). The plan area includes highly productive yet delicate estuarine ecosystems i.e., where freshwater from rivers and streams mixes with salt water from the oceans, and PA lands located within 20 metres of marine waters, where beach activities, day use and camping occurs. The plan's application further inland is issue dependent and generally does not apply to marine protected areas where access is primarily from land. The plan's use of the term 'marine protected area' should not be confused with Marine Protected Area [1] - which has a specific *International Union for Conservation of Nature* (IUCN) meaning.

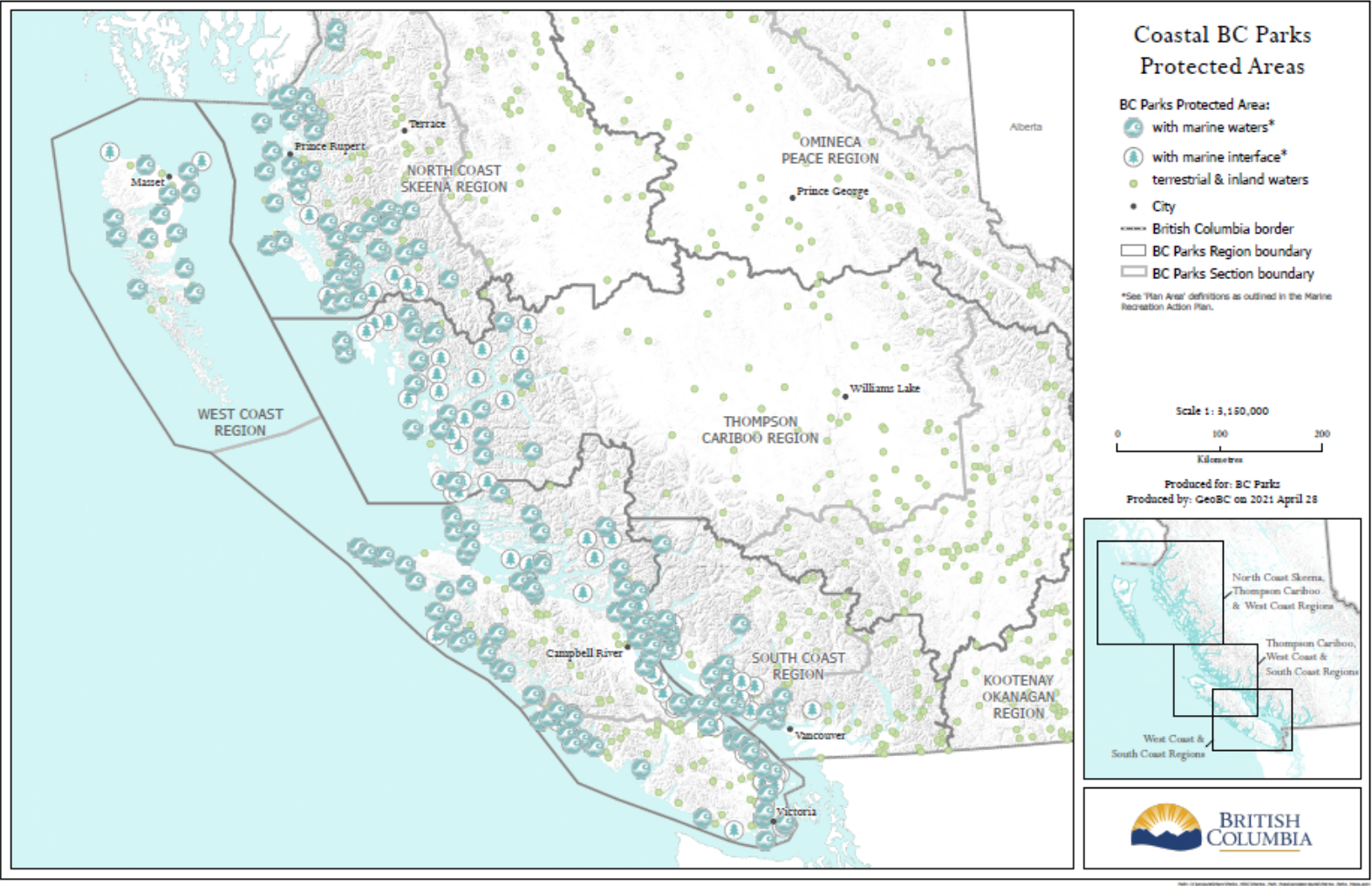
The following overview map illustrates the extent and locations of BC Parks' protected areas with marine foreshore and those with just marine interface. See Appendix 2 for a more detailed looked at these coastal protected areas by region.

[1] - The IUCN defines a marine protected area as: "a clearly defined geographical space, recognized, dedicated and managed, through legal or other effective means, to achieve the long-term conservation of nature with associated ecosystem services and cultural values."



Desolation Sound Marine Park

COASTAL BC PARKS PROTECTED AREAS OVERVIEW MAP



CONSIDERATIONS

First Nations

The lands that make up our marine protected areas are part of the traditional territories of First Nations, including Treaty Nations (search.gov.bc.ca for First Nations Treaties in BC) and those in Treaty processes (www.bctreaty.ca/negotiation-update). In recognition of this and to successfully achieve the plan's five goals, BC Parks remains committed to working with local First Nations - including being compliant with and responding to constitutionally protected rights and obligations set forth in First Nations Treaties and Agreements - while protecting the natural, cultural, and recreational values of marine protected areas for all British Columbians.

BC Parks' approach to reconciliation is guided by the United Nations Declaration on the Rights of Indigenous Peoples (UNDRIP), the *Declaration on the Rights of Indigenous Peoples Act* (2019), Draft 10 Principles, Truth and Reconciliation Commission, 2015 Commitment Document, Vision and Guiding Principles (2018), and Concrete Actions (2019).

This plan will be shared with coastal First Nations and offers BC Parks an important opportunity to preserve and promote the living cultures in marine protected areas, connect with the land and the rich heritage of the First Nations, and partner to advance marine projects that align with our values.





Climate Change

We must consider the influencing factors of climate change in marine environments, such as sea-level rise, storm-surge flooding, warmer ocean surface temperatures and acidification and shifting distribution of coastal species. Taking actions that reduce greenhouse gas emissions and address our vulnerabilities to the impacts of climate change are needed.

Marine Jurisdiction

While BC Parks oversees some provincial aquaculture and infrastructure permits, management of marine species, including recreational fishing, falls under the jurisdiction of Fisheries and Oceans Canada (DFO). Successful plan implementation will require close connections with this organization.

Partner Support

This plan also recognizes the critical role that our partners play in the work that we do. With volunteer-based organizations such as the Marine Parks Forever Society and BC Marine Trails Network Association championing initiatives such as land acquisitions and providing countless hours of volunteer time, we greatly acknowledge their historical contributions and recognize that their continued support as well as from many others partners is key to growing our reputation for world-class marine recreation. BC Parks will share this plan with these marine organizations as we begin implementation.

PLAN PRIORITIES

Each goal in the plan outlines a number of objectives and a set of actions.

Provincial Focus

BC Parks will establish annual themes and priorities to address actions that are provincial and/or more foundational tasks. Program area and regional staff will help determine key area(s) of focus for the year, as well as the collaboration and support needed.

Regional Opportunities

The plan is also designed to be implemented regionally. This approach allows staff the flexibility to establish priorities at a local or PA level and initiate projects and activities as time, funding and support, e.g., partners, are available.

While some actions may need to occur first, others may not be required at all. Regional staff will assess priorities and actions which are most relevant for the marine protected areas in their region.

Regional staff will reach out to First Nations to discuss the plan's implementation. Stakeholders are encouraged to bring forward project ideas to BC Parks and how they may be able to support them.





BC PARKS PROGRAM AREAS

While the plan focuses specifically on marine protected areas, many of its actions have strong connections to day-to-day and emerging activities across the agency. BC Parks program areas and their general responsibilities – in collaboration with Regional Operations Branch - are listed below:

- **CAPITAL INVESTMENT Program** - responsible for managing the Facility Management Program, including capital construction projects, facility standards and the safe drinking water program.
- **ENGAGEMENT, EDUCATION & ENHANCEMENTS Program** - responsible for park visitor education, K-12 school resources, public outreach, community partnerships, volunteers, donations and the Park Enhancement Fund.
- **CONSERVATION Program** - responsible for conservation direction, policies, strategies and guidelines for the management of ecosystem and cultural values.
- **INDIGENOUS RELATIONS Program** - responsible for policy, procedures and guidelines, strategic initiatives and facilitation of First Nations engagement.

BC Parks acknowledges that all programs play an important role in reconciliation. Reconciliation at BC Parks means acknowledging that work with First Nations is an integral part of our continuing role in land management and is a shared responsibility of everyone in the agency.



- **PLANNING & LAND ADMINISTRATION Program** - responsible for acquisition, disposition and administration of land, defining and establishing new protected areas, developing protected area management direction, and managing information systems, registries and data.
- **RECREATION SERVICES Program** - responsible for recreation services and programs including park operator agreements, recreation policy and standards, park use permits and economic business analysis and visitor use data collection and management.
- **REGIONAL OPERATIONS Branch** - responsible for BC Parks' operational program delivery.
- **SAFETY, COMPLIANCE & ENFORCEMENT Program** - responsible for BC Parks' compliance and enforcement and safety programs policy, training and support.
- **VISITOR SERVICES Program** - responsible for managing public information and digital channels (including social media, BC Parks' website and Park Info) as well as the BC Parks Reservation Service.



Khutzeymateen Park / K'tzim-A-Deen Grizzly Sanctuary
Photo Credit: Chris Gale

RELATED WORK

As you review this plan, please take notice of related work that is already happening in BC Parks. Through the '**Did You Know?**' sidebar, the plan draws attention from its actions to a few highlights from relevant program area (core) work, and in some cases, specific activities and/or projects that staff are currently working on.

Example:

Goal 4: Build Relationships

Action:

- Work with partners to recruit, train and support volunteer opportunities in marine protected areas.

This action may connect to broader work being done by the Engagement, Education & Enhancements Program and support staff in recruiting, training and managing park volunteers in marine protected areas.

Did You Know?

Engagement, Education & Enhancements Program:

- Supports staff to recruit, train and manage park volunteers.

IMPLEMENTATION

One of the main drivers for completing this plan is to provide staff with more direction on managing marine recreation than we currently have in place. The plan will also receive annual funding from the Licence Plate Program to support the delivery of some projects and activities.

Staff will incorporate the plan and its actions through business planning processes, as priorities and/or issues emerge and where and when it makes the most sense, e.g. availability of stakeholders and First Nations and funding. While the plan outlines a number of actions to help achieve its goals and objectives, all actions will not necessarily occur in all protected areas.

Some examples of actions 'at-work' are included to inspire ideas or encourage inter-regional and multi-jurisdictional learning opportunities: how was it managed, what worked well, what might be done differently in marine protected areas?

BC Parks' Marine Recreation Working Group will continue to champion the plan's implementation and delivery of projects. This group may also help establish provincial-level priorities, develop surveys and other measurement tools and report out on the plan's progress and potential challenges and modifications.



GOAL 1: UNDERSTAND MARINE PROTECTED AREA VALUES

BC PARKS' MARINE AREAS ARE RICH IN THE VALUES THEY PROTECT AND THE OPPORTUNITIES THEY OFFER. WE MUST CONTINUE TO FILL KNOWLEDGE GAPS RELATED TO KEY NATURAL, CULTURAL AND RECREATIONAL VALUES AND IDENTIFY THE THREATS THEY FACE. IMPROVING OUR ACCESS TO INFORMATION AND USE OF ANALYSIS TOOLS WILL STRENGTHEN OUR MANAGEMENT OF RECREATION IN THESE MARINE ENVIRONMENTS.

Improve Marine Values Data

Actions

- Review and identify knowledge gaps in marine protected area values and threats and prioritize the filling of these gaps.
- Improve the identification and collection of marine values and threats from existing sources, e.g., management plans, Marine Plan Partnership (MaPP), Marine Protected Area Technical Team (MPATT), Indigenous Knowledge, cultural and archeological assessments, historical research/surveys, Natural Resource Information System, Fisheries and Oceans Canada, such as with SeaSketch. Develop staff guidance on how to access this data and, as appropriate, provide information in the Protected Areas Resource Catalogue (PARC).

Monitor Visitor Use & Impacts on Marine Habitats

Actions

- Identify gaps in marine visitation in BC Parks' Attendance System and prioritize filling these gaps, such as in high use/impact areas, land vs. marine use, commercial recreation (park use permit) and based on local and First Nations needs.
- Research and invest in innovative data collection technologies such as remote satellite imagery, ship tracking platforms and/or remote cameras. Explore potential partnerships with other agencies such as Fisheries and Oceans Canada, First Nations, marine recreation stakeholders and park use permittees to help record visitor attendance/vessel traffic in marine PAs.
- Using Long-Term Ecological Monitoring (LTEM) program guidance, and updating or developing new marine LTEM protocols as necessary, develop and implement coastal monitoring plans in intertidal habitats where activities are having adverse impacts on intertidal species.

Did You Know?

Conservation Program

- Maintains a map-based tool called the Protected Areas Resource Catalogue (PARC) that pulls data from multiple sources.
- Sets guidance for and establishes Long-Term Ecological Monitoring plots.

Planning & Land Administration Program

- Maintains information systems, registries and data about protected areas (PAs) boundaries/attributes, develops management direction and collaborates with others to support and implement interagency agreements that result in enhanced land and marine protection.

Indigenous Relations Program

- Strengthens BC Parks' recognition and respect for reconciliation information, Indigenous values, laws and interests.

Recreation Services Program

- Manages BC Parks' attendance system, including developing provincial standards and statistical reporting of visitor use.

GOAL 2: STRENGTHEN FIRST NATIONS RELATIONSHIPS IN COASTAL COMMUNITIES

FIRST NATIONS HAVE A DEEP CONNECTION TO THEIR TRADITIONAL TERRITORIES AND CONTINUE TO PRACTICE STEWARDSHIP AND CULTURAL ACTIVITIES IN MARINE PROTECTED AREAS. BC PARKS IS COMMITTED TO STRENGTHENING RELATIONSHIPS WITH FIRST NATIONS BY COLLABORATING ON COMMON INTERESTS IN THE MANAGEMENT, PROTECTION AND PRESERVATION OF PROTECTED AREAS WHILE UNDERTAKING SUSTAINABLE USES THAT BENEFIT ALL BRITISH COLUMBIANS.

Foster Shared Stewardship

Actions

- Support and build capacity for coastal First Nations communities in marine protected areas, e.g. pilot a guardian stewardship program project.
- Review Park Use Permit referral processes and determine if they are working as intended or need improving. Establish a pilot project, if required.
- Work with First Nations partners to facilitate their attendance at regional ranger training session(s) offered in/near coastal communities.

Did You Know?

Indigenous Relations Program

- Fosters shared stewardship and management of PAs with Indigenous partners.

Recreation Services Program

- Sets provincial guidance, policies and procedures for the Park Use Permit program and supports regional staff in decision-making and program delivery.

Safety, Compliance & Enforcement Program

- Works with regional operations staff to establish, train and deliver the Compliance and Enforcement Program.



Actions

- Continue to actively work with First Nations, including Treaty First Nations, through meetings, events and other opportunities related to BC Parks marine protected areas management.
- Maintain participation in interagency forums, e.g. Coastal Calls, and regional cross-agency teams, on matters related to coastal protected areas and First Nations relations.
- Establish connections and efficiencies within existing collaborative marine forums such as MPATT; and identify additional areas for BC Parks involvement.
- To ensure the protection of First Nations cultural values, and sites, and to support cultural and, where applicable, archeological assessments and the use of signs.
- Build and expand on the success of learning exchange opportunities with local First Nations to learn about their history and local culture in marine protected areas, e.g. Namgis’ cultural training with staff, tours with Snuneymuxw First Nations in Petroglyph Park.
- Work with First Nations to develop educational stories/materials about their culture and values for marine park visitors and apply the knowledge through management practices. Products may include interpretive signs, and/or information for BC Parks' website, social media.

Did You Know?

Indigenous Relations Program

- Fosters cultural training from First Nations.
- Supports the proactive protection of areas of historical and cultural significance.

Planning & Land Administration Program

- Collaborates with First Nations on PA management and the protection of cultural values, and supports the commitments and agreements made with Indigenous Nations.

Visitor Services Program

- Manages BC Parks' website, information channels, social media, and print publications.



GOAL 3: PROVIDE QUALITY MARINE RECREATION TODAY AND IN THE FUTURE

Porteau Cove Park
Photo Credit: Gregory Simpson

VIRTUALLY EVERY TYPE OF OUTDOOR RECREATION IS SEEING INCREASED POPULARITY AND GROWTH, INCLUDING ACTIVITIES ON BC'S COASTLINES AND MARINE WATERWAYS. ENSURING VISITORS CONTINUE TO EXPERIENCE HIGH-QUALITY RECREATION IN MARINE PROTECTED AREAS, MEANS WE MUST MAKE DECISIONS THAT MANAGE VISITATION, CONSERVE ECOLOGICAL VALUES, CONSIDER TRADITIONAL KNOWLEDGE AND CULTURAL ACTIVITIES, AND RESPOND TO CLIMATE CHANGE TRENDS AND RISKS.

Protect Marine Values and Enhance Recreational Experiences

Actions

- Identify, classify and rank marine recreation activities, e.g., recreational fishing, camping, boating, wildlife viewing by the potential impacts to marine protected area values and visitor experiences such as from commercial oyster/fish farms, invasive species, human waste and garbage, and intensive use.
- Where coastal areas are experiencing the highest impacts (above) develop consultation and engagement plans and design and implement mitigation and visitor use management strategies and tools, where appropriate such as camping reservation requirements, and human waste and debris management strategies.
- Conduct research on emerging marine recreation trends to inform potential decisions on coastal protected areas recreation opportunities, proposals and fees.
- Lead and support habitat analysis, restoration efforts and climate change mitigation and adaptation measures in marine protected areas, e.g., eelgrass surveys, shoreline restoration and seek opportunities to work with interested First Nations, e.g., joint funding proposals.

Did You Know?

Indigenous Relations Program

- Supports the exercise of Aboriginal rights such as hunting, fishing, gathering, social, and ceremonial activities in PAs.

Conservation Program

- Restores function and resilience of key ecosystems that have been damaged or are subject to unnatural processes.
- Prevents, removes and/or treats invasive plants and animals within PAs, and follows through with site restoration and monitoring.

Recreation Services Program

- Sets provincial guidance, policies and procedures for the Park Use Permit program and supports regional staff in decision-making and program delivery.

Visitor Services Program

- Develops and manages the BC Parks Reservation Service.



Lax Ka'gaas / Campania Conservancy

Improve Marine Facilities and Signs

Actions

- Identify and replace or construct new marine site facilities (designated tent pads, food caches, toilets, trails) in alignment with visitor use management strategies for the area, as appropriate and within existing budgets.
- Update BC Parks' facility standards, sign standards and facility specifications to include 'climate ready' and 'climate wise' standards, and specific operational requirements for marine protected areas and to recognize and protect cultural values. Also incorporate information regarding existing marine conservation measures/fishing closures in and adjacent to coastal protected areas.



Wallace Island Marine Park

Did You Know?

Capital Investment Program

- Develops facilities standards and works with regional operations staff to deliver the capital program.

Engagement, Education & Enhancements Program

- Develops and maintains interpretive sign standards.
- Supports regional staff in development of interpretive signs.
- Works with Indigenous Relations Program to integrate Indigenous stories and perspectives into the visitor experience.

Indigenous Relations Program

- Expands linkages to First Nations culture, heritage, and values.

Recreation Services Program

- Sets provincial recreation guidance, policies and procedures and supports delivery by regional staff.



Juan de Fuca Park

Photo Credit: Iain Robert Reid

Implement Sustainable Marine Recreation Management

Actions

- Using values data/information acquired from management plans, First Nations, other jurisdictions, and/or as a result of visitor use management strategies, implement ecologically/culturally sensitive “no go” or “go” sites/zones in marine protected areas. These areas may be identified with restoration fencing, signs and/or spatially on BC Parks’ website. Some actions may be required to identify Indian Reserves or in areas needing temporary recovery from coastal erosion/storm events.
- To mitigate impacts on marine values, identify where designated sites are required or redirected use (inside/outside the marine protected area) may be accommodated.
- Collate information on where there are interests in expanding or enhancing marine recreation, e.g. marine/story trails, cultural tourism/economic activities, and work with interested First Nations and stakeholders on developing opportunities, where feasible.
- Research the effectiveness of existing marine protected area fees and, as necessary, develop a marine protected areas fee strategy, e.g., a marine recreation pass, and/or propose new fee regulations.
- Seek input on and develop guidelines for stakeholders and First Nations to propose new, non-commercial recreation projects (activities/sites) in marine protected areas.
- Identify and prioritize new marine recreation projects that align with protected area management plan direction and are supported by local First Nations.

Did You Know?

Planning & Land Administration Program

- Works with **First Nations** and stakeholders to identify and document values, determines appropriate uses and sets management direction for PAs.

Indigenous Relations Program

- Supports the proactive protection of areas of historical and cultural significance.
- Expands linkages to First Nations culture, heritage, and values.
- Supports the exercise of Aboriginal rights such as hunting, fishing, gathering, social, and ceremonial activities in PAs.

Recreation Services Program

- Manages the Recreation User Fees Program.
- Establishes provincial recreation policies.

Visitor Services Program

- Manages BC Parks’ website, information channels and social media, print publications.

GOAL 4: ENHANCE EXTERNAL COLLABORATION



Photo Credit: Iain Robert Reid

BC PARKS RELIES ON MANY PARTNERS SUCH AS OTHER GOVERNMENT AGENCIES, NON-PROFIT ORGANIZATIONS, LOCAL COMMUNITIES, BUSINESSES AND DONORS TO MAINTAIN A RELEVANT PROTECTED AREAS SYSTEM THAT REFLECTS ITS DIVERSE ELEMENTS. WE MUST CONTINUE TO ENGAGE WITH OUR VALUABLE MARINE PARTNERS, FINDING SUPPORT FOR AND WORKING TOGETHER IN THESE COASTAL PROTECTED AREAS.

Build Relationships

Actions

- Communicate BC Parks' marine recreation priorities and identify opportunities for other government agencies, partners, stakeholders, universities, community and user groups to engage in activities that support and/or promote marine recreation planning and projects, such as through a BC Parks' lead forum.
- Establish a contact list of relevant coastal agencies, partners, stakeholders and user groups, such as Coastal Restoration Society, Ocean Legacy Foundation, Surfrider Foundation, Coastal First Nations, Small Ship Tour Operators Association, Ocean Wise – Ocean Bridge Direct Action and track ideas and issues.
- Work with partners to recruit, train and support volunteer opportunities in marine protected areas.

Did You Know?

Engagement, Education & Enhancements Program

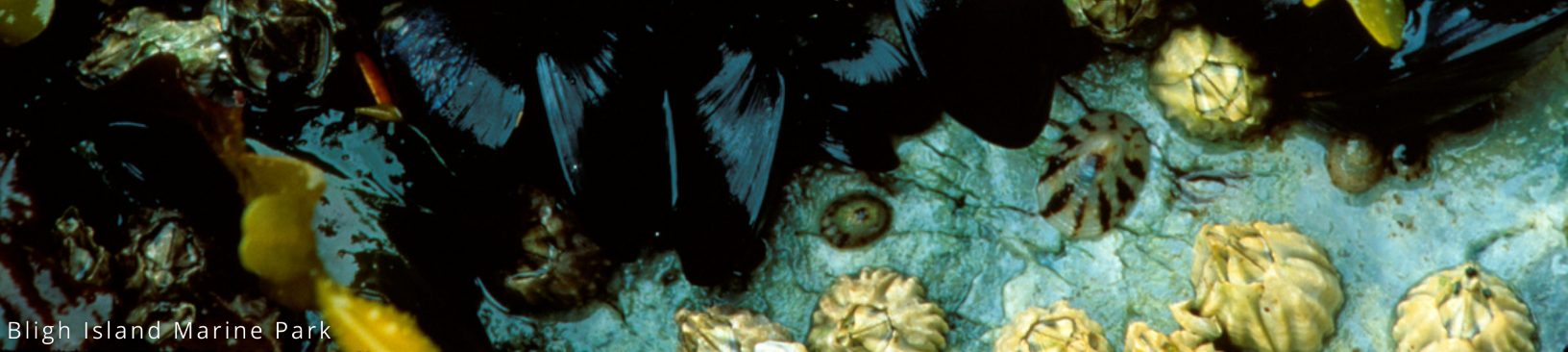
- Supports staff to recruit, train, and manage park volunteers.

Conservation Program

- Creates connections such as engaging in conservation partnerships, and identifying and developing new partnerships that provide support for ecological and cultural conservation programs within PAs.
- Recruits, supports, recognizes and fosters good relationships with volunteers.



Brim River Hot Springs Protected Area



Bligh Island Marine Park

Leverage Funding for Marine Protected Areas

Actions

- Communicate priority marine protected area projects with partners and discuss potential funding sources/leveraging.
- Encourage donations to external partners that support marine recreation in BC Parks, e.g., BC Parks Foundation.
- Leverage funding for marine recreation projects from partners by contributing BC Parks' funds, e.g., from the Licence Plate Program.
- Leverage funding for land acquisitions in marine areas, through the Land Administration Program and its processes.

Support Compliance Initiatives

Actions

- Explore opportunities to collaborate with other levels of government, e.g., DFO Conservation and Protection Branch and Guardian and First Nations enforcement programs, on compliance and enforcement activities in coastal areas.
- Foster partnerships with stakeholders, recreation user groups and Park Use Permittees to strengthen responsible marine recreation and regulatory compliance.



Photo Credit: Iain Robert Reid

Did You Know?

Planning & Land Administration Program

- Manages prioritization, purchase and donation of private lands for addition to the PA system, enhances provincial funding with the support of partners.

Engagement, Education & Enhancements Program

- Works with the BC Parks Foundation on fundraising for park projects.
- Provides project funding from the Park Enhancement Fund (PEF), including the BC Parks License Plate Program.

Safety, Compliance & Enforcement Program

- Works with regional operations staff to establish, train and deliver the Compliance and Enforcement Program.

Engagement, Education & Enhancements Program

- Works with staff and partners to strengthen responsible recreation messaging and promotion of stewardship behaviour in parks.
- Develops training and park visitor education material related to BC Parks.



GOAL 5: PROMOTE OCEAN STEWARDSHIP

Photo Credit: Iain Robert Reid

OUTDOOR RECREATION AND THE STEWARDSHIP OF MARINE PROTECTED AREAS ARE MUTUALLY DEPENDENT AND ARE OFTEN SUPPORTED AND ENHANCED BY THOSE WHO DIRECTLY EXPERIENCE BC PARKS. OCEAN STEWARDS WILL IMPROVE THE AWARENESS OF RESPONSIBLE MARINE RECREATION ETHICS AND THE RESPECT FOR CULTURALLY SIGNIFICANT VALUES AND ACTIVITIES IN THESE MARINE ENVIRONMENTS.

Foster Responsible Marine Recreation

Actions

- Research marine recreation and stewardship/ocean literacy and renew messages for use by BC Parks. Marine recreation/stewardship policies, ethics, standards/regulations, wildlife-viewing and cultural messaging may come from - or as a result of collaboration with - other jurisdictions such as DFO, First Nations, and/or organizations such as MPATT, MaPP, BC Marine Trails Network Association, Marine Parks Forever Society, Georgia Strait Alliance's Guide to Green Boating and Destination BC.
- Update and share marine recreation/cultural stewardship messaging on BC Parks' website, social media, and extranet sites. Explore ways to work with yacht clubs and marinas, Power/Sail Squadrons, authors of marine guidebooks, etc.
- Create responsible marine recreation and cultural training resources such as videos, brochures, tutorials for BC Parks' staff and volunteers, park operators, and Park Use Permittees' and their clients. Work with organizations such as DFO, on shared initiatives and ensure cultural content is developed with relevant First Nations.
- Research companies and/or publications that use BC Parks' protected areas boundaries, e.g. electronic navigation charts, such as Navionics and Garmin, marine guidebooks, etc. and explore ways to promote data-sharing and improve boundary recognition.

Did You Know?

Engagement, Education & Enhancements Program

- Promotes consistent responsible recreation messaging to park visitors and through tourism partnerships.
- Provides educational material to park visitors digitally and in person through park operators, partner groups and Discover Parks Ambassadors.

Indigenous Relations Program

- Facilitates opportunities for First Nations to share knowledge with park visitors.
- Expands linkages to **First Nations** culture, heritage, and values.

Planning & Land Administration Program

- Maintains information systems, registries and data about PA boundaries/attributes.

Conservation Program

- Provides public education, experiences and outreach to connect people to nature and conservation concepts.



Plan Success

Key to an effective plan will be:

- incorporating actions into business planning processes;
- implementing annual provincial and regional priorities and integrating actions and initiatives into medium-long term program area planning;
- innovation from staff and partners;
- collaborating and engaging with First Nations and stakeholders and working with them on its implementation; and
- securing available funding, e.g., the License Plate Program.

To ensure ongoing success, BC Parks will evaluate the plan's success by:

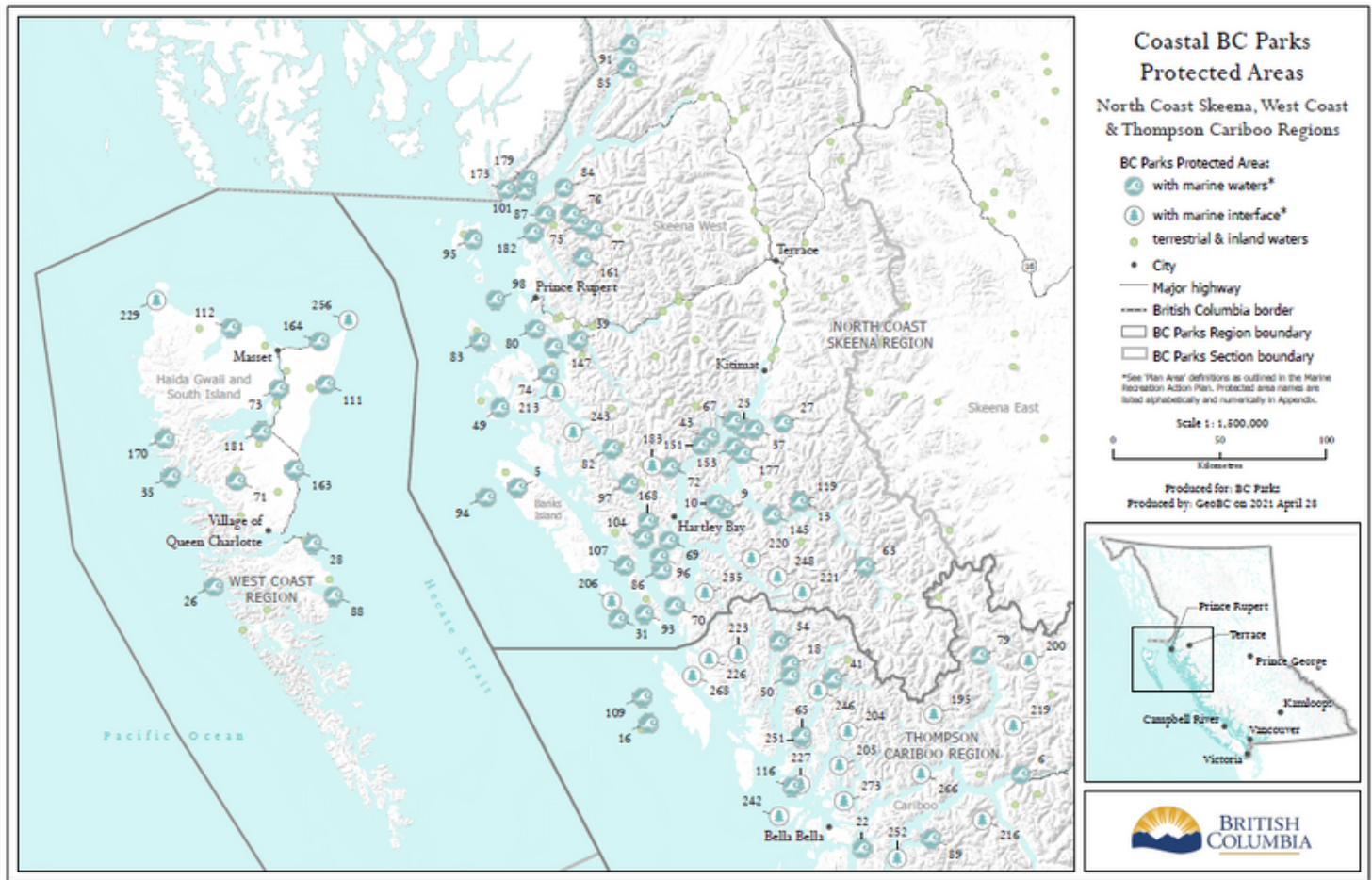
- monitoring outcomes (TBD) e.g., the number/percent/evidence of hours spent, new relationships built, training provided, products developed, facilities/signs installed, visitors reached, etc. related to marine-focused initiatives and actions;
- surveying BC Parks staff - e.g., on the plan's implementation, integration into work plans, collaboration and engagement, successes/obstacles, as well as seeking feedback and insights from coastal marine recreation stakeholders and First Nations; and
- reporting out on successfully completed actions/projects.

Appendix 1 – BC Parks' Marine Recreation Working Group

Participants	Active Members
Sydney Martin - <i>Manager, Visitor Programs</i>	Niamh Murphy – <i>Manager, Recreation Services</i>
Sarah Fennel - <i>Recreation Business Specialist</i>	Lynn Bremner – <i>A/Recreation Business Specialist</i>
Rod Dalziel - <i>Area Supervisor, South Coast</i>	Rod Dalziel - <i>Area Supervisor, South Coast</i>
Elyse Curley – <i>Community Liaison Officer, South Coast</i>	Vacant
Aaron Miller - <i>PPA Section Head, West Coast</i>	Sarah Joannis - <i>Area Supervisor, West Coast</i>
Peter Wood - <i>Area Supervisor, Central Coast</i>	Vacant
Adrian Wynnyk - <i>Recreation Section Head, Thompson-Cariboo</i>	Gina Bugslag – <i>Recreation Section Head, West Coast</i>
Diana Christianson - <i>Park Ranger, North Coast</i>	Jade Dawson – <i>Area Supervisor, Skeena Nass</i>
Don Cadden - <i>Regional Director, West Coast</i>	Volker Michelfelder - <i>Regional Director, Thompson-Cariboo</i>
Stephen Ban - <i>Protected Areas Applied Ecologist (Aquatic/Marine)</i>	Stephen Ban - <i>Protected Areas Applied Ecologist (Aquatic/Marine)</i>
Jaime Hilbert - <i>Senior Parks and Protected Areas Planner</i>	Jaime Hilbert - <i>Senior Parks and Protected Areas Planner</i>
Ryan Yardley and Sarah Burger - <i>Indigenous Relations Advisors</i>	Vacant
Kassidy Kelly – <i>Youth Employment Program Intern</i>	

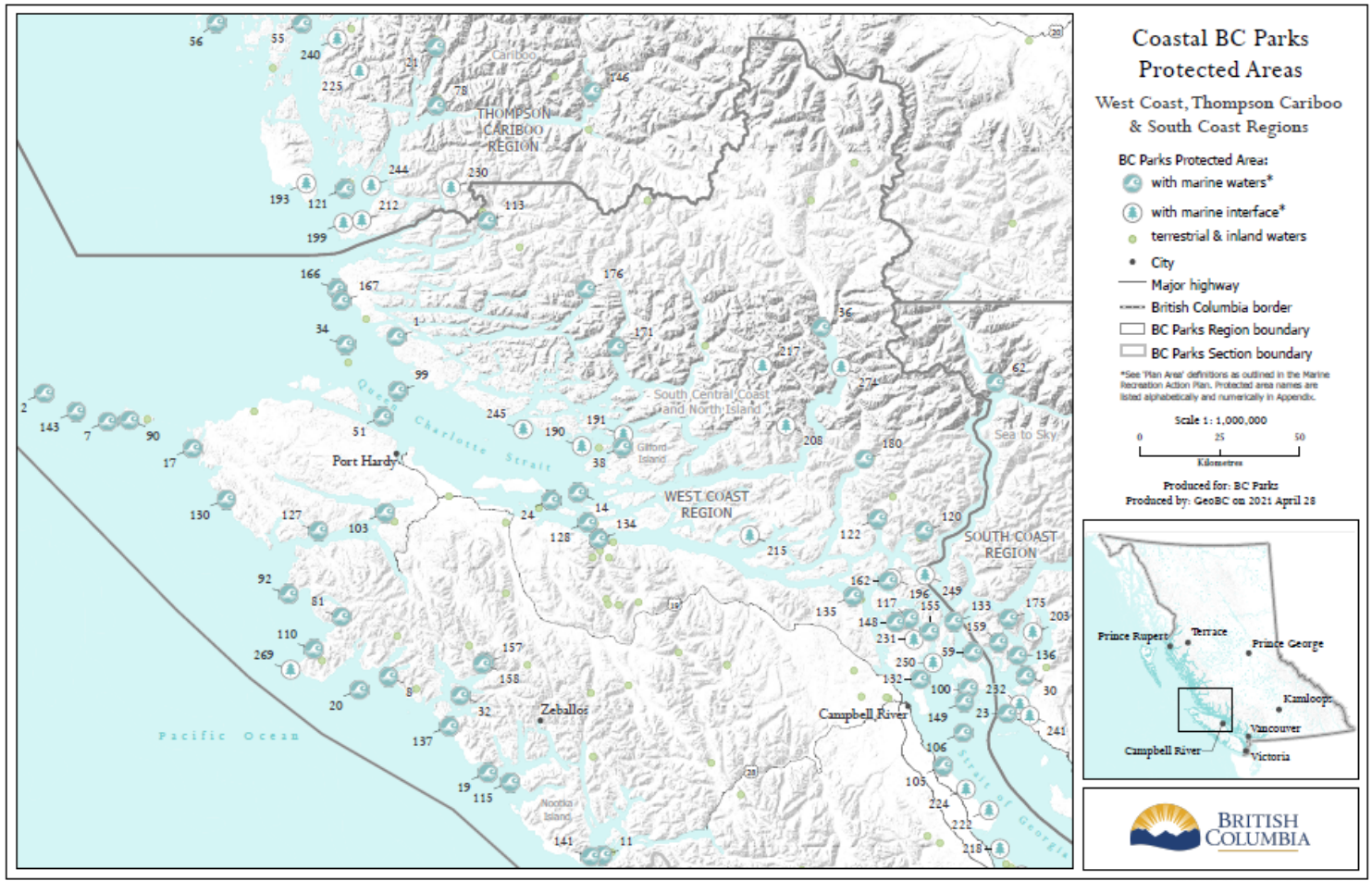
Appendix 2 – Regional Maps and Coastal Marine Protected Area Names

North Coast Skeena, West Coast & Thompson-Cariboo Regions



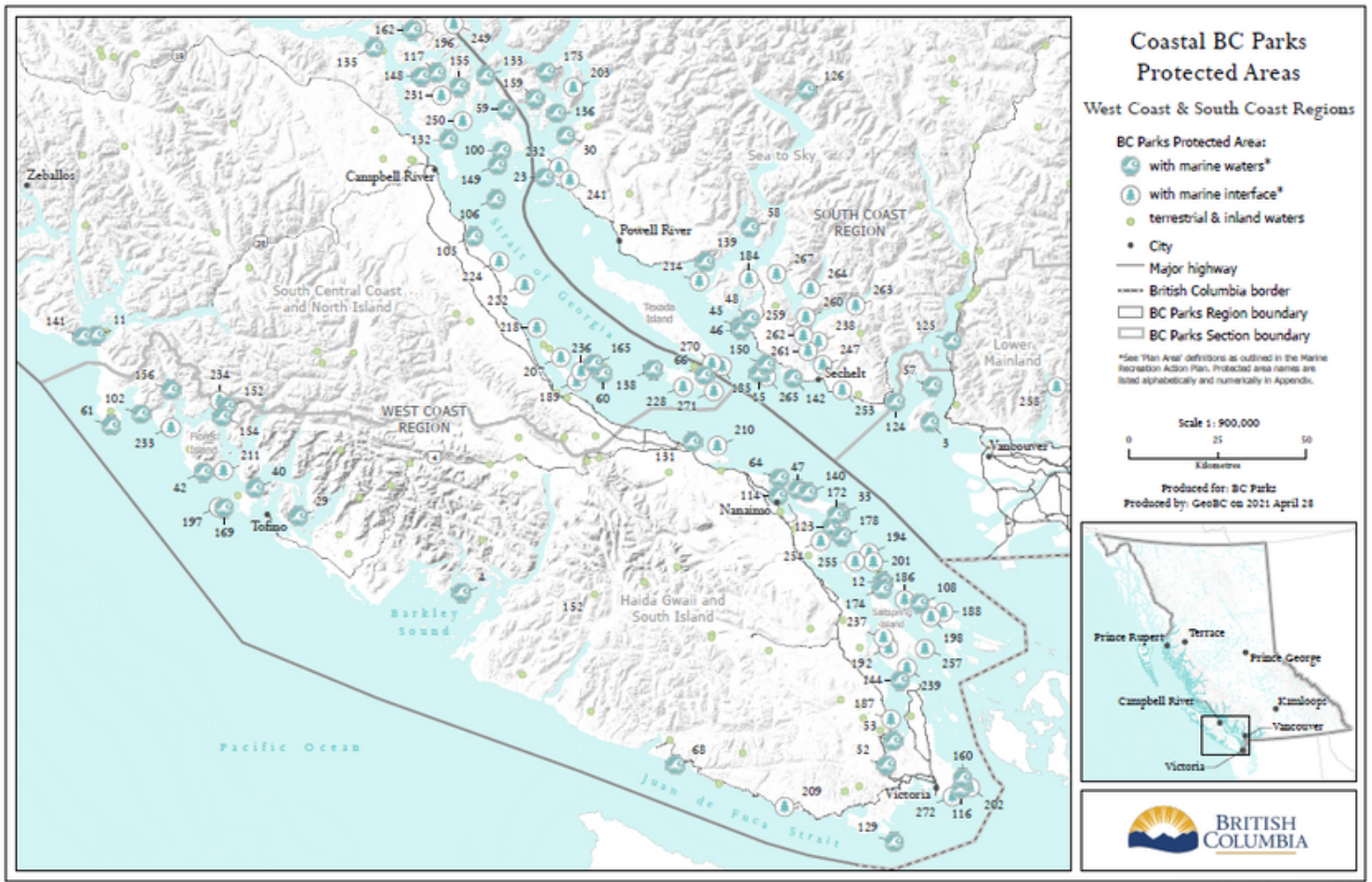
Note: Refer to the end of Appendix 2 for the names of all marine protected areas identified.

West Coast, Thompson-Cariboo & South Coast Regions



Note: Refer to the end of Appendix 2 for the names of all marine protected areas identified.

West Coast & South Coast Regions



Note: Refer to the end of Appendix 2 for the names of all marine protected areas identified.

Coastal BC Parks Protected Areas - With Marine Waters

No.	Name	Protected Area Region
1	Allison Harbour Marine Park	West Coast
2	Anne Vallee (Triangle Island) Ecological Reserve	West Coast
3	Apodaca Park	South Coast
4	Baeria Rocks Ecological Reserve	West Coast
5	Banks Nii Luutiksm Conservancy	North Coast Skeena
6	Bella Coola Estuary Conservancy	Thompson Cariboo
7	Beresford Island Ecological Reserve	West Coast
8	Big Bunsby Marine Park	West Coast
9	Bishop Bay - Monkey Beach Conservancy	North Coast Skeena
10	Bishop Bay - Monkey Beach Corridor Conservancy	North Coast Skeena
11	Bligh Island Marine Park	West Coast
12	Bodega Ridge Park	West Coast
13	Brim River Hot Springs Protected Area	North Coast Skeena
14	Broughton Archipelago Park	West Coast
15	Buccaneer Bay Park	South Coast
16	Byers/Conroy/Harvey/Sinnett Islands Ecological Reserve	Thompson Cariboo
17	Cape Scott Park	West Coast
18	Carter Bay Conservancy	Thompson Cariboo
19	Catala Island Marine Park	West Coast
20	Checleset Bay Ecological Reserve	West Coast
21	Clyak Estuary Conservancy	Thompson Cariboo
22	Codville Lagoon Marine Park	Thompson Cariboo
23	Copeland Islands Marine Park	South Coast
24	Cormorant Channel Marine Park	West Coast
25	Coste Rocks Park	North Coast Skeena
26	Daawuuxusda Conservancy	West Coast
27	Dala-Kildala Rivers Estuaries Park	North Coast Skeena
28	Damaxyaa Conservancy	West Coast
29	Dawley Passage Park	West Coast
30	Desolation Sound Marine Park	South Coast

Coastal BC Parks Protected Areas - With Marine Waters

31	Dewdney And Glide Islands Ecological Reserve	North Coast Skeena
32	Dixie Cove Marine Park	West Coast
33	Drumbeg Park	West Coast
34	Duke Of Edinburgh (Pine/Storm/Tree Islets) Ecological Reserve	West Coast
35	Duu Guusd Conservancy	West Coast
36	Dzawadi/Klinaklini Estuary Conservancy	West Coast
37	Eagle Bay Park	North Coast Skeena
38	Echo Bay Marine Park	West Coast
39	Ecstall-Spoksut Conservancy	North Coast Skeena
40	Epper Passage Park	West Coast
41	Fiordland Conservancy	Thompson Cariboo
42	Flores Island Park	West Coast
43	Foch-Gilttoyes Park	North Coast Skeena
44	Foch-Gilttoyes Protected Area	North Coast Skeena
45	Francis Point Ecological Reserve	South Coast
46	Francis Point Park	South Coast
47	Gabriola Sands Park	West Coast
48	Garden Bay Marine Park	South Coast
49	Gitxaala Nii Luutiksm/Kitkatla Conservancy	North Coast Skeena
50	Goat Cove Conservancy	Thompson Cariboo
51	God's Pocket Marine Park	West Coast
52	Goldstream Park	West Coast
53	Gowlland Tod Park	West Coast
54	Green Inlet Marine Park	Thompson Cariboo
55	Hakai Conservation Study Area	Thompson Cariboo
56	Hakai Luxvbalis Conservancy	Thompson Cariboo
57	Halkett Bay Marine Park	South Coast
58	Harmony Islands Marine Park	South Coast
59	Hathayim Marine Park [A.K.A. Von Donop Marine Park]	West Coast
60	Helliwell Park	West Coast
61	Hesquiat Peninsula Park	West Coast
62	Homathko Estuary Park	South Coast
63	Huchsduwachsd Nuyem Jees/Kitlope Heritage Conservancy	North Coast Skeena
64	Hudson Rocks Ecological Reserve	West Coast
65	Jackson Narrows Marine Park	Thompson Cariboo

Coastal BC Parks Protected Areas - With Marine Waters

66	Jedediah Island Marine Park	West Coast
67	Jesse Falls Protected Area	North Coast Skeena
68	Juan De Fuca Park	West Coast
69	K'distsausk/Turtle Point Conservancy	North Coast Skeena
70	K'nabiyaaxl/Ashdown Conservancy	North Coast Skeena
71	K'uuna Gwaay Conservancy	West Coast
72	K'waal Conservancy	North Coast Skeena
73	Kamdis Conservancy	West Coast
74	Kennedy Island Conservancy	North Coast Skeena
75	Khutzeymateen Inlet Conservancy	North Coast Skeena
76	Khutzeymateen Inlet West Conservancy	North Coast Skeena
77	Khutzeymateen Park [A.K.A. Khutzeymateen/K'tzim-A-Deen Griz	North Coast Skeena
78	Kilbella Estuary Conservancy	Thompson Cariboo
79	Kimsquit Estuary Conservancy	Thompson Cariboo
80	Kitson Island Marine Park	North Coast Skeena
81	Klaskish River Ecological Reserve	West Coast
82	Klewnuggit Inlet Marine Park	North Coast Skeena
83	Ksgaxl/Stephens Island Conservancy	North Coast Skeena
84	Ksi X' anmaas Conservancy	North Coast Skeena
85	Ksi Xts'at'kw/Stagoo Conservancy	North Coast Skeena
86	Ktisgaidz/Macdonald Bay Conservancy	North Coast Skeena
87	Kts'mkta'ani/Union Lake Conservancy	North Coast Skeena
88	Kunxalas Conservancy	West Coast
89	Kwatna Estuary Conservancy	Thompson Cariboo
90	Lanz And Cox Islands Park	West Coast
91	Larcom Lagoon Conservancy	North Coast Skeena
92	Lawn Point Park	West Coast
93	Lax Ka'gaas/Campania Conservancy	North Coast Skeena
94	Lax Kul Nii Luutiksm/Bonilla Conservancy	North Coast Skeena
95	Lax Kwaxl/Dundas And Melville Islands Conservancy	North Coast Skeena
96	Lax Kwil Dziidz/Fin Conservancy	North Coast Skeena
97	Lowe Inlet Marine Park	North Coast Skeena
98	Lucy Islands Conservancy	North Coast Skeena
99	Mahpahkum-Ahkwuna/Deserters-Walker Conservancy	West Coast
100	Mansons Landing Park	West Coast

Coastal BC Parks Protected Areas - With Marine Waters

101	Manzanita Cove Conservancy	North Coast Skeena
102	Maquinna Marine Park	West Coast
103	Marble River Park	West Coast
104	Maxtaks'm'aa/Union Passage Conservancy	North Coast Skeena
105	Miracle Beach Park	West Coast
106	Mitlenatch Island Nature Park	West Coast
107	Monckton Nii Luutiksm Conservancy	North Coast Skeena
108	Montague Harbour Marine Park	West Coast
109	Moore/Mckenny/Whitmore Islands Ecological Reserve	Thompson Cariboo
110	Muqqiwn/Brooks Peninsula Park	West Coast
111	Naikoon Park	West Coast
112	Nang Xaldangaas Conservancy	West Coast
113	Negiy/Nekite Estuary Conservancy	West Coast
114	Newcastle Island Marine Park	West Coast
115	Nuchatlitz Park	West Coast
116	Oak Bay Islands Ecological Reserve	West Coast
117	Octopus Islands Marine Park	West Coast
118	Oliver Cove Marine Park	Thompson Cariboo
119	Owyacumish River Park	North Coast Skeena
120	Palemin/Estero Basin Conservancy	West Coast
121	Penrose Island Marine Park	Thompson Cariboo
122	Phillips Estuary/?Nacinuxw Conservancy	West Coast
123	Pirates Cove Marine Park	West Coast
124	Plumper Cove Marine Park	South Coast
125	Porteau Cove Park	South Coast
126	Princess Louisa Marine Park	South Coast
127	Quatsino Park	West Coast
128	Qwiquallaaq/Boat Bay Conservancy	West Coast
129	Race Rocks Ecological Reserve	West Coast
130	Raft Cove Park	West Coast
131	Rathtrevor Beach Park	West Coast
132	Rebecca Spit Marine Park	West Coast
133	Rendezvous Island South Park	West Coast
134	Robson Bight (Michael Bigg) Ecological Reserve	West Coast
135	Rock Bay Marine Park	West Coast
136	Roscoe Bay Park	South Coast
137	Rugged Point Marine Park	West Coast
138	Sabine Channel Marine Park	West Coast
139	Saltery Bay Park	South Coast
140	Sandwell Park	West Coast

Coastal BC Parks Protected Areas - With Marine Waters

141	Santa Gertrudis-Boca Del Infierno Park	West Coast
142	Sargeant Bay Park	South Coast
143	Sartine Island Ecological Reserve	West Coast
144	Satellite Channel Ecological Reserve	West Coast
145	Shearwater Hot Springs Conservancy	North Coast Skeena
146	Sheemahant Conservancy	Thompson Cariboo
147	Skeena Bank Conservancy	North Coast Skeena
148	Small Inlet Marine Park	West Coast
149	Smelt Bay Park	West Coast
150	Smuggler Cove Marine Park	South Coast
151	Stair Creek Conservancy	North Coast Skeena
152	Strathcona Park	West Coast
153	Sue Channel Park	North Coast Skeena
154	Sulphur Passage Park	West Coast
155	Surge Narrows Park	West Coast
156	Sydney Inlet Park	West Coast
157	Tahsish-Kwois Park	West Coast
158	Tahsish River Ecological Reserve	West Coast
159	Teakerne Arm Park	South Coast
160	Ten Mile Point Ecological Reserve	West Coast
161	Thulme Falls Conservancy	North Coast Skeena
162	Thurston Bay Marine Park	West Coast
163	Tlall Conservancy	West Coast
164	Tow Hill Ecological Reserve	West Coast
165	Tribune Bay Park	West Coast
166	Ugwiwa'/Cape Caution - Blunden Bay Conservancy	West Coast
167	Ugwiwa'/Cape Caution Conservancy	West Coast
168	Union Passage Marine Park	North Coast Skeena
169	Vargas Island Park	West Coast
170	Vladimir J. Krajina (Port Chanal) Ecological Reserve	West Coast
171	Wakeman Estuary Conservancy	West Coast
172	Wakes Cove Park	West Coast
173	Wales Harbour Conservancy	North Coast Skeena
174	Wallace Island Marine Park	West Coast
175	Walsh Cove Park	South Coast

Coastal BC Parks Protected Areas - With Marine Waters

176	Wawley/Seymour Estuary Conservancy	West Coast
177	Weewanie Hot Springs Park	North Coast Skeena
178	Whaleboat Island Marine Park	West Coast
179	Winter Inlet Conservancy	North Coast Skeena
180	Xwakwe?Naxde?Ma/Stafford Estuary Conservancy	West Coast
181	Yaaguun Gandlaay Conservancy	West Coast
182	Zumtela Bay Conservancy	North Coast Skeena

Coastal BC Parks Protected Areas - With Marine Interface

No.	Name	Protected Area Region
183	Alty Conservancy	North Coast Skeena
184	Ambrose Lake Ecological Reserve	South Coast
185	Anderson Bay Park	South Coast
186	Ballingall Islets Ecological Reserve	West Coast
187	Bamberton Park	West Coast
188	Bellhouse Park	West Coast
189	Boyle Point Park	West Coast
190	Broughton Archipelago Conservancy	West Coast
191	Burdwood Group Conservancy	West Coast
192	Burgoyne Bay Park	West Coast
193	Calvert Island Conservancy	Thompson Cariboo
194	Canoe Islets Ecological Reserve	West Coast
195	Cascade-Sutslem Conservancy	Thompson Cariboo
196	Cetan/Thurston Bay Conservancy	West Coast
197	Cleland Island Ecological Reserve	West Coast
198	Collinson Point Park	West Coast
199	Cranstown Point Conservancy	Thompson Cariboo
200	Dean River Corridor Conservancy	Thompson Cariboo
201	Dionisio Point Park	West Coast
202	Discovery Island Marine Park	West Coast
203	East Redonda Island Ecological Reserve	South Coast
204	Ellerslie-Roscoe Conservancy	Thompson Cariboo
205	Emily Lake Conservancy	Thompson Cariboo
206	Ethelda Bay - Tennant Island Conservancy	North Coast Skeena

Coastal BC Parks Protected Areas - With Marine Interface

207	Fillongley Park	West Coast
208	Forward Harbour/Yexeweyem Conservancy	West Coast
209	French Beach Park	West Coast
210	Gerald Island Park	West Coast
211	Gibson Marine Park	West Coast
212	Goose Bay Conservancy	Thompson Cariboo
213	Gunboat Harbour Conservancy	North Coast Skeena
214	Hardy Island Marine Park	South Coast
215	Henyemdzi Mekola/Yorke Island Conservancy	West Coast
216	Hotsprings-No Name Creek Conservancy	Thompson Cariboo
217	Hunwadi/Ahnuhati - Bald Conservancy	West Coast
218	Jaji7Em And Kw'ulh Marine Park [A.K.A. Sandy Island Marine Park]	West Coast
219	Jump Across Conservancy	Thompson Cariboo
220	Kin Beach Park	West Coast
221	Kitasoo Spirit Bear Conservancy	Thompson Cariboo
222	Kitty Coleman Beach Park	West Coast
223	K'lgaan/Klekane Conservancy	North Coast Skeena
224	Koeve Conservancy	Thompson Cariboo
225	K'ootz/Khutze Conservancy	North Coast Skeena
226	Kt'ii/Racey Conservancy	Thompson Cariboo
227	Lady Douglas - Don Peninsula Conservancy	Thompson Cariboo
228	Lasqueti Island Ecological Reserve	West Coast
229	Lepas Bay Ecological Reserve	West Coast
230	Lockhart-Gordon Conservancy	Thompson Cariboo
231	Main Lake Park	West Coast
232	Malaspina Park	South Coast
233	Maquinna Protected Area	West Coast
234	Megin River Ecological Reserve	West Coast
235	Moksgm'ol/Chapple - Cornwall Conservancy	North Coast Skeena
236	Mount Geoffrey Escarpment Park	West Coast
237	Mount Maxwell Ecological Reserve	West Coast
238	Mount Richardson Park	South Coast
239	Mount Tuam Ecological Reserve	West Coast
240	Namu Conservancy	Thompson Cariboo

Coastal BC Parks Protected Areas - With Marine Interface

241	Okeover Arm Park	South Coast
242	Outer Central Coast Islands Conservancy	Thompson Cariboo
243	Pa-aat Conservancy	North Coast Skeena
244	Penrose - Ripon Conservancy	Thompson Cariboo
245	Polkinghorne Islands Conservancy	West Coast
246	Pooley Conservancy	Thompson Cariboo
247	Porpoise Bay Park	South Coast
248	Q'altanaas/Aaltanhash Conservancy	North Coast Skeena
249	Qudes/Gillard-Jimmy Judd Island Conservancy	West Coast
250	Read Island Park	West Coast
251	Rescue Bay Conservancy	Thompson Cariboo
252	Restoration Bay Conservancy	Thompson Cariboo
253	Roberts Creek Park	South Coast
254	Roberts Memorial Park	West Coast
255	Rose Islets Ecological Reserve	West Coast
256	Rose Spit Ecological Reserve	West Coast
257	Ruckle Park	West Coast
258	Say Nuth Khaw Yum Park [A.K.A. Indian Arm Park]	South Coast
259	Sechelt Inlets Marine Park - Halfway Beach Site	South Coast
260	Sechelt Inlets Marine Park - Kunechin Point Site	South Coast
261	Sechelt Inlets Marine Park - Piper Point Site	South Coast
262	Sechelt Inlets Marine Park - Skaiaikos Point Site	South Coast
263	Sechelt Inlets Marine Park - Thornhill Site	South Coast
264	Sechelt Inlets Marine Park - Tzoonie Narrows Site	South Coast
265	Simson Park	South Coast
266	Sir Alexander Mackenzie Park	Thompson Cariboo
267	Skookumchuck Narrows Park	South Coast
268	Smithers Island Conservancy	Thompson Cariboo
269	Solander Island Ecological Reserve	West Coast
270	South Texada Island Park	South Coast
271	Squitty Bay Park	West Coast
272	Trial Islands Ecological Reserve	West Coast
273	Troup Passage Conservancy	Thompson Cariboo
274	Wahkash Point Conservancy	West Coast