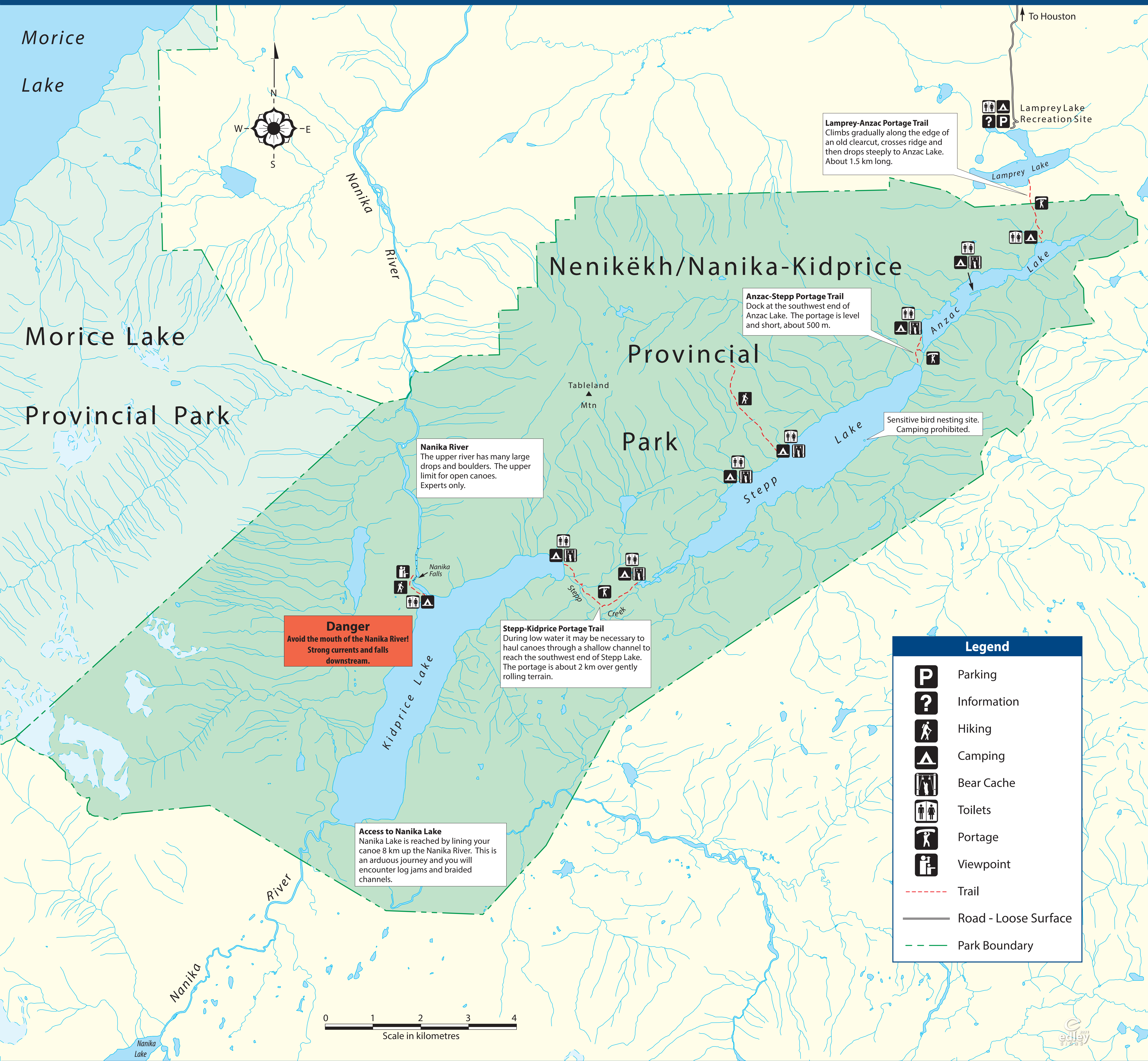


Nenikëkh/Nanika-Kidprice Provincial Park



This is a wilderness canoe route that often experiences strong southwest winds. Paddling in the early morning or early evening helps to avoid the winds. Stay close to shore if you do paddle in high winds.

There are no trash receptacles along the canoe route. Please pack out all garbage. Do not put garbage in outhouses as this may attract bears.

Bear caches are located at the campsites indicated on the map. **PLEASE NOTE:** It is necessary to bring along a length of rope to hoist your food.



Stepp Lake



Nanika Falls