

Category 0

- Healthy, no lesions, deformities, deflated appearance or missing arms



Category 1

- Lesions on 1 arm or body, or
- Twisted/unnatural appearance



Category 2

- Lesions on 2 arms or 1 arm and body, or
- Deteriorating arms, or
- Deflated appearance

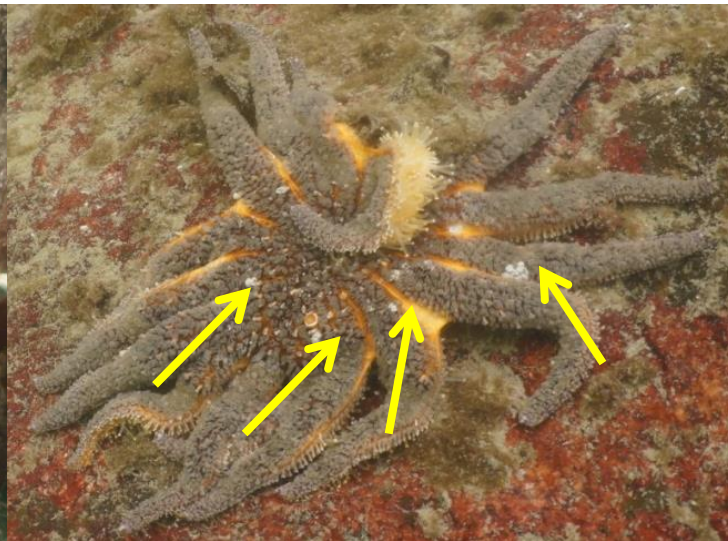
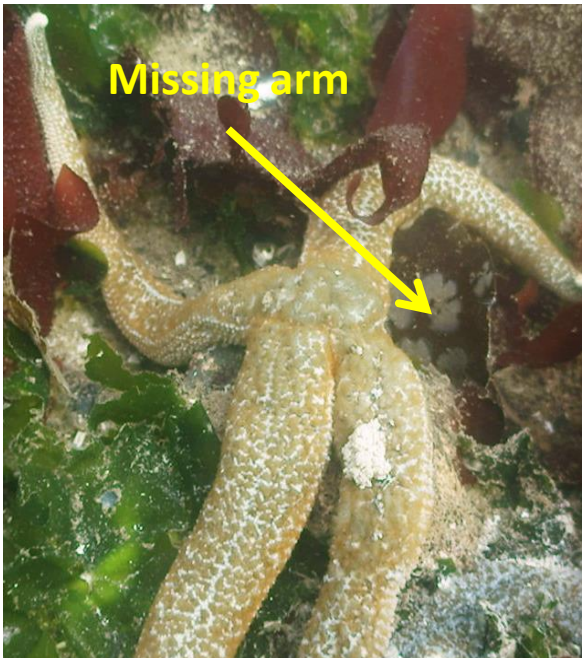


Deteriorating arm



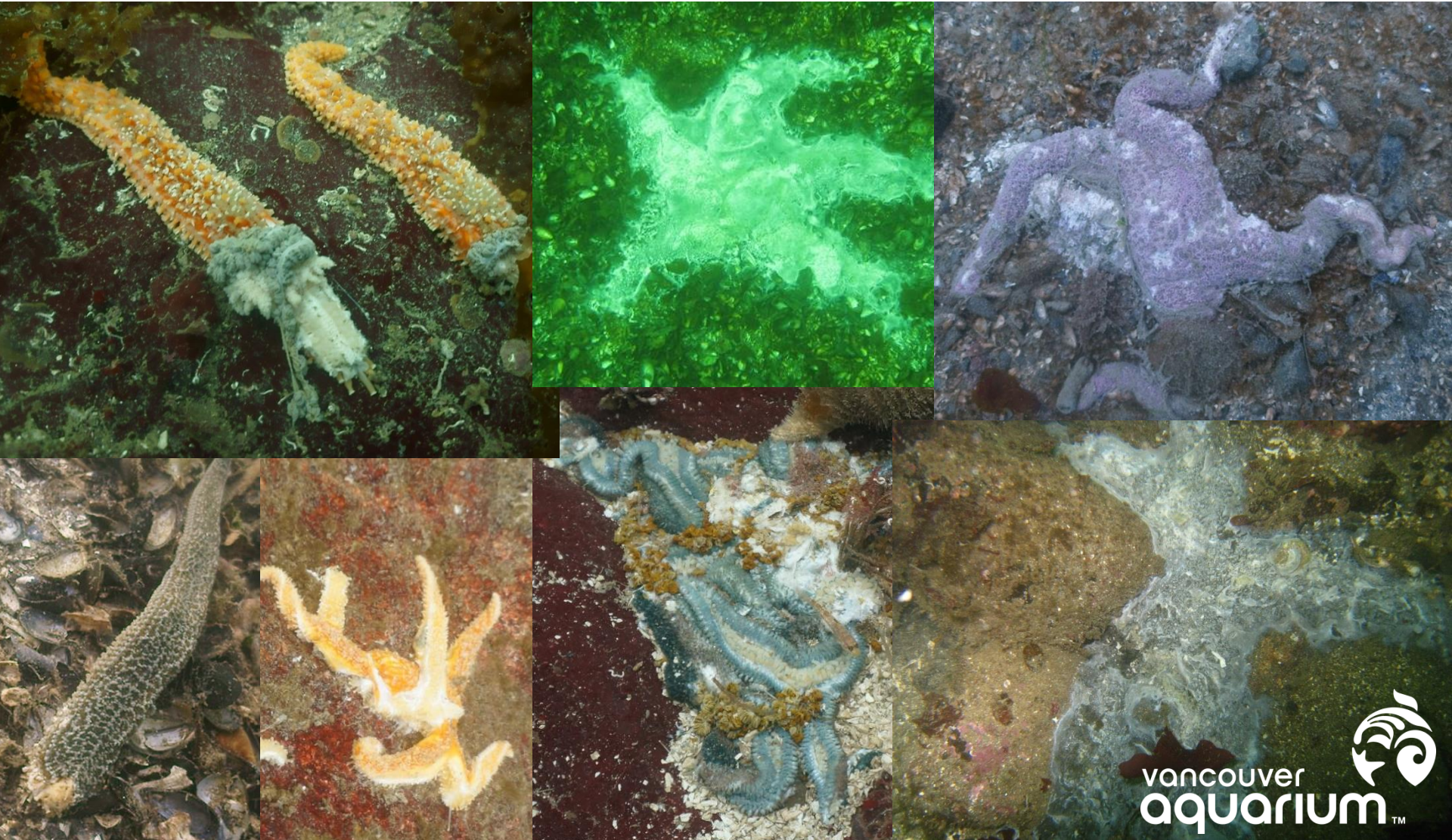
Category 3

- Lesions on most of body, or
- 1 or more missing arms, or
- Severely deflated or distorted appearance



Category 4

- Severe tissue deterioration
- Single arms
- Decaying tissue or “goo”



Category 5

- Newly settled juveniles (i.e “babies”)
- Loonie-sized or smaller



Photo by Neil McDaniel

