

MANAGEMENT DIRECTION STATEMENT

March, 2003

**for Adams Lake
Provincial Park
– Bush Creek Site**



**Ministry of Water, Land
and Air Protection
Environmental Stewardship
Division**

ADAMS LAKE PROVINCIAL PARK BUSH CREEK SITE

MANAGEMENT DIRECTION STATEMENT

March 2003

Approved by:



Monty Downs
Regional Manager, Thompson Region
Environmental Stewardship Division

Date: 03/03/28



Nancy Wilkin
Assistant Deputy Minister
Environmental Stewardship Division

Date: 03/03/31

Table of Contents

Introduction

Purpose of the Management Direction Statement	2
Context.....	2

Protected Area Attributes

Conservation	2
Recreation and Tourism.....	4
Cultural Heritage.....	4
Significance in the Protected Areas System	4

Land Uses, Tenures and Interests

Access	4
Tenures.....	4
Existing Land Use Activities and Facilities.....	4
Adjacent Patterns of Land Use	5
First Nations Interests	5
Other Agency Interests	5
Private and Public Stakeholder Interests.....	5

Protected Area Role Statement.....	5
---	----------

Management Commitments and Issues

Management Direction from Previous Planning.....	6
Management Issues	6

Management Direction

Priority Management Objectives and Strategies.....	7
Consultation and Future Planning.....	7
Zoning Plan.....	8

Figures

Context.....	3
Protected Area Zoning.....	9

Appendix I

Table of Acceptable Activities, Uses and Facilities for Adams Lake Park – Bush Creek Site	10
---	----

ADAMS LAKE PROVINCIAL PARK – BUSH CREEK SITE

MANAGEMENT DIRECTION STATEMENT

Introduction

Purpose of the Management Direction Statement

The purpose of this management direction statement (MDS) is to provide strategic management direction for Adams Lake Provincial Park – Bush Creek Site. An MDS does not necessarily negate the need for future, more detailed management plans. Management direction statements describe protected area values, management issues and concerns; a management strategy focused on immediate priority objectives and strategies; and directional statements from other planning processes. While strategies may be identified in the MDS, the completion of all these strategies is subject to funding and funding procedures. In addition, all development associated with these strategies within the park is subject to the BC Parks' Impact Assessment Policy.

Context

Adams Lake Provincial Park – Bush Creek Site is located at the southwest end of Adams Lake, approximately 25 kilometres north of Chase. The 100 hectare park is strategically located and the natural forested lake setting has the attributes to serve as the major public access and recreational destination on the provincially significant water body of Adams Lake. Adams Lake Park – Bush Creek Site will be the primary provincial park focus on Adams Lake and will provide a staging point for marine access to a number of other smaller park sites (Poplar Point, Spillman Beaches, Refuge Bay, Momich Lakes) on the lake.

The Bush Creek site was originally established in 1988 as a Recreation Area under the *Park Act*. Recreation Area status allowed for inclusion of mineral claims in the northern portion of the site. As follow up to the Kamloops Land and Resource Management Plan (LRMP) recommendations of 1996, the status of the larger portion of the Recreation Area, lying outside of the mineral claims, was upgraded to Class A park by inclusion in Schedule E of the *Park Act* in 1998. In 2000, the park was listed in Schedule C of the *Protected Areas of British Columbia Act* and renamed to Adams Lake Park – Bush Creek site.

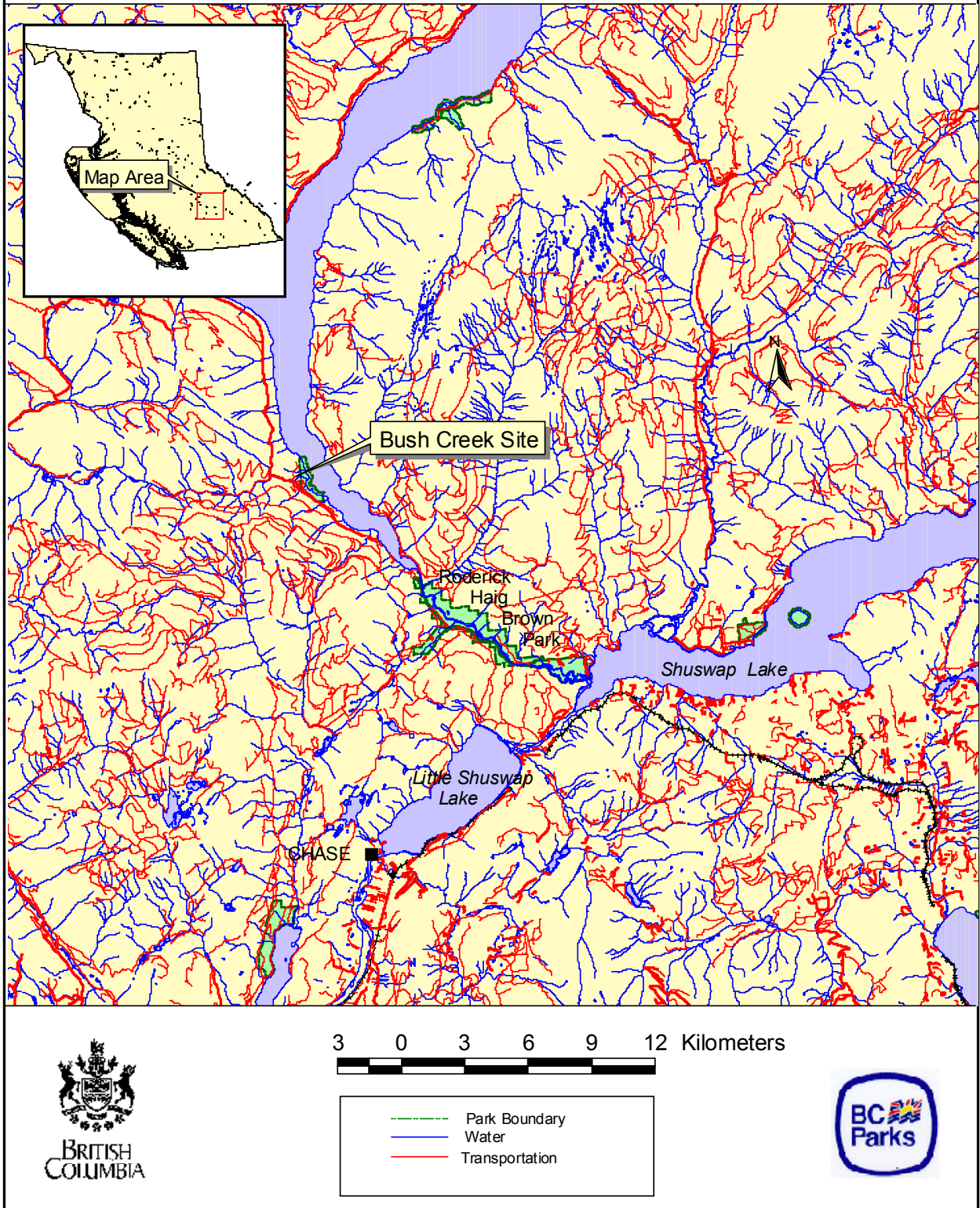
Protected Area Attributes

Conservation

- Small representative example of the IDFmw2 (Interior Douglas-fir moist wet) subzone/variant of the North Thompson Uplands Ecoregion. This subzone/variant is not well represented in other parks within this ecoregion or in other ecoregions. The park has been previously disturbed by logging and is mostly in second growth Douglas-fir, western red cedar, white birch and black cottonwood with some residual old growth specimens of Douglas-fir and red cedar.
- The terrain generally slopes at moderate gradient to narrow shoreline terraces and beaches.

Figure 1: Context

Adams Lake Park - Bush Creek Site



Recreation and Tourism

- 2,500 metres of beach frontage, with up to 30% classified as high quality sands and gravels. The best beaches occur in a broad arc around the Bush Creek delta and the sandy peninsula in the central portion of the park.
- Adams Lake is 60 kilometres long and averages 2.5 kilometres in width. The water is clear and of good quality, usually warming to a comfortable swimming temperature by early July.
- Quality natural setting with scenic panoramic views of Adams Lake and surrounding forested mountain slopes.
- Existing use relates to a rustic facility base – small, informal campground (approximately 32 campsites), pit toilets and boat launch. The mixed forested upland and lake frontage has potential for development of a 100 unit campground and associated day use and boat launch facilities.

Cultural Heritage

- The mouth of Bush Creek is a regionally significant archaeological site, featuring remains of a pithouse village on both sides of the creek, with 11 pithouses and 20 cache pits.

Significance in the Protected Areas System

- Conservation values and ecosystem representation are rated of low provincial significance. While the park is classified in a subzone variant (IDFmw2) which is poorly represented within the park system, the land base is small, the forest cover has been previously disturbed by logging, and all of the park is zoned for intensive recreation use.
- The archaeological site at the mouth of Bush Creek is of regional significance and merits protection.
- As the single major public access and recreational land base on Adams Lake, Adams Lake Provincial Park – Bush Creek Site has potential to serve as a provincially significant destination park in the Thompson Region. The demand for both day and overnight use is high in the Shuswap portion of the Region. The park would add significant attractions, providing diversity and complementing existing and nearby opportunities at Roderick Haig-Brown Park, Scotch Creek Park and Niskonlith Lake Park. The park forms a strategic point of access and facility base for use of the marine access park sites on Adams Lake (Spillman Beaches, Poplar Point, Refuge Bay).

Land Uses, Tenures and Interests

Access

The park is accessed by 15 km of paved and gravel road from Highway #1 at Squilax. The route follows the Holding/Adams Lake West Road off the Squilax-Anglemont Road. The last 5 kilometres into the park are on good gravel road.

Existing Tenures

- There are no known tenures or encumbrances in the park.

Existing Land Use Activities and Facilities

- This park offers 32 vehicle accessible campsites and rough boat launch. There are no day use facilities or formal beach area.
- The campground is heavily used during the summer and there is strong public demand for expanded camping facilities, and provision of picnicking, boat launch, parking and beach related day use opportunities.

Adjacent Patterns of Land Use

- A Girl Guide camp lies immediately south of the park.
- Mineral claims lie adjacent to northeast boundary of the park.
- Adams Lake road forms the western boundary of the park. This road is the main access along Adams Lake to Skwaam Bay and north, and is also used for log hauling.
- The surrounding lands are managed within the Niskonlith Provincial Forest.

First Nations Interests

- Regionally significant archaeological sites in the park.
- Adams Lake Band has expressed concerns over possible development of the park related to the larger surrounding land claim issues and to potential impacts to the archaeological values of the park.
- Development and management of the park will require ongoing consultation with local Indian Bands to incorporate First Nations interests.

Other Agency Interests

The park will be managed in close co-ordination with various resource agencies, particularly the Fish and Wildlife Science and Allocation Section of the Ministry of Water, Land and Air Protection, BC Fisheries and the Department of Fisheries and Oceans.

- fisheries managed by the Fish and Wildlife Science and Allocation Section
- salmonid species managed by Department of Fisheries and Oceans

Private and Public Stakeholder Interests

- Girl Guide camp uses the park for day use.

Protected Area Role Statement

Adams Lake Provincial Park – Bush Creek Site will serve as the single major public access and provincial park destination site on Adams Lake. The park has potential to fulfill a number of BC Parks' recreation goals, on both a provincial and regional basis, by providing facilities and services for:

- Destination campground for visitors to the Shuswap Lake/Adams Lake area. There is potential to develop a 100 unit campground in the park.
- Beach access and associated picnic and play areas.
- Boat launch and parking facility to allow for access and use of Adams Lake and the marine park system on the Adams Lake (Spillman Beaches, Poplar Point, Refuge Bay sites).
- The isolated beach and immediate upland at the extreme north end of the park will be managed for marine and walk-in access day use.
- Walking trails and nature appreciation.
- Interpretation of First Nations use of the site with specific reference to the features of the archaeological site.

The park's conservation role is relatively minor, with some representation of second growth Interior Cedar Hemlock forest.

The park has an important role in protecting a regionally significant archaeological site.

Management Commitments and Issues

Management Direction from Previous Planning

In recommending change of status from Recreation Area to Class A park, the Kamloops LRMP recognized the significance of the Adams Lake – Bush Creek Site for recreational access and use of Adams Lake. The LRMP assigned Natural Environment and Intensive Recreation zones for the park but did not identify the zone boundaries. The LRMP did not identify any issues or concerns other than that “no extra VQO [Visual Quality Objectives] constraints or restrictions on mineral exploitation in adjacent lands” would be imposed because of the park.

Management Issues

The following management issues have been identified:

Theme	Issue
Facility development	<ul style="list-style-type: none"> • Adams Lake Band has concerns relating to park development. A concept plan for development of the park was prepared in 1985, but First Nations concerns about potential impacts to archaeological values in the park has prevented moving ahead with facility improvements. Development of the park is considered of high priority in the Region, but cannot be undertaken until First Nations concerns and issues are resolved. Park development forms part of the much bigger issue involving First Nations land use interests and negotiations at Adams Lake and it may be some time before there is a resolution that allows the Environmental Stewardship Division to carry out facility improvements in the park.
Interim management	<ul style="list-style-type: none"> • Existing facilities and services are inadequate. The poorly designed layout of the existing facility base does not allow for full and proper public use and enjoyment of the site. Management of public use and site maintenance is also inefficient.
Protecting ecological values	<ul style="list-style-type: none"> • Inventory of flora and fauna is incomplete. • Recreational activities impact the park environments, particularly the shoreline, creek and associated riparian habitats.
Protecting cultural values	<ul style="list-style-type: none"> • Recreation use along the creek is potentially impacting the archaeological site. • Future development of the site will ensure that the archaeological site is not impacted.

Management Direction

Priority Management Objectives and Strategies:

Objective	Strategy
To protect the park's natural, recreational and cultural values.	<ul style="list-style-type: none"> • Continue long term monitoring of conditions and changes to park habitats with particular attention to the environs of Bush Creek and the lakeshore. Undertake mitigative measures as required. • Maintain strict controls on vehicle access. Vehicles are restricted to designated roads and parking surfaces. • Develop information to educate the public about the cultural/heritage values of the park. • Future development of the park will be predicated on a careful assessment of potential impacts to the environment and cultural values. • Monitor development on adjacent land; discuss potential mitigative measure with developers.
To provide for access and recreation use of Adams Lake Park. Recreational activities include camping, picnicking, swimming, boating, fishing and nature study.	<ul style="list-style-type: none"> • No substantial changes will be made to the facility base or management of public recreational use until the First Nations issues are resolved. Changes may be required for public safety and for protection of park values. In the interim, the park will continue to serve as a low profile campground and day use site. • Future improvement of facilities will include expansion of the campground to 100 sites, major day use area with parking and beach access, boat launch and parking, and interpretive facility aligned to the archaeological site on Bush Creek. Service levels will be to level 2 or 1 standards. Park development may be phased, depending on funding.
To provide base facility for access to Adams Lake marine park system.	<ul style="list-style-type: none"> • Future boat launch and parking area at Adams Lake Park will be designed with capacity for people to store vehicles and boat trailers.
To interpret the First Nations heritage use of the park, focussing on the archaeological site features.	<ul style="list-style-type: none"> • Work with First Nations (Adams Lake Band) to develop interpretive themes. Interpretive facilities could include partial reconstruction of the pit house village.

Consultation and Future Planning

Planning and management of the park will conform to the intent and directions as set forth in the province's Protected Areas Strategy. The Environmental Stewardship Division is accountable for planning, administration and management of the park through application of the laws, policies and regulations granted under the *Park Act*. The Environmental Stewardship Division will coordinate with

other agencies, the LRMP table, various public planning groups and First Nations in developing management plans for all of the new parks arising from the Kamloops LRMP.

This management direction statement has been reviewed and approved in principle by the Kamloops LRMP implementation team. A site design concept plan will be prepared prior to any major site development with input from user groups, local community representatives and First Nations.

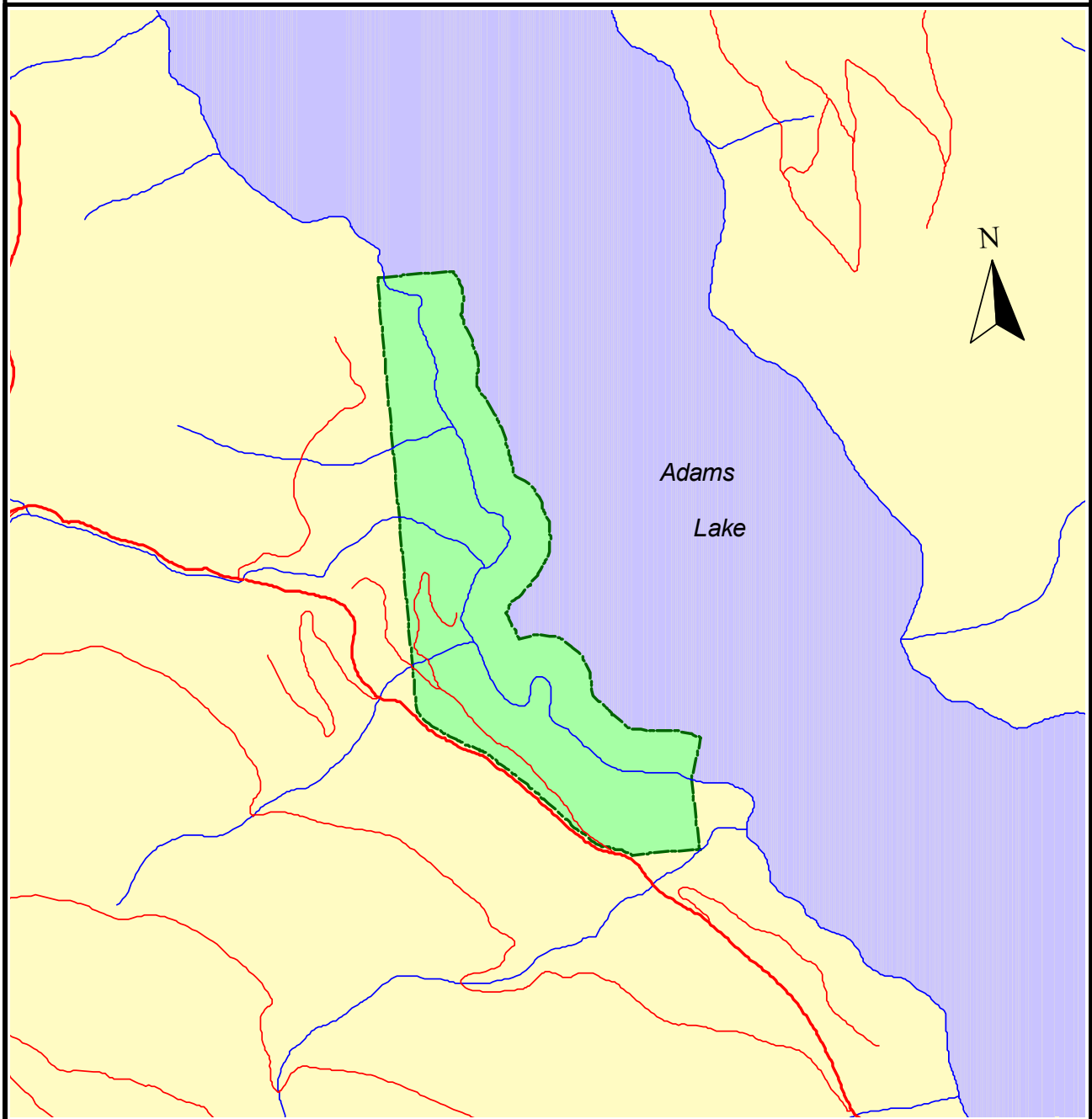
Zoning Plan

As defined under the guidelines and criteria of the provincial park zoning system, the park is zoned entirely Intensive Recreation:

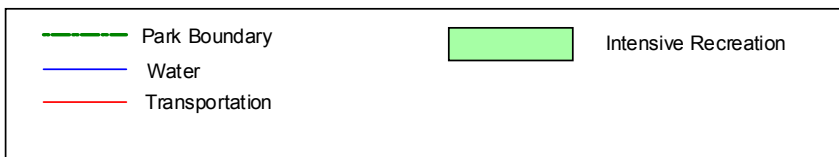
- **Intensive Recreation** – The whole of the park is zoned for intensive recreation use allowing for future expansion of campground and day use facilities. The archaeological site which is included in this zone will be managed to protect the features while allowing for interpretation. Both the south and north ends of the park will likely remain in a relatively natural condition, but these sites are too small to separate out from the Intensive Recreation zone.

Figure2: Park Zoning

Adams Lake Park - Bush Creek Site



0.4 0 0.4 0.8 Kilometers



Appendix I - Table of Acceptable Activities, Uses and Facilities for Adams Lake Park – Bush Creek Site

The following table provides a summary of acceptable uses, activities and facilities in the park.

Activity/Use/Facility	Acceptability
Aboriginal rights	Y
Hunting	N
Fishing	Y
Trapping	N2
Grazing (domestic livestock)	N/A
Recreational Gold Panning/Rock Hounding	N
Utility corridors	N
Communication Sites	N
Horse Use/ Pack Animals	N
Guide Outfitting (hunting)	N
Guide Outfitting (fishing)	M
Guide Outfitting (nature tours)	M
Guide Outfitting (river rafting)	N
Cat-Assisted Skiing	N/A
Ski Hills	N/A
Commercial Recreation (facility-based)	N
Commercial recreation (non-facility based)	M
Backcountry Huts	N/A
Water Control Structures	N
Fish Stocking and Enhancement	N1
Road Access	Y
Off-road Access (snowmobiling)	N
Off-road Access (motorized)	N
Off-road Access (mechanical activities)	M
Motorized Water Access	Y
Aircraft Access	y
Fire Management (suppression)	Y
Fire Management (prescribed fire management)	N
Fire Management (prevention)	Y
Forest Insect/Disease Control	M
Noxious Weed Control	M
Exotic Insect/Disease Control	M
Scientific Research (specimen collection)	M
Scientific Research (manipulative activities)	M

Y= allowed subject to conditions identified in the management direction statement or management plan
M= may be permitted if compatible with protected area objectives
N= not allowed
N1= allowed for expressed management purposes only
N2= present and allowed to continue but not normally allowed