

**PURPOSE  
STATEMENT  
AND ZONING PLAN**

February 2007

for Brent Mountain  
Protected Area




Ministry of Environment,  
Environmental Stewardship  
Division



## Brent Mountain Protected Area

# Purpose Statement and Zoning Plan

Approved by:



---

Drew Carmichael  
Regional Manager  
Environmental Stewardship Division

Date: Feb. 15, 2007



---

Nancy Wilkin  
Assistant Deputy Minister  
Environmental Stewardship Division

Date: March 8, 2007



# Brent Mountain Protected Area Purpose Statement and Zoning Plan

## Background Summary

The 4,344 hectare Brent Mountain Protected Area is located about 34 km west of Penticton.

The main trailhead is located at a parking lot off Shatford Creek Forest Service Road. The protected area can also be reached by trail on its northwest, east and south sides. Most trailheads are at the 5,000 foot or higher elevation, making the alpine area readily accessible.

Brent Mountain is noted for its varied and rich sub-alpine and alpine flora. Known for its attractive hiking, Brent Mountain offers spectacular views of the Cascade and Coast Mountains to the west, to the Selkirks in the east and glimpses of Okanagan Lake below. A former fire lookout is located on the peak. Lack of reliable water sources limits camping opportunities. Winter use includes cross-country skiing and snowmobiling. Much of the winter use originates from Apex Mountain Resort 12.5 km to the south.

Soil conditions, varying slopes, exposures and possible status as a refugium during the last ice age combined with rainfall and snow carry-over sometimes as late as mid-July, create a flora richer than Apex, Little White and Big White mountains. Brent Mountain supports a number of plant species and associations including dwarf lewisia (*Lewisia pygmaea*) and bittercress (*Cardamine oligosperma*). It provides habitat for white-tailed ptarmigan, red crossbills, white crossbills, boreal chickadees, northern goshawk, red-tailed hawk, fox sparrow, Clark's nutcrackers, golden eagles, pine martens, fishers (blue-listed) and hoary marmots. As with some other mountain tops in the area, lady bugs over-winter under the rocks at Brent Mountain.

The protected area is part of two cattle grazing tenures managed by the Ministry of Forests and Range. Timing of cattle grazing in the protected area is from August 1 to September 30. A portion of two guide outfitter areas cover the protected area. Both are under Park Use Permit.

## Primary Role

The protected area protects an expanse of sub-alpine and alpine environments representative of landscape conditions of the Thompson Plateau. Features include subalpine parkland and meadows, wetlands along stream channels and wet meadows at high elevation. No known red/ blue-listed species occur in the protected area.

## Secondary Role

Brent Mountain provides a range of outdoor recreation opportunities, including nature appreciation, hiking, photography, horseback riding, mountain-biking, hunting, cross-country-skiing and snowmobiling.

## Protected Area Values and Significance Summary Matrix

### Conservation:

#### Representation

##### Ecosection

- Okanagan Range - contributes 6.36% to the protected areas system representation of this well – represented ecosection (14.17% protected).

##### Biogeoclimatic subzone/variant

- ESSFxc1 - moderate contribution (7.34 %) to the protected areas system representation of this subzone/variant. This subzone/variant is well represented (41.4%) in the protected areas system.

ESSFxcp- minimal (1.94% ) contribution to province-wide protected area in protected areas system representation of this subzone/variant. This subzone/variant is well represented (64.7%) in the protected areas system.

ESSFxcw- contributes 13.7 % to the protected areas system representation of this subzone/variant. This subzone/variant is well represented (48.7%) in the protected areas system.

MSdm2- small contribution (0.68%) to the protected areas system representation of this subzone/variant. This subzone/variant is poorly represented (3.2%) in the protected areas system.

MSxk1- contributes 4.1 % of protected areas system representation of this subzone/variant. This subzone/variant is moderately represented (6.7 %) in the protected areas system.

##### Special Features

- Rich flora that results from unique

combination of soil, slope, rainfall, snow cover and glacial refugia.

Rare/Endangered Values

Fisher (blue-listed) habitat

Scientific/Research Opportunities

Monitoring alpine communities for climate change and identification of potential refugia.

**Recreation:**

Representation

Backcountry

Regionally important sub-alpine/alpine hiking experience.

Destination

Travel corridor

Local recreation

Hiking, bird-watching, photography, cross-country skiing and snowmobiling.

Special Opportunities

Education/Interpretation Opportunities

**Cultural Heritage:**

Representation

Special Feature

**Other Management Considerations:**

Other Designations

Relationship to Other Protected Areas

Collaborative Management Arrangements

Partnerships

Vulnerability

Relationship to Other Strategies  Identified for protected status through the Okanagan-Shuswap Land and Resource Management Plan, approved in 2001.



**Area**

4,344 hectares

**Date of establishment**

April 18, 2001

**Management Issues**

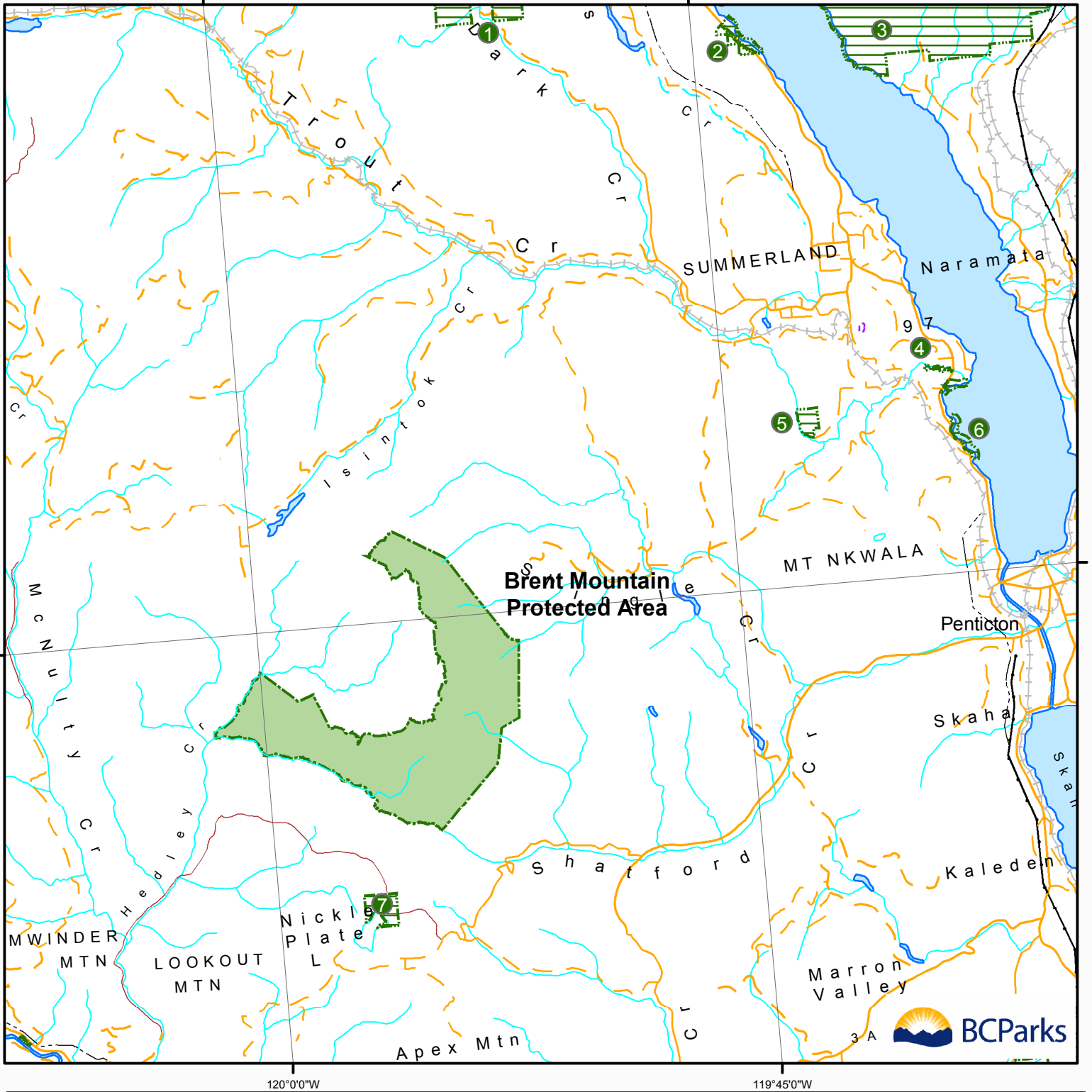
<b>Known Management Issues</b>	<b>Response</b>
Trail erosion and braiding in boggy areas	<ul style="list-style-type: none"> <li>• Review and rehabilitate where required. Measures could include stabilization of eroded areas or trail relocation to avoid boggy areas.</li> <li>• Improve information signage to increase public awareness of, and cooperation with, management actions.</li> </ul>
ATV (motorcycle) use negatively impacts ecological values and the recreational experience of other users.	<ul style="list-style-type: none"> <li>• The protected area is closed to ATVs.</li> <li>• Discourage such use by working with local ATV groups to increase awareness of the values in the protected area. Measures may include signage, periodic enforcement blitzes and enlisting the help of other groups to act as stewards for the area.</li> </ul>
Off-trail mountain bike use damages ecological values.	<ul style="list-style-type: none"> <li>• Increase awareness and the cooperation of mountain bike users through contact with local clubs, signage and erection of barriers in sensitive areas where necessary.</li> </ul>
Some snowmobile use occurs at times of low snow pack. This damages fragile alpine vegetation.	<ul style="list-style-type: none"> <li>• Monitor the situation. Develop partnerships with local snowmobile groups to increase awareness. Use signage to discourage snowmobiling when snow-pack is insufficient to protect vegetation. Consider a strategy to open/close the park based on snow depth.</li> </ul>
Adjacent logging activity has affected cattle distribution and management in the protected area.	<ul style="list-style-type: none"> <li>• Work with the Ministry of Forests and Range on the installation of new drift fencing to control the distribution of cattle. Monitor the timing and level of cattle use, particularly in wet areas.</li> </ul>


## Zoning

The entire protected area is zoned Nature Recreation to protect scenic values and to provide for backcountry recreation opportunities in a largely undisturbed natural environment.

**Figure 1: Regional Context**

**Brent Mountain Protected Area**





Produced in February 2007 for  
Ministry of Environment  
by Ministry of Agriculture and Lands  
Integrated Land Management Bureau

**Legend**

- Brent Mountain Protected Area
- Other Protected Areas
- Highway
- Road

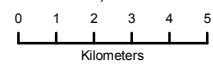
**Other Provincial Protected Areas**

- ① Darke Lake Park
- ② Okanagan Lake Park
- ③ Okanagan Mountain Park
- ④ Sun-Oka Beach Park
- ⑤ Trout Creek Ecological Reserve
- ⑥ Kickinnee Park
- ⑦ Nickle Plate Park

Projection: UTM Zone 11  
Datum: NAD83

This is a visual representation  
only and should not be used for  
legal purposes

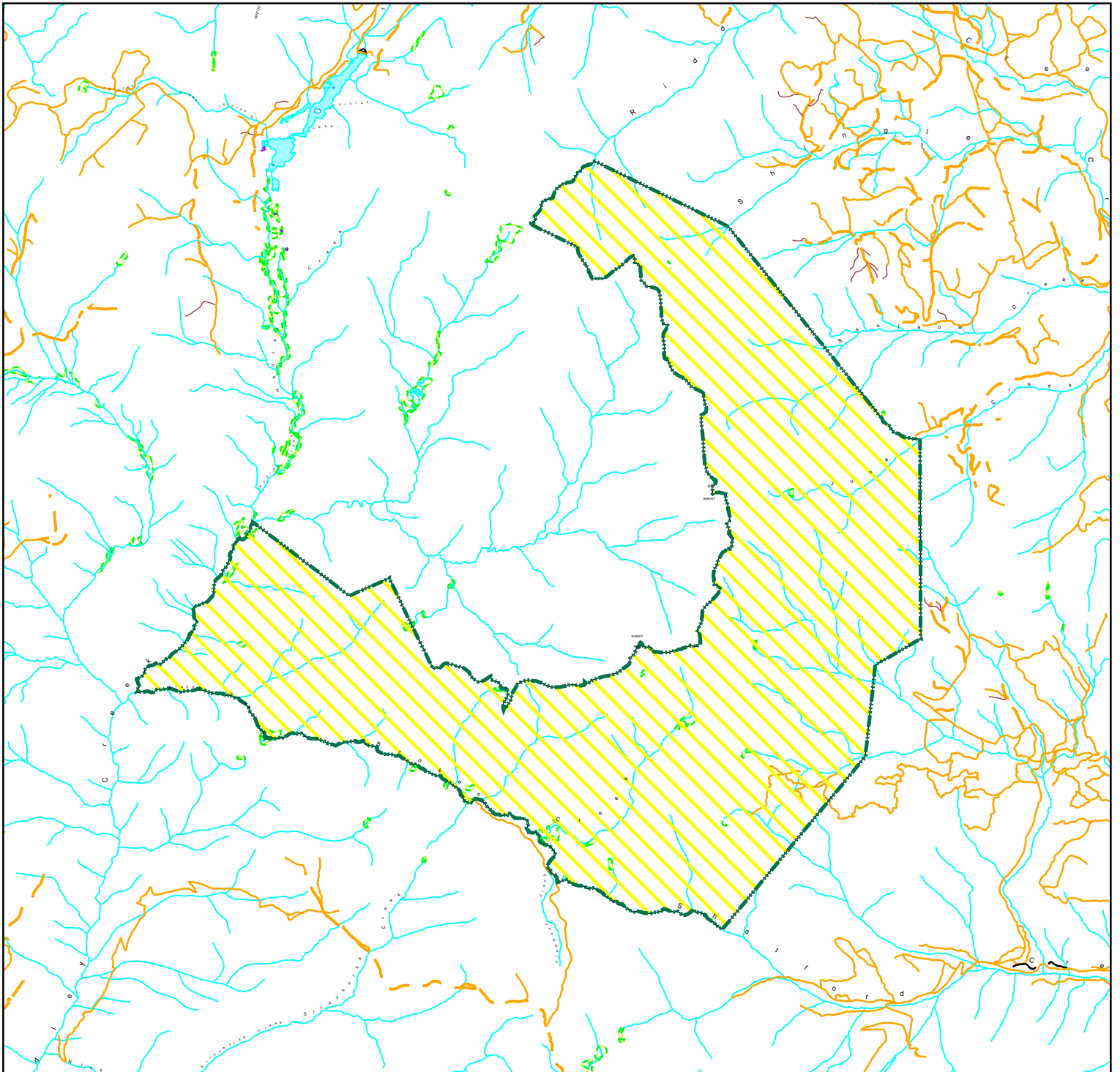
1:200,000



0 1 2 3 4 5  
Kilometers

# Zoning Map

# Brent Mountain Protected Area



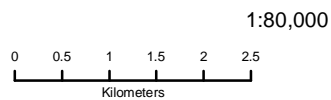
BRITISH COLUMBIA



Nature Recreation



Produced in Sept 2006 for  
Ministry of Environment  
by Ministry of Agriculture and Lands  
Integrated Land Management Bureau



Projection: UTM Zone 11  
Datum: NAD83

This is a visual representation  
only and should not be used for  
legal purposes