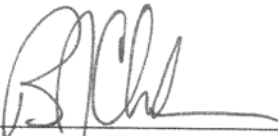


CLENDINNING PROVINCIAL PARK

PURPOSE STATEMENT AND ZONING PLAN

March 2003

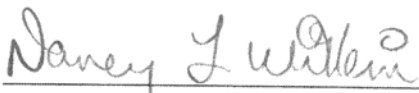
Approved by:



Brian Clark
Regional Manager
Environmental Stewardship Division

March 13/03

Date:



Nancy Wilkin
Assistant Deputy Minister
Environmental Stewardship Division

March 23/03

Date:

Clendinning Provincial Park Purpose Statement and Zoning Plan

Primary Role

The **primary role** of Clendinning Provincial Park is the protection of natural values, particularly wildlife and old-growth forests. Clendinning Park is a relatively large, undisturbed valley that supports wildlife populations that depend on undisturbed habitat with little human presence, such as mountain goat, grizzly bear and wolverine. It is also home to a small population of coastal moose, as well as deer, black bear, and other species. At lower elevations of the park, superb old-growth Douglas-fir and cedar forests grow along the Elaho River floodplain.

Secondary Role

The **secondary role** is the opportunity for wilderness recreation in a remote setting. Granite peaks at the north end of the park create a high-quality mountaineering experience. Further opportunities may exist in the southern end of the park for an interpretive trail through coastal old-growth forest.

Known Management Issues	Response
Currently, access to this park is primarily by helicopter. Park visitation is currently low, but increased levels of motorized activity, such as helicopter and snowmobile access, may impact on wildlife.	Determine degree of impact of mechanized activity on wildlife. Management direction for mechanized activity will be determined through the Management Direction Statement process with stakeholder group, currently in progress.
The Elaho Valley is a high profile location for public interest in old-growth forests. Public access into the park's forested areas must be designed in a way that ensures the protection of the old growth values and the wildlife populations it supports.	Limit trail to location designed to minimize impact on forest and wildlife values while providing access to a quality hiking and viewing opportunity.
Management of park values would benefit from a more detailed analysis of values and management direction found in a Management Direction Statement.	In December 2002, the Environmental Stewardship Division initiated a Management Direction Statement process with stakeholder involvement. To be completed in late-2003.

Zoning

Natural Environment – This zone will include the upper elevation area and will protect natural values found within the zone while allowing low levels of recreational use and limited facility development. Final zoning for this area will be determined with stakeholders through the current Management Direction Statement process.

Special Feature – This zone is located along the Elaho River and will protect magnificent examples of coastal old-growth forest, with some Douglas-fir trees estimated to be more than 1,000 years old. Many ancient red cedar are also found in the area. This is on the northern edge of the range of large coastal Douglas-fir.

Conservation

- Representation
- ecosection Eastern Pacific Ranges – significant contribution (11%) to this well represented (18%) ecosection. Northern Pacific Ranges – moderate contribution (3.7%) to this under-represented (1.7%) ecosection.
- biogeoclimatic subzone/variant All 4 of the subzones [AT unp; CWH ds1; CWH ms1; MH mm2] within the park are adequately represented. Clendinning makes significant contributions to the CWH ds1 (10.5%) and CWH ms1 (8.92%).
- Special Feature Excellent example of old-growth forest including 1000+ year old trees in the northern range of coastal Douglas fir.
- Rare/Endangered Values
- Scientific/Research Opportunities Floodplain old-growth features, northern range of large coastal Douglas-fir.

Recreation

- Representation
backcountry High quality backcountry wilderness.
destination
travel corridor
local recreation
- Special Opportunities
- Education/Interpretation Opportunities Public access to old-growth forest should be combined with an interpretive/educational purpose.

Cultural Heritage

- Representation Specific features unknown, but evidence from adjacent areas indicates historical use by First Nations. The Squamish Nation Land Use Plan identifies “Wild Spirit Places” adjacent to Clendinning Park, indicating the significance of the area to them.
- Special Feature

Other Management Considerations

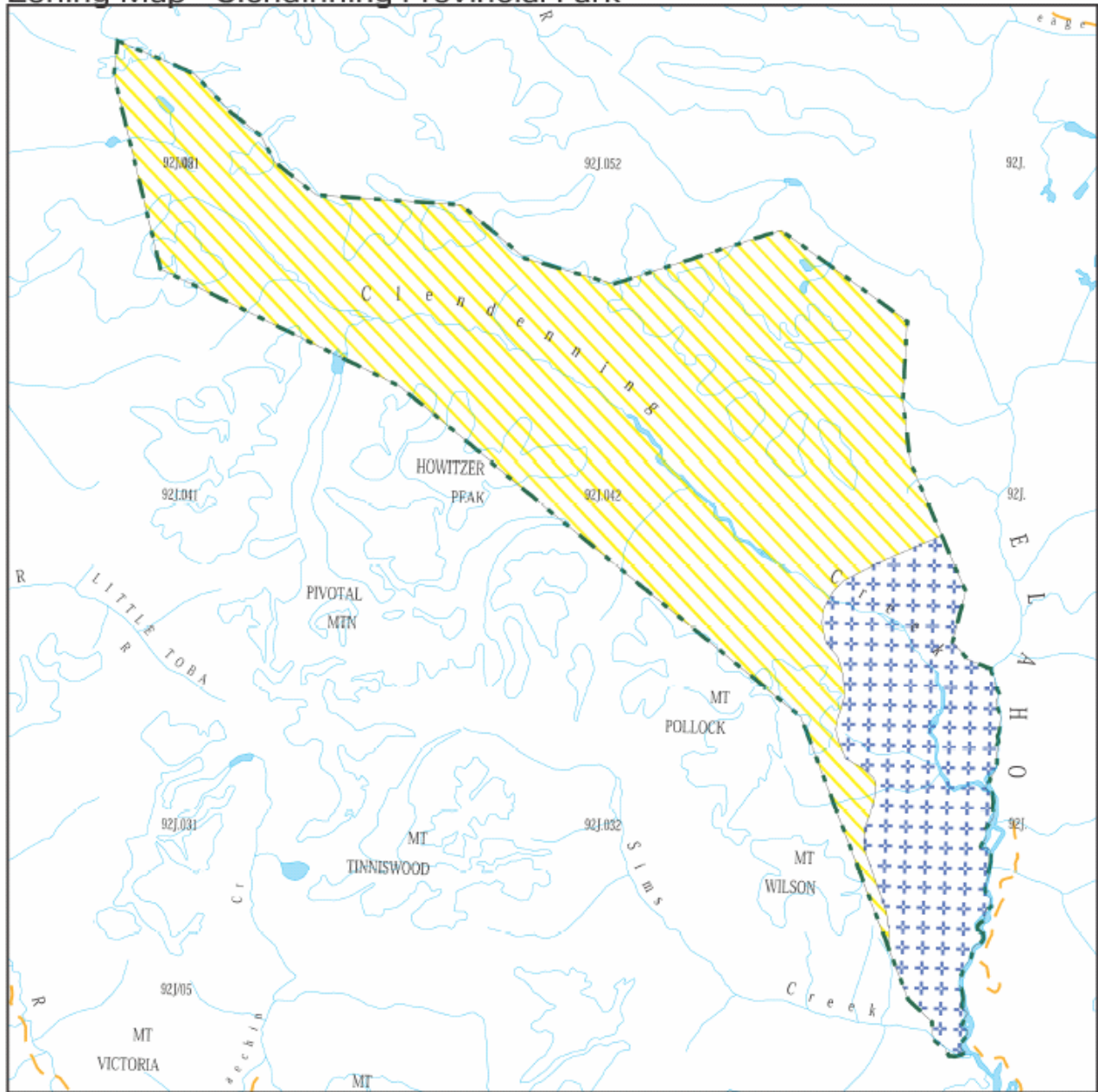
- Other Designations
- Relationship to other PAs
- Co-operative Management

- Arrangements
- Partnerships
- Vulnerability
- Relationship to other Strategies Lower Mainland PAS; Sea to Sky LRMP's "Backcountry Winter Recreation Forum"

Area: 30,330 hectares

Date of Establishment: December 9, 1998

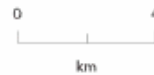
Zoning Map - Clendinning Provincial Park



Projection: Albers Equal Areas
Datum: NAD83



-  Natural Environment
-  Special Feature
-  Protected Area Boundary



Produced in Mar 2003 for
Ministry of Water, Land and Air
Protection by MSRM, Decision
Support Services

This is a visual representation
only and should not be used for
legal purposes.