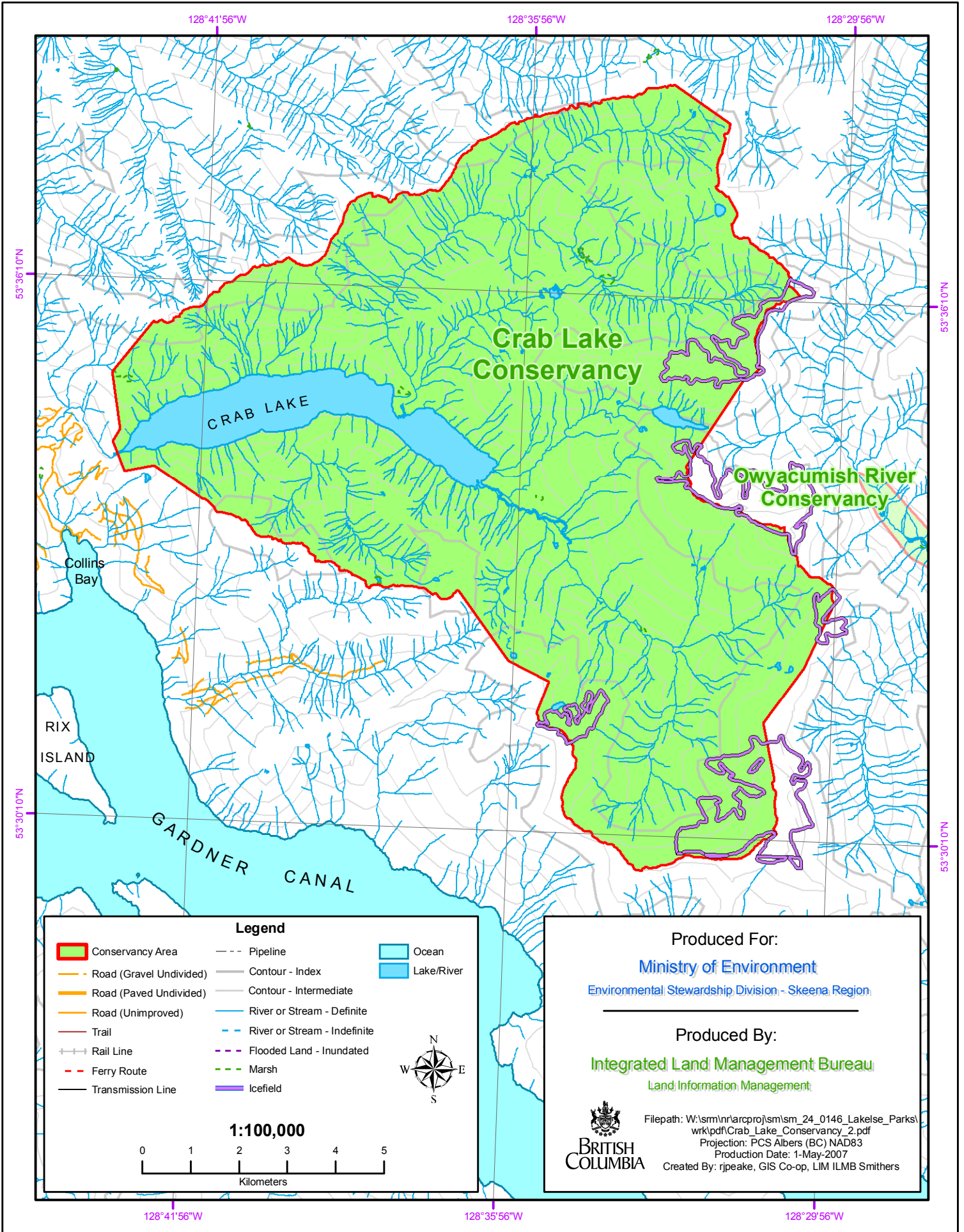


Crab Lake Conservancy



128°41'56"W

128°35'56"W

128°29'56"W

53°36'10"N

53°36'10"N

53°30'10"N

53°30'10"N

128°41'56"W

128°35'56"W

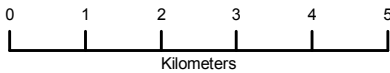
128°29'56"W

Legend

- | | | |
|-------------------------|------------------------------|------------|
| Conservancy Area | Pipeline | Ocean |
| Road (Gravel Undivided) | Contour - Index | Lake/River |
| Road (Paved Undivided) | Contour - Intermediate | |
| Road (Unimproved) | River or Stream - Definite | |
| Trail | River or Stream - Indefinite | |
| Rail Line | Flooded Land - Inundated | |
| Ferry Route | Marsh | |
| Transmission Line | Icefield | |



1:100,000



Produced For:

Ministry of Environment

Environmental Stewardship Division - Skeena Region

Produced By:

Integrated Land Management Bureau

Land Information Management



Filepath: W:\sm\in\arcproj\sm\sm_24_0146_Lakelse_Parks\wk\pdf\Crab_Lake_Conservancy_2.pdf
 Projection: PCS Albers (BC) NAD83
 Production Date: 1-May-2007
 Created By: rjpeake, GIS Co-op, LIM ILMB Smithers