

# CROOKED RIVER PROVINCIAL PARK

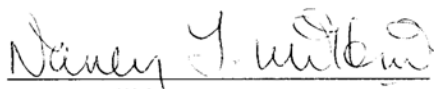
## PURPOSE STATEMENT AND ZONING PLAN

December 2002

Approved by:

  
John Metcalfe  
Regional Manager  
Environmental Stewardship Division

Date: Dec 19, 2002

  
Nancy Wilkin  
Assistant Deputy Minister  
Environmental Stewardship Division

Date: February 12, 2003

## CROOKED RIVER PROVINCIAL PARK

Crooked River Provincial Park is located 70 km north of Prince George, alongside Highway 97. The park is 970 ha in size and has long been a popular destination for area residents.

Crooked River Provincial Park lies within the Fraser Basin, an irregularly-shaped basin of hills and shallow lakes covering much of North Central British Columbia. The gently rolling landscape is covered by a thick layer of glacial till. Three beautiful lakes are contained within the park. The fine, sandy beaches are some of the best in the region and are favourites for swimmers and sunbathers.

### Primary Role

The primary role is to provide a regional family destination for camping, swimming and fishing opportunities and for Highway 97 travellers.

For swimmers and sunbathers, the 460 metres of natural sandy beach of Bear Lake is the main attraction. The pristine setting is safe and quiet since power boats are not permitted in the park. Nearby change houses and picnic tables make it easy to spend a full day enjoying this natural playground.

Skeleton, Hart and Square lakes also offer water-oriented recreation opportunities. Fishing can be quite productive in Hart and Square lakes and in the river. The most sought-after species are rainbow and brook trout, Dolly Varden, arctic grayling and Rocky Mountain whitefish.

A 90 unit campground is located along the lakeshore, nestled within a pine forest.

There are two main trails, each of which takes about an hour for a round trip. One goes from the campground over to and around Square Lake, an excellent spot for nature viewing. The other overlooks the willow-fringed Crooked River, the park's namesake.

### Secondary Role

The secondary role is to provide a small area of representation of the Nechako Lowlands Ecoregion. The park consists largely of a glacial sand dune complex which is regional uncommon. Livingstone Springs, along the Crooked River, provides a wintering area for trumpeter swans and moose. It is also one of few groundwater springs in the area and provides a good water source for the downstream fishery.

Known Management Issues	Response
Hart Lake Rainbow Trout Fishery	Manage for high catch success of larger size fish. Monitor use and the effects of the regulation on this fishery from anglers. Conduct creel surveys every five years, unless otherwise warranted. Determine fish guiding capability – 3 PUP's currently in place.
Railway and Highway Spill Potential	Develop a Spill Contingency Plan.

Forest Health	Monitor and assess mountain pine beetle on an annual basis. Include Crooked River in District Mountain Pine Beetle Strategy.
Invasive Species	Monitor highway and railway for species introduction.
Sand Dune Complex & Livingston Springs (Swan Wintering Area)	Monitor use and impacts and step up enforcement measures if needed. Monitor an apparent change in water level at Livingstone Springs. Increase awareness through interpretation and extension services.
Campground Vegetation Restoration	Initiate campsite vegetation restoration program.
Management Planning	Need to resolve acceptable uses which were deferred from the LRMP table

## **Zoning**

Crooked River Park includes two zones:

- Intensive Recreation (provision of a variety of readily accessible, facility-oriented outdoor recreation opportunities) in the day use and campground area (approximately 221 ha or 23% of park).
- Natural Environment (protection of scenic values and provision of backcountry recreation opportunities in largely undisturbed natural environment) for the remainder of the park (approximately 749 ha or 77% of park).

## CONSERVATION

### Representation

- ecosection
- biogeoclimatic subzone/variant

X Nechako Lowland (NEL). 4.68% of this ecosection is protected. Crooked River contributes 1.4% to the overall representation of this ecosection

X SBSmk1 – 2.38% protected. Crooked River contributes 2.82% of the overall representation of this ecosystem

### Special Feature

X Glacial sand dune complex and wintering area for trumpeter swans.

### Rare/Endangered Values

Unknown

### Scientific/Research Opportunities

X Monitor Hart Lake for apparent decrease in whitefish population

## RECREATION

### Representation:

- backcountry
- destination
- travel corridor
- local recreation

X Regional destination for family oriented camping opportunities.

X Campground and day use area for visitors traveling north to the Alaska Highway.

X Popular local area for Prince George residents.

### Special Opportunities

### Education/Interpretation Opportunities

## CULTURAL HERITAGE

### Representation

Unknown

### Special Feature

X Use of Crooked River by Alexander Mackenzie and Simon Fraser.

## OTHER MANAGEMENT CONSIDERATIONS

### Other Designations

X At some time in the future, the parcel of land located to the west of L2960 should be considered for addition to Crooked River. The only reason this did not occur at the Prince George LRMP, was because the elderly owner of L2960 “liked things the way they were”.

### Relationship to Other PAs

X Carp Lake and Whiskers Point Campgrounds are located

farther north along Hwy 97. West Lake and Eskers also provide day use opportunities for Prince George residents.

**Co-operative Management Arrangements**

**Partnerships**

**Vulnerability**

Vegetation immediately surrounding the campgrounds has been significantly impacted by vehicles and trailers being parked off the camping pads. There is forest harvesting activity adjacent to the park. The Conservation Risk Assessment Process identified 2 risk factors (the shape and the size of the park) for the park and rated them as low significance. Six stressors/threats were identified for the park: aircraft/potential was rated as highly significant; campground and forest harvesting activity were rated as moderately significant; roadways, railways and suburban expansion were all rated as low significance.

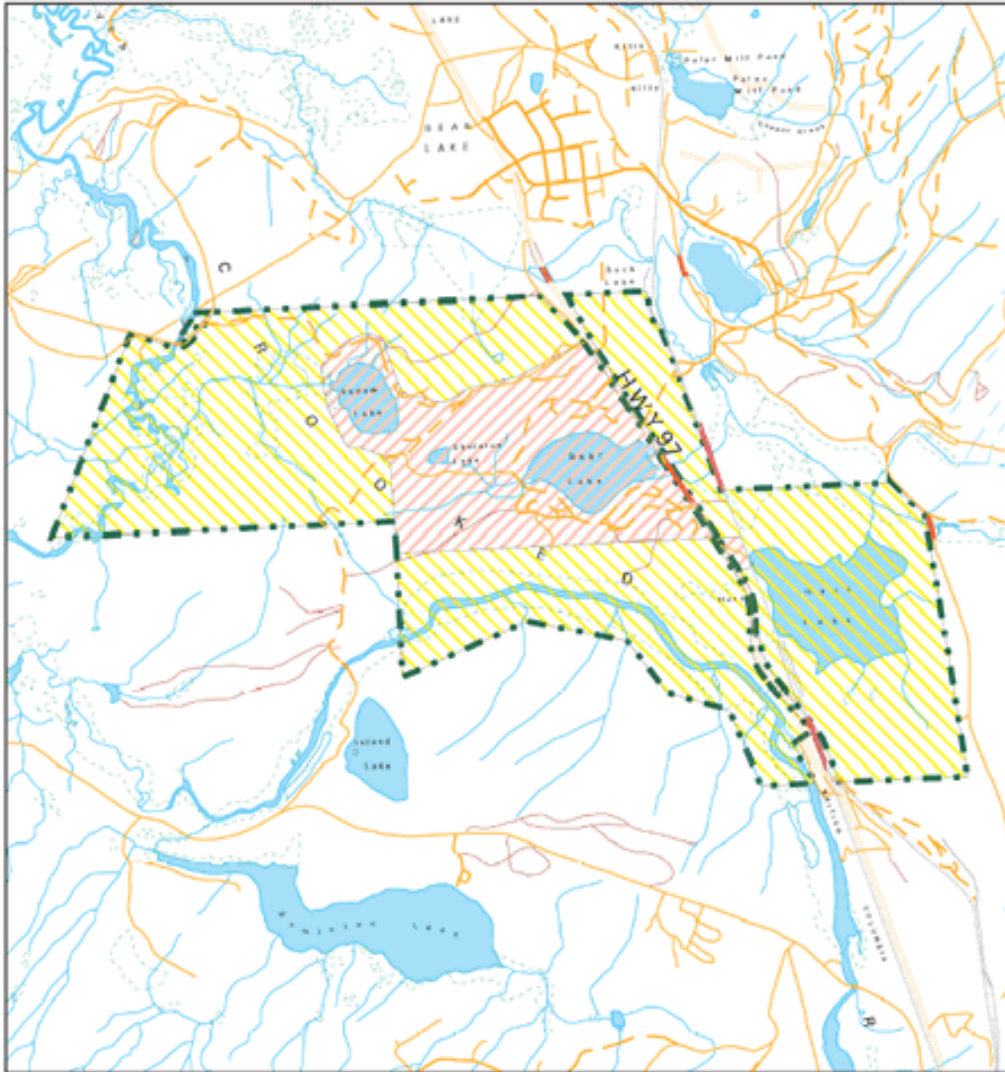
**Relationship to Other Strategies**

X Crooked River was originally established in 1965 for recreational purposes. 50 ha was added to the park to protect Livingstone Springs and a section of the Crooked River as a result of the Prince George LRMP.

**Area:** 970 hectares

**Date of establishment:** Originally established on October 5, 1965. 50 hectares added to the park on June 29, 2000 following recommendations from the Prince George LRMP.

# Zoning Map - Crooked River Provincial Park



Projection: Albers Equal Areas  
Datum: NAD83



-  Intensive Recreation
-  Natural Environment
-  Protected Area Boundary



Produced in Jan 2003 for  
Ministry of Water, Land and Air  
Protection by M3RM, DeLuxe  
Support Services

This is a visual representation  
only and should not be used for  
legal purposes.