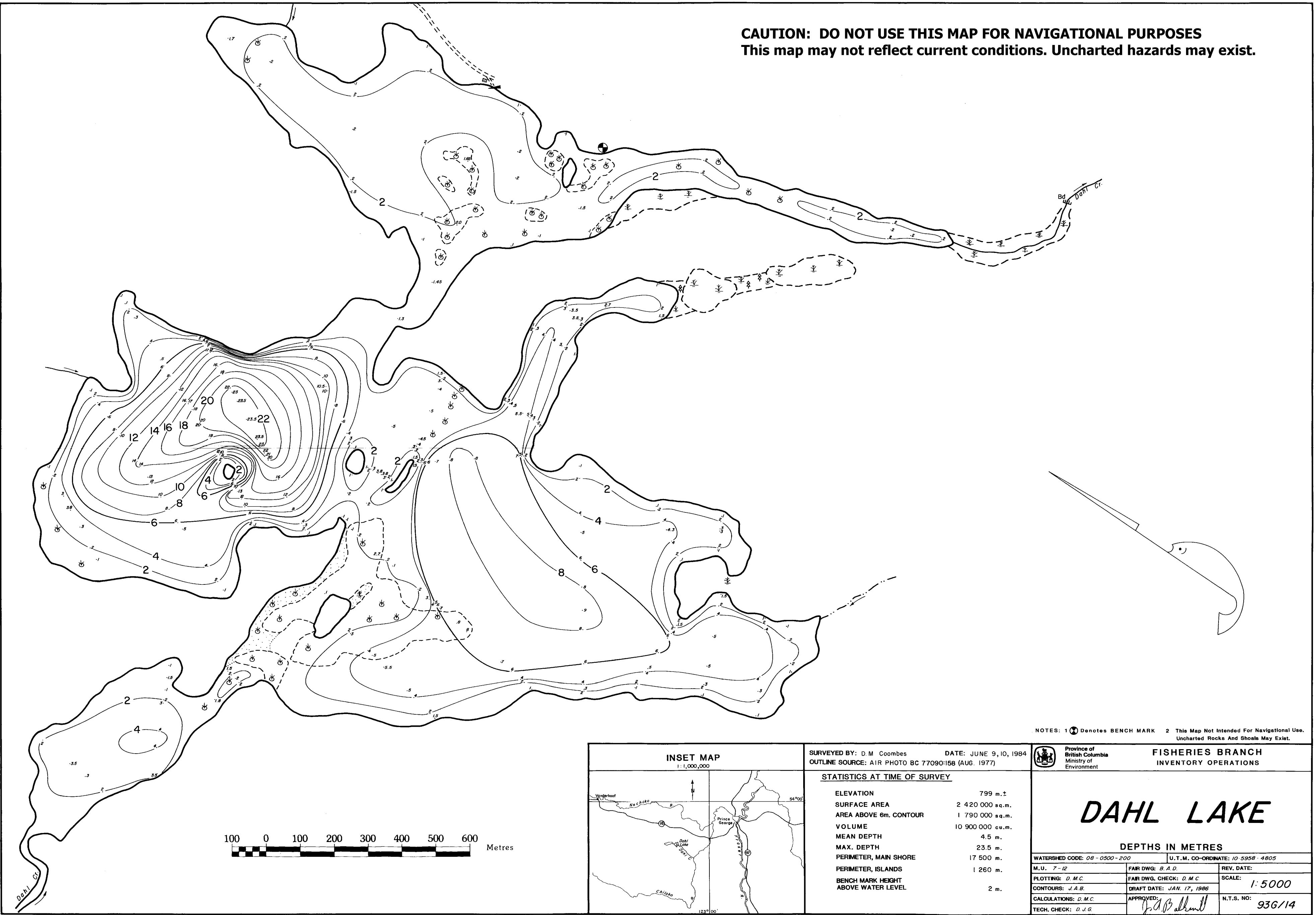
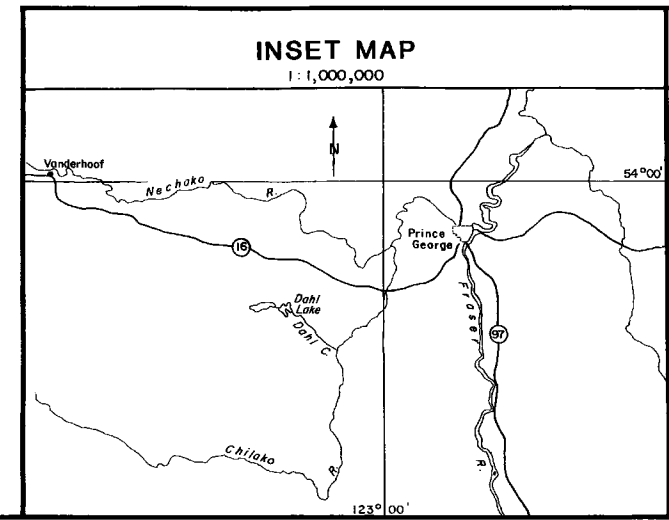


CAUTION: DO NOT USE THIS MAP FOR NAVIGATIONAL PURPOSES
 This map may not reflect current conditions. Uncharted hazards may exist.



NOTES: 1 (⊕) Denotes BENCH MARK 2 This Map Not Intended For Navigational Use. Uncharted Rocks And Shoals May Exist.



SURVEYED BY: D.M. Coombes		DATE: JUNE 9, 10, 1984	
OUTLINE SOURCE: AIR PHOTO BC 77090:158 (AUG. 1977)			
STATISTICS AT TIME OF SURVEY			
ELEVATION	799 m.±		
SURFACE AREA	2 420 000 sq.m.		
AREA ABOVE 6m. CONTOUR	1 790 000 sq.m.		
VOLUME	10 900 000 cu.m.		
MEAN DEPTH	4.5 m.		
MAX. DEPTH	23.5 m.		
PERIMETER, MAIN SHORE	17 500 m.		
PERIMETER, ISLANDS	1 260 m.		
BENCH MARK HEIGHT ABOVE WATER LEVEL	2 m.		

Province of British Columbia Ministry of Environment		FISHERIES BRANCH INVENTORY OPERATIONS	
<h1>DAHL LAKE</h1>		DEPTHS IN METRES	
WATERSHED CODE: 08-0500-200		U.T.M. CO-ORDINATE: 10-5958-4805	
M.U. 7-12	FAIR DWG: B.A.D.	REV. DATE:	
PLOTTING: D.M.C.	FAIR DWG. CHECK: D.M.C.	SCALE: 1:5000	
CONTOURS: J.A.B.	DRAFT DATE: JAN. 17, 1986	N.T.S. NO: 936/14	
CALCULATIONS: D.M.C.	APPROVED: <i>J.A.B.</i>		
TECH. CHECK: D.J.G.			

VANCOUVER