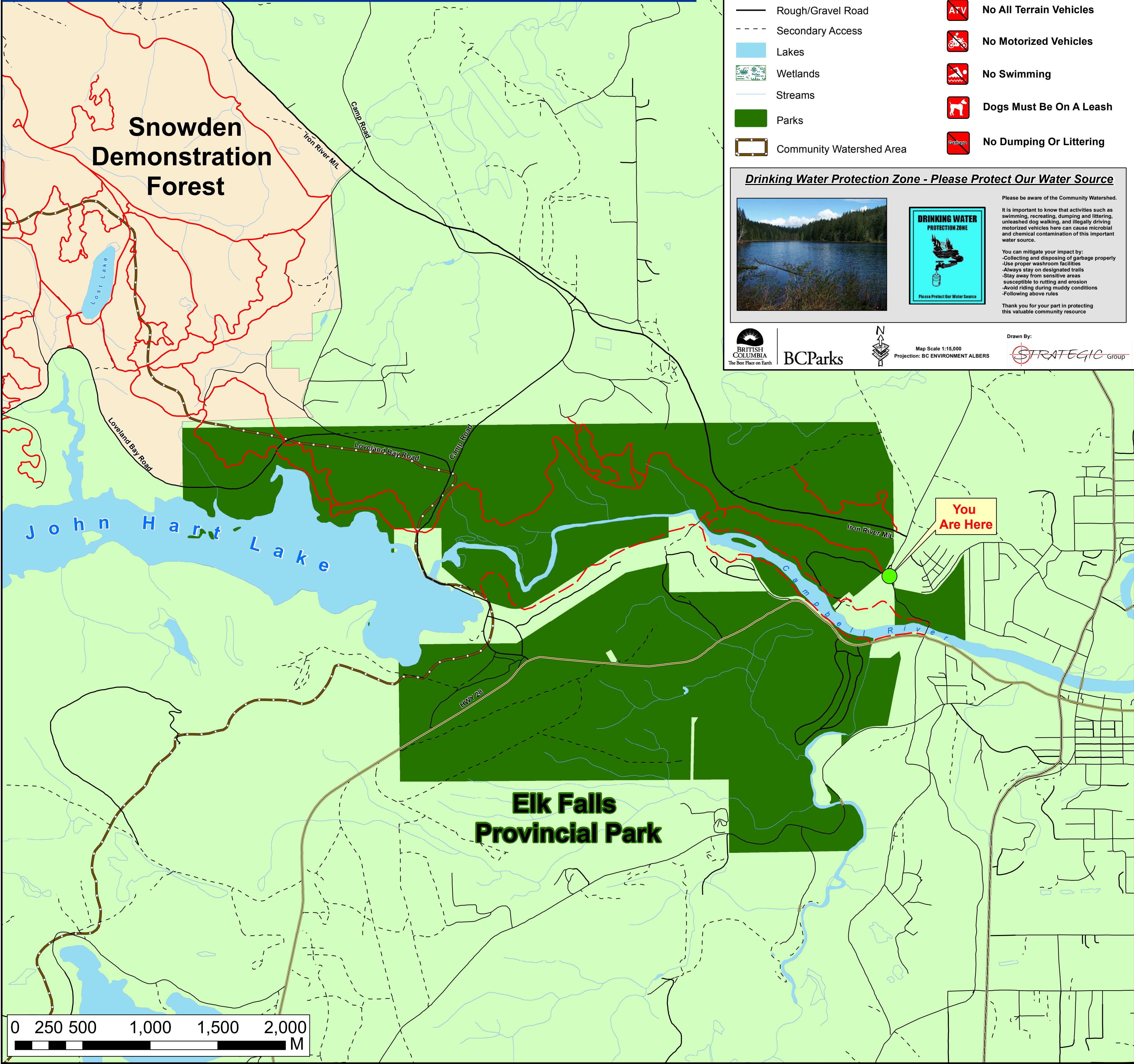



# Elk Falls Provincial Park

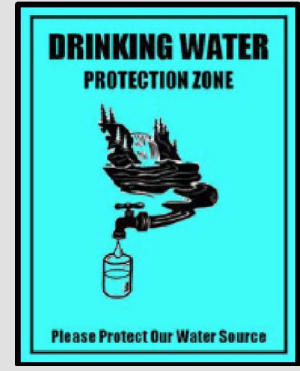


### Legend

- Walk Trails
- Bike/Hike Trails
- Highway
- Rough/Gravel Road
- Secondary Access
- Lakes
- Wetlands
- Streams
- Parks
- Community Watershed Area
- No Fires
- No All Terrain Vehicles
- No Motorized Vehicles
- No Swimming
- Dogs Must Be On A Leash
- No Dumping Or Littering

### Drinking Water Protection Zone - Please Protect Our Water Source





Please be aware of the Community Watershed.

It is important to know that activities such as swimming, recreating, dumping and littering, unleashed dog walking, and illegally driving motorized vehicles here can cause microbial and chemical contamination of this important water source.

You can mitigate your impact by:

- Collecting and disposing of garbage properly
- Use proper washroom facilities
- Always stay on designated trails
- Stay away from sensitive areas susceptible to rutting and erosion
- Avoid riding during muddy conditions
- Following above rules

Thank you for your part in protecting this valuable community resource