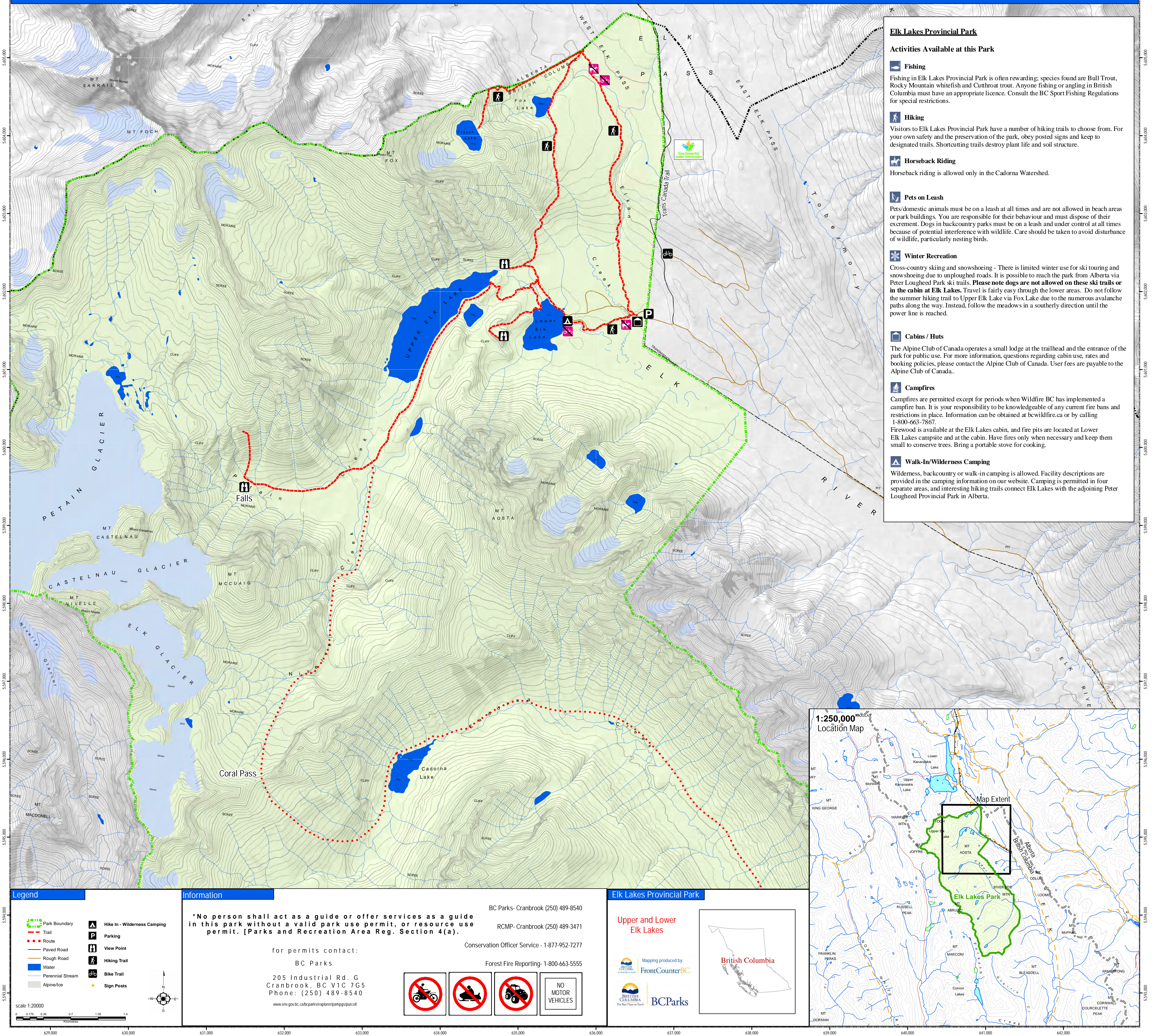


Elk Lakes Provincial Park



Elk Lakes Provincial Park

Activities Available at this Park

Fishing

Fishing in Elk Lakes Provincial Park is often rewarding; species found are Bull Trout, Rocky Mountain whitefish and Cutthroat trout. Anyone fishing or angling in British Columbia must have an appropriate licence. Consult the BC Sport Fishing Regulations for special restrictions.

Hiking

Visitors to Elk Lakes Provincial Park have a number of hiking trails to choose from. For your own safety and the preservation of the park, obey posted signs and keep to designated trails. Shortcutting trails destroy plant life and soil structure.

Horseback Riding

Horseback riding is allowed only in the Cadorna Watershed.

Pets on Leash

Pets/domestic animals must be on a leash at all times and are not allowed in beach areas or park buildings. You are responsible for their behaviour and must dispose of their excrement. Dogs in backcountry parks must be on a leash and under control at all times because of potential interference with wildlife. Care should be taken to avoid disturbance of wildlife, particularly nesting birds.

Winter Recreation

Cross-country skiing and snowshoeing - There is limited winter use for ski touring and snowshoeing due to unploughed roads. It is possible to reach the park from Alberta via Peter Lougheed Park ski trails. **Please note dogs are not allowed on these ski trails or in the cabin at Elk Lakes.** Travel is fairly easy through the lower areas. Do not follow the summer hiking trail to Upper Elk Lake via Fox Lake due to the numerous avalanche paths along the way. Instead, follow the meadows in a southerly direction until the power line is reached.

Cabins / Huts

The Alpine Club of Canada operates a small lodge at the trailhead and the entrance of the park for public use. For more information, questions regarding cabin use, rates and booking policies, please contact the Alpine Club of Canada. User fees are payable to the Alpine Club of Canada.

Campfires

Campfires are permitted except for periods when Wildfire BC has implemented a campfire ban. It is your responsibility to be knowledgeable of any current fire bans and restrictions in place. Information can be obtained at bcwildfire.ca or by calling 1-800-663-7867.

Firewood is available at the Elk Lakes cabin, and fire pits are located at Lower Elk Lakes campsite and at the cabin. Have fires only when necessary and keep them small to conserve trees. Bring a portable stove for cooking.

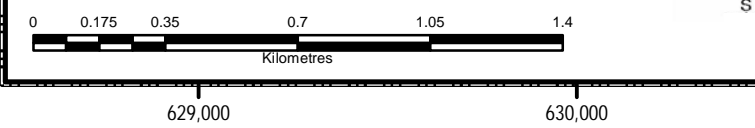
Walk-In/Wilderness Camping

Wilderness, backcountry or walk-in camping is allowed. Facility descriptions are provided in the camping information on our website. Camping is permitted in four separate areas, and interesting hiking trails connect Elk Lakes with the adjoining Peter Lougheed Provincial Park in Alberta.

Legend

- Park Boundary
- Trail
- Route
- Paved Road
- Rough Road
- Water
- Perennial Stream
- Alpine/Ice
- Hike In - Wilderness Camping
- Parking
- View Point
- Hiking Trail
- Bike Trail
- Sign Posts

scale 1:20,000



Information

*No person shall act as a guide or offer services as a guide in this park without a valid park use permit, or resource use permit. [Parks and Recreation Area Reg. Section 4(a)].

for permits contact:
BC Parks

205 Industrial Rd. G
Cranbrook, BC V1C 7G5
Phone: (250) 489-8540

www.emv.gov.bc.ca/bcparks/option/parkpgs/burcell

BC Parks- Cranbrook (250) 489-8540

RCMP- Cranbrook (250) 489-3471

Conservation Officer Service - 1-877-952-7277

Forest Fire Reporting- 1-800-663-5555



Elk Lakes Provincial Park

Upper and Lower
Elk Lakes

Mapping produced by:
FrontCounterBC
BC Parks



1:250,000
Location Map

