

Okanagan Region

**MANAGEMENT DIRECTION  
STATEMENT**

**March, 2003**

for **Greenbush Lake**  
Protected Area



Ministry of Water, Land  
and Air Protection  
Environmental  
Stewardship Division

# Greenbush Lake Protected Area

## Forward and Approvals Page

### Forward

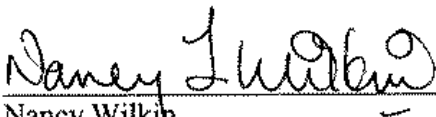
Greenbush Lake Protected Area was set aside primarily for the protection of important spring range for grizzly bears and habitat for mountain caribou. In addition, the area has recreation value for backcountry hiking, ski touring, heli-skiing, hunting and fishing. The area protects landscapes from a valley bottom lake, through forested slopes to rolling sub alpine/alpine.

### Approvals



\_\_\_\_\_  
Drew Carmichael  
Regional Manager  
Environmental Stewardship Division

Date: March 23, 2003



\_\_\_\_\_  
Nancy Wilkin  
Assistant Deputy Minister  
Environmental Stewardship Division

Date: March 31 / 03

## Table of Contents

Forward and Approvals Page .....	2
Forward .....	2
Introduction.....	4
Purpose of the Management Direction Statement .....	4
Setting and Context .....	4
Protected Area Attributes.....	6
Conservation .....	6
Recreation / Tourism.....	6
Cultural Heritage.....	7
Education and Research Role .....	7
Significance in the Protected Areas System .....	7
Other Land Uses and Interests .....	7
Access .....	7
Existing Tenures, Alienations and Encumbrances.....	7
Adjacent Patterns of Land Use.....	8
Aboriginal Interests.....	8
Other Agency Interests.....	8
Private and Public Stakeholder Interests.....	8
Role of Greenbush Lake Protected Area.....	9
Management Commitments and Issues .....	9
Management Direction From Previous and Ongoing Planning .....	9
Management Issues.....	10
Management Direction.....	11
Management Objectives and Strategies .....	11
Integration with Other Land Use Planning Processes.....	12
Consultation and Future Planning.....	12
Zoning Plan.....	12
Appendix I – Acceptable Activities, Uses and Facilities - Greenbush Lake Protected Area .....	12

# Introduction

## Purpose of the Management Direction Statement

A management direction statement (MDS) provides strategic management direction for a protected area. A MDS also describes protected area values, management issues and concerns, a management strategy focused on immediate priority objectives and strategies, and direction statements from other planning processes. While strategies may be identified in the MDS, the development and implementation of all these strategies is subject to funding. In addition, all development associated with these strategies within the protected area is subject to the BC Parks' Impact Assessment Policy.

This MDS was developed through direction received from the Okanagan-Shuswap Land and Resource Management Plan (OSLRMP), as well as comments from government staff, stakeholders and interest groups.

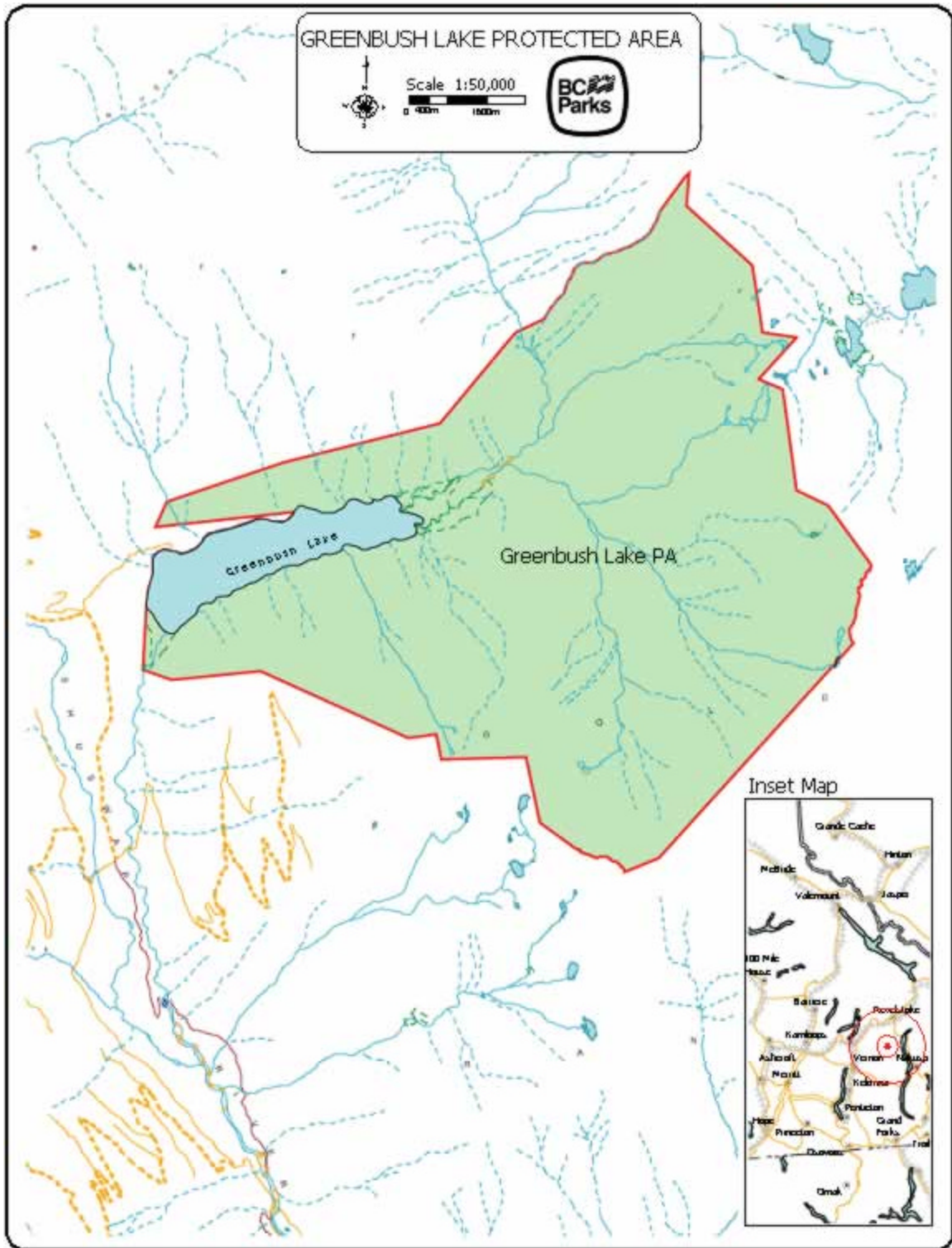
## Setting and Context

The provincial Protected Areas Strategy (PAS) provided the framework for identifying areas that would contribute towards ecological representation within the province. As part of that strategy, the provincial government undertook many strategic level regional planning initiatives throughout the province. The Okanagan-Shuswap Land and Resource Management Plan is the regional land use plan that pertains to the Greenbush Lake Protected Area. The OSLRMP concluded that a number of protected areas should be established to protect natural, cultural heritage and/or recreational values. The Okanagan-Shuswap LRMP Table used the Protected Areas Strategy as a guide in the selection of protected areas and in providing directions for their management.

The Greenbush Lake Protected Area was recommended by the Okanagan-Shuswap Land and Resource Management Plan in 2000 and established as a protected area by Order in Council under the *Environment and Land Use Act* on April 18, 2001. The *Park Act* and associated regulations apply as if the protected area is a Class A provincial park named and described in Schedule D of the *Protected Areas of British Columbia Act*. As directed in the Order in Council, provision is made for a possible mining development road to access lands north of the protected area. The protected area will be transferred to Class A park status when this matter is completed.

Greenbush Lake Protected Area is located approximately 60 kilometres northeast of Vernon in the Monashee Mountains of southeastern British Columbia. The Greenbush Lake Protected Area covers an area of approximately 2,820 hectares.

The area protects important spring and summer range for grizzly bears (blue-listed species), important habitat for mountain caribou (red-listed species). The protected area also provides high quality recreational opportunities for heli-skiing, backcountry ski touring, wilderness hiking, as well as hunting and fishing.



## Protected Area Attributes

### Conservation

- Situated in the well represented Central Columbia Mountains Ecosection
- Contains a range of biogeoclimatic zones from mid elevation Interior Cedar Hemlock (ICH) forest to Englemann Spruce - Subalpine Fir (ESSF), to Alpine Tundra (AT):

BEC Variant	Total BEC variant in province (ha)	Hectares of BEC variant in existing protected areas	% of BEC variant in existing protected areas	Hectares of BEC variant protected in Greenbush Lake	% of BEC variant in provincial protected areas system in Greenbush Lake
ESSFwc4	745,553	122,959	16.5%	1,223	0.99%
ESSFwcp4	165,671	31,027	18.7%	289	0.93%
ICHvk1	242,459	26,110	10.8%	737	2.82%
ICHwk1	527,873	82,423	15.6%	10	0.01%
WATER	2,300,373	292,496	12.7%	148	0.05%
ATun	391,766	100,381	25.6%	44	0.04%
ATunp	16,815,709	3,779,027	22.5%	3,711	0.01%

- Old growth ESSF and ICH with exceptionally large-sized cedars and spruce
- A large 1986 burn north of Greenbush Lake
- Aquatics include a large lake and wetlands in the ICH; a smaller lake in the alpine; creeks draining into Greenbush Lake
- Bull trout (blue-listed species) present in the main lake
- Important spring and summer range for grizzly bear (blue-listed species) and important ICH habitat for mountain caribou (red-listed species)
- Area has good denning habitat for grizzly bears and winter range for caribou (north aspects that result in the snow remaining on the ground well into the spring)
- Provides a representative forest ecosystem for mountain caribou at lower elevations
- Lower elevation riparian habitats are recognized as being important for marten
- Old growth ICH forests provide suitable habitat for a variety of wildlife species such as pileated woodpecker, yellow-rumped warbler, brown creeper and several species of owls

### Recreation / Tourism

- The recreational settings represented in the protected area include valley bottom lakes, forested slopes and rolling sub-alpine and alpine
- The protected area is a remote yet logging road accessible wilderness area where visitors can enjoy low key, rustic outdoor recreation experiences in a scenic mountainous setting
- A Ministry of Forests' recreation site is located on the west side of Greenbush Lake outside of the protected area
- The protected area forms part of an area that has recreational values for winter-based activities including heli-skiing and ski touring
- Summer hiking and backpacking occur at low use levels
- Opportunities to access rolling alpine terrain with scenic vistas

- Wading and fishing opportunities (rainbow trout, bull trout) along the shores of Greenbush Lake
- Canoeing and other forms of non-motorized use of the lake
- Wildlife viewing, hunting and nature appreciation
- The glacier is a key natural feature that attracts recreationists to the area both in summer and winter

### **Cultural Heritage**

- Currently, there is no inventory of cultural sites for the protected area

### **Education and Research Role**

- The mountain caribou have been studied to a limited extent within the protected area. There may be future studies on mountain caribou within the protected area and surrounding area.

### **Significance in the Protected Area System**

- Lies within the Central Columbia Mountains Ecoregion. This ecoregion is well represented within the provincial protected area system (18.85%). Greenbush Lake Protected Area contributes less than 1% of the overall protected area representation of this ecoregion.
- Protects a similar landscape as Monashee Provincial Park, but includes more valley bottom sites and a mostly intact watershed
- Important habitat for grizzly bears, marten and mountain caribou
- Provides connectivity for mountain caribou herds to the north and south
- Provides low intensity recreational opportunities for heli-skiing, fishing, wildlife viewing, hunting, hiking and nature appreciation

### **Other Land Uses and Interests**

#### **Access**

- Access to the protected area is from the Sugar Lake Forest Service Road
- Road access terminates at the Forest Service Recreation Site at the lake
- A rustic boat launch at the Forest Service site enables car-top boats (canoes, row boats) to access the lake
- A rough hiking trail commencing at the Forest Service Recreation Site, leads eastward along the north shore of Greenbush Lake, otherwise, the protected area is trail-less
- In recent winters, snowmobilers have gained access to the upper slopes above Greenbush Lake from adjacent areas

#### **Existing Tenures, Alienations and Encumbrances**

All existing liens, charges, and encumbrances other than those applying to commercial logging, mining or energy exploration and development will continue to be authorized

through issuance of park use permits (PUPs). This policy recognizes all existing *Land Act* tenures, special use permits (SUPs), water rights, trapping licenses and other legal tenures and rights.

Existing tenures within the protected area:

- Two traplines
- One guide/outfitter
- Canadian Mountain Holidays (Revelstoke) has a commercial recreation tenure (heli-skiing) that overlaps the Greenbush Lake Protected Area and is valid until 2010
- No water or angling guide licences or tenures
- Subject to ministerial approval with the required permitting and assessments, road access through the protected area to access lands beyond for mineral development, will be permissible

### **Adjacent Patterns of Land Use**

- Forest harvesting activities occur on the lands in the vicinity and adjacent to the protected area
- Riverside Forest Products (Armstrong Division) has the timber harvesting rights within the Timber Supply Area surrounding the protected area and intends to continue with harvesting activities in the vicinity of the protected area (west, northwest and southwest) within the next 1 - 5 years
- Commercial heli-skiing activities by Canadian Mountain Holidays occur throughout the surrounding area. A helicopter fuel site is located at the west end of the lake outside the protected area
- The Nordic Ski and Kayak Institute has submitted an application for ski touring to BCAL (4400749) that overlaps the protected area

### **Aboriginal Interests**

- Interests of the Okanagan and Shuswap First Nations are unknown

### **Other Agency Interests**

- Ministry of Forests for maintenance of adjacent Forest Service Road and Recreation Site and assistance in the maintenance of forest health issues. There are no forest health concerns within the protected area at present.
- Ministry of Forests, Protection Branch manages wildfire responses on behalf of the Environmental Stewardship Division.
- Land and Water BC for the management of commercial recreation activities on adjoining lands where tenures overlap with the protected area

### **Private and Public Stakeholder Interests**

Private Interests:

- Canadian Mountain Holidays
- Nordic Ski and Kayak Institute



Public interests:

- Casual outdoor recreation (hiking, ski touring)
- Nature viewing
- Recreational hunting and fishing
- Cultural and heritage values
- Nature conservation and ecosystem management (non-government groups and organizations)
- Fire management for ecosystem health and protection of adjacent private holding protection
- Scientific research by universities and non-government organizations

## **Role of Greenbush Lake Protected Area**

The primary role of Greenbush Lake Protected Area is to protect a semi-intact watershed in the Monashee Mountains from valley bottom to ridge top (ICH through ESSF to AT). The protected area provides important connectivity of habitat for mountain caribou and grizzly bears from areas to the north and south of the protected area. The focus for management within the protected area is for conservation values associated with caribou, marten and grizzly bear habitat. A secondary role is to continue providing recreational opportunities for wilderness hiking, ski touring, heli-skiing, hunting, fishing, and nature appreciation.

## **Management Commitments and Issues**

### **Management Direction From Previous and Ongoing Planning**

The Okanagan-Shuswap Land and Resource Management Plan (LRMP) recommended establishment of the protected area with logging, mining and energy exploration and development prohibited. However, road access through the protected area for mine development may occur. The LRMP provided statements of management direction that have been incorporated into the management direction statement.

## Management Issues

The following table lists specific issues, by theme, requiring management action:

Theme	Issue
Protecting Natural Values	<ul style="list-style-type: none"> <li>• Lack of detailed knowledge on the use of the protected area by mountain caribou and grizzly bear</li> <li>• Snowmobiling in critical winter caribou habitat</li> <li>• Heli-skiing and ski touring conflict with caribou use to varying degrees</li> <li>• Presence of invasive weeds</li> <li>• Need to develop a vegetation management strategy to deal with forest fire, disease and health issues</li> <li>• Need to develop strategies to minimize human/wildlife conflicts</li> <li>• How to ensure ecological integrity of the protected area is maintained</li> <li>• Management of old growth forests within the protected area</li> <li>• Impacts on conservation values/mitigations of a possible mining development road to access adjacent Crown land north of the protected area</li> </ul>
Protecting Recreational Values	<ul style="list-style-type: none"> <li>• Level of appropriate visitor facilities</li> <li>• Determination of permissible activities</li> <li>• Ensuring the wilderness character of the area is protected</li> <li>• Impacts on recreation values/mitigations of a possible mining development road to access adjacent Crown land north of the protected area</li> <li>• Management of commercial and non-commercial recreation activities to minimize conflicts</li> <li>• Provision of continued road access to the protected area</li> <li>• Managing recreational activities to ensure important caribou and grizzly bear habitat is not impacted</li> <li>• Management of the adjacent Recreation Site (camping) if Ministry of Forests no longer manages recreation and no other interest takes on the responsibility</li> </ul>
Protecting Cultural Values	<ul style="list-style-type: none"> <li>• Lack of knowledge on cultural heritage values in the protected area</li> <li>• Lack of archaeological inventories</li> </ul>
Public Safety	<ul style="list-style-type: none"> <li>• Need to identify and mitigate public safety hazards</li> <li>• Lack of public safety information</li> </ul>
Visitor Information / Interpretation	<ul style="list-style-type: none"> <li>• Need to provide accurate and up-to-date visitor information concerning recreational opportunities and educational material for the protected area</li> </ul>
First Nations Values	<ul style="list-style-type: none"> <li>• Unknown First Nations information on the area</li> <li>• Need for enhanced communication with First Nations concerning their interests in the protected area</li> </ul>

# Management Direction

## Management Objectives and Strategies

The following table lists specific strategies, by theme, to achieve management objectives:

Objective	Strategy
Protect natural values	<ul style="list-style-type: none"> <li>• Undertake inventories of the protected area’s natural values (flora and fauna), with specific emphasis on grizzly bears, mountain caribou and other forest dependent species</li> <li>• Work with the Ministry of Forests and forest companies to minimize the potential of wind throw resulting from forest harvesting activities on land adjacent to the protected area</li> <li>• Encourage compliance with provincial hunting and angling regulations</li> <li>• Maintain sustainable wildlife harvesting levels for hunters, the guide/outfitter and trappers</li> <li>• Develop a vegetation management strategy for the protected area to specifically deal with issues of forest health (forest fire, disease and infestation)</li> <li>• Management of old growth forest (ICH, ESSF) for the maintenance of important caribou habitat</li> <li>• Work with the commercial heli-ski operator to minimize impacts on wildlife values</li> <li>• Work with commercial operators in the area and snowmobile groups to eliminate snowmobiling in the protected area</li> <li>• Work with Ministry of Energy and Mines and future mineral interests to ensure any possible road development to access minerals north of the protected area is developed and managed giving full consideration to conservation values</li> </ul>
Manage Recreational Values	<ul style="list-style-type: none"> <li>• Prohibit public motorized vehicle use, including snowmobiles, within the protected area; restrict boating activity on Greenbush Lake to non-motorized vessels</li> <li>• Provide low-intensity backcountry recreation opportunities that do not threaten wildlife (e.g. caribou, grizzly bear) and other natural values</li> <li>• Provide no formal facilities in the backcountry</li> <li>• Monitor use and impacts of recreation activities; management of use may require seasonal or other measures to minimize disturbance to conservation values, public safety or fire hazards</li> <li>• Work with the Ministry of Forests to maintain road access to the protected area</li> <li>• Encourage the Ministry of Forests to maintain the Recreation Site (camping area) or find a suitable interest to take over management of the Site; if not feasible, consider inclusion of the Recreation Site in the protected area</li> <li>• Undertake an assessment of public safety hazards within the protected area and take appropriate mitigation measures to minimize, reduce or eliminate identified hazards</li> <li>• Work with the Ministry of Energy and Mines and future mineral interests to ensure any possible road development to access minerals north of the protected area is developed and managed giving full consideration to recreation values</li> </ul>
Protect Cultural Values	<ul style="list-style-type: none"> <li>• Undertake an overview assessment of the cultural values and determine if a detailed management strategy is needed</li> </ul>

Provision of Visitor Information and Services	<ul style="list-style-type: none"> <li>• Provide adequate signage and public information on the natural hazards of the area and ways to minimize public safety incidents (bear awareness, safe boating, proper backcountry travel techniques, avalanche awareness and safety)</li> <li>• Provide information to visitors on the recreational opportunities and experiences available within the protected area, and environmental/ educational messages to protect the conservation values and increase their understanding and enjoyment of the protected area <ul style="list-style-type: none"> <li>○ Focus information efforts on eliminating snowmobile use</li> </ul> </li> </ul>
First Nations	<ul style="list-style-type: none"> <li>• Work with the local First Nations to determine their traditional use and interest in the protected area and develop strategies to manage these interests</li> </ul>

### **Integration with Other Land Use Planning Processes**

This management direction statement, future management direction statements, and all resulting management actions will follow the intent and criteria set out by the Okanagan-Shuswap LRMP for the Greenbush Lake Protected Area. Management of the protected area should be coordinated with land management of other levels of government, including First Nation and other compatible stakeholders in the area. This would be done within the confines of the *Park Act* and BC Parks' Conservation Program Policies.

### **Consultation and Future Planning**

The Environmental Stewardship Division will continue to consult with local groups to determine promotion, information and volunteer strategies. Also, the Environmental Stewardship Division will work with the appropriate Okanagan and Shuswap First Nations to further determine heritage and cultural values and strategies to manage these interests. Future planning will not compromise the ecological integrity of natural or cultural values within the protected area, especially where there are species or communities that are considered at risk in the province. Integrated planning with other agencies, adjacent land managers and interest groups will ensure ecosystem integrity and promote long-term stewardship of the area.

### **Zoning Plan**

The entire protected area is zoned as *Wilderness Recreation*. The objective of this zone is to protect a remote, undisturbed natural landscape and its wildlife values and to provide compatible, low-intensity backcountry recreation opportunities. Low frequency helicopter access for winter recreation activities may be permitted to designated sites. All other off-road motorized or mechanical access or air access is not permitted.

Note: Should the Ministry of Forests Recreation Site become part of the protected area, it would be zoned Intensive Recreation to allow continued informal vehicle-accessible camping.

## Appendix I – Acceptable Activities, Uses and Facilities - Greenbush Lake Protected Area

Activity/Use/Facility	Acceptability
Aboriginal traditional activities and uses	Y
Hunting	Y
Fishing	Y
Trapping	N2
Grazing (domestic livestock)	N
Utility corridors	N
Communication Sites	N
Horse Use/ Pack Animals	N
Guide Outfitting (hunting)	Y
Guide Outfitting (fishing)	Y
Guide Outfitting (nature tours)	Y
Guide Outfitting (river rafting)	N
Cat-Assisted Skiing	N
Ski Hills	N
Commercial Recreation (facility-based)	N
Commercial recreation (non-facility based)	Y
Backcountry Huts	N
Water Control Structures	N
Fish Stocking and Enhancement	N1
Road Access	N1
Off-road Access (snowmobiling)	N
Off-road Access (motorized)	N
Off-road Access (mechanical activities)	N
Motorized Water Access	N
Aircraft Access - helicopter	M
Aircraft Access – fixed-wing	N
Fire Management (suppression)	Y
Fire Management (prescribed fire management)	N
Fire Management (prevention)	Y
Forest Insect/Disease Control	M
Noxious Weed Control	M
Exotic Insect/Disease Control	M
Scientific Research (specimen collection)	M
Scientific Research (manipulative activities)	M

Y= allowed subject to conditions identified in the management direction statement or management plan

M= may be permitted if compatible with protected area objectives

N= not allowed

N1= allowed for expressed management purposes only

N2= present and allowed to continue but not normally allowed