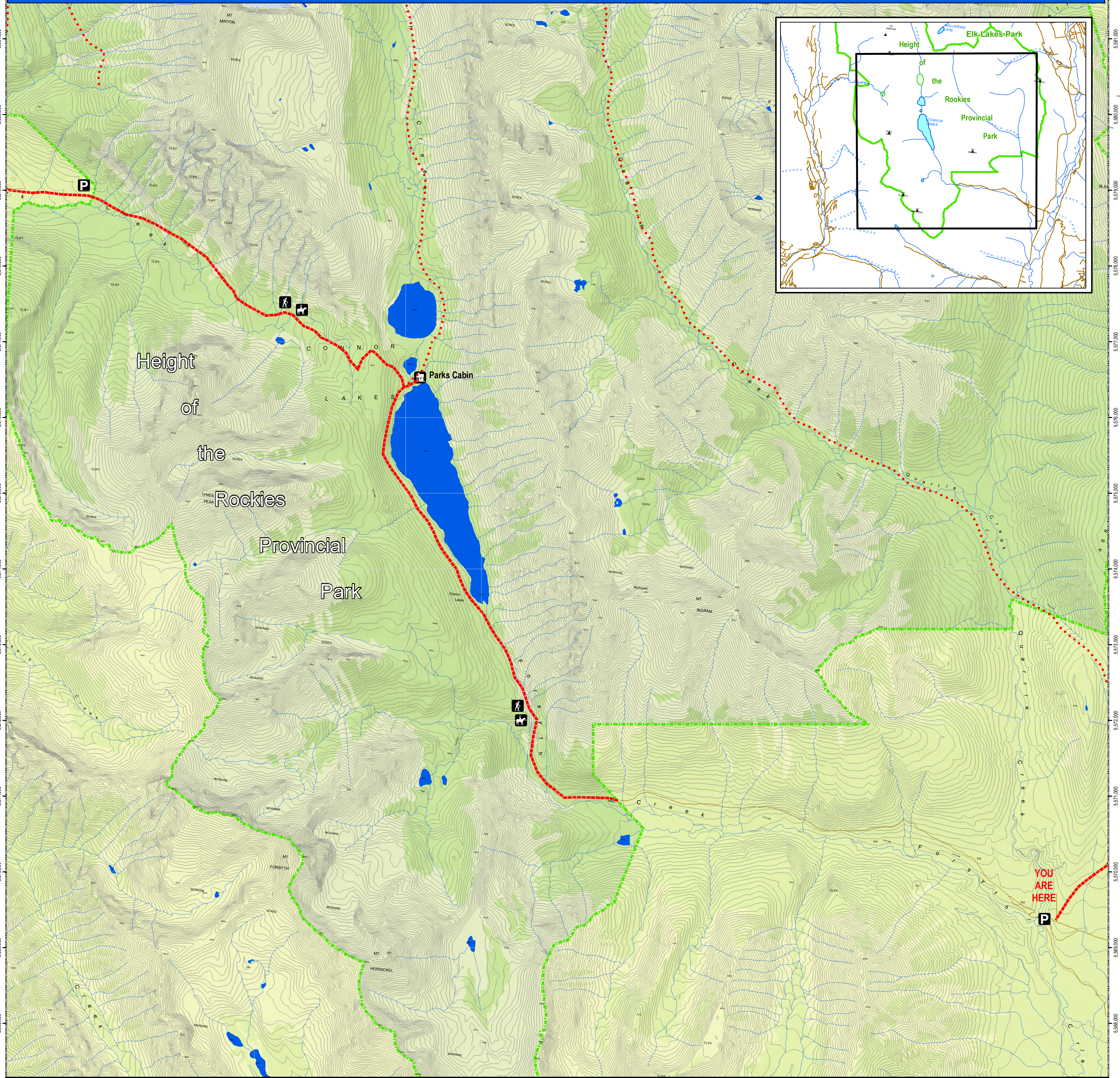


Height of the Rockies Provincial Park



Legend

- Trail (Red dashed line)
- Route (Red dotted line)
- Park Boundary (Green dashed line)
- Paved Road (Blue solid line)
- Rough Road (Orange solid line)
- Water (Blue solid area)
- Perennial Stream (Blue dashed line)
- Glacier (Light blue solid area)
- Alpine / Non-Forested (Light green solid area)
- Forest (Dark green solid area)
- Parking (P icon)
- View Point (V icon)
- Hiking Trail (H icon)
- Horse Trail (H icon)
- Snowmobile Access (S icon)
- Snowmobile No Access (S icon with slash)
- Bike No Access (B icon with slash)

Scale 1:25000

0 0.2 0.4 0.8 1.2 1.6 Kilometers

Information

*No person shall act as a guide or offer services as a guide in this park without a valid park use permit, or resource use permit. [Parks and Recreation Area Reg. Section 4(a).]

for permits contact:
BC Parks
 205 Industrial Rd. G
 Cranbrook, BC V1C 7G5
 Phone: (250) 489-8540
www.env.gov.bc.ca/bcparks/explorer/parksgs/hotr

BC Parks- Cranbrook (250) 489-8540

RCMP- Cranbrook (250) 489-3471

Conservation Officer Service - 1-877-952-7277

Forest Fire Reporting- 1-800-663-5555

NO MOTOR VEHICLES

Height of the Rockies Provincial Park

Connor Lakes
Forsyth Creek
Access

Mapping produced by:
FrontCounterBC

BRITISH COLUMBIA
The Best Place on Earth

BCParks