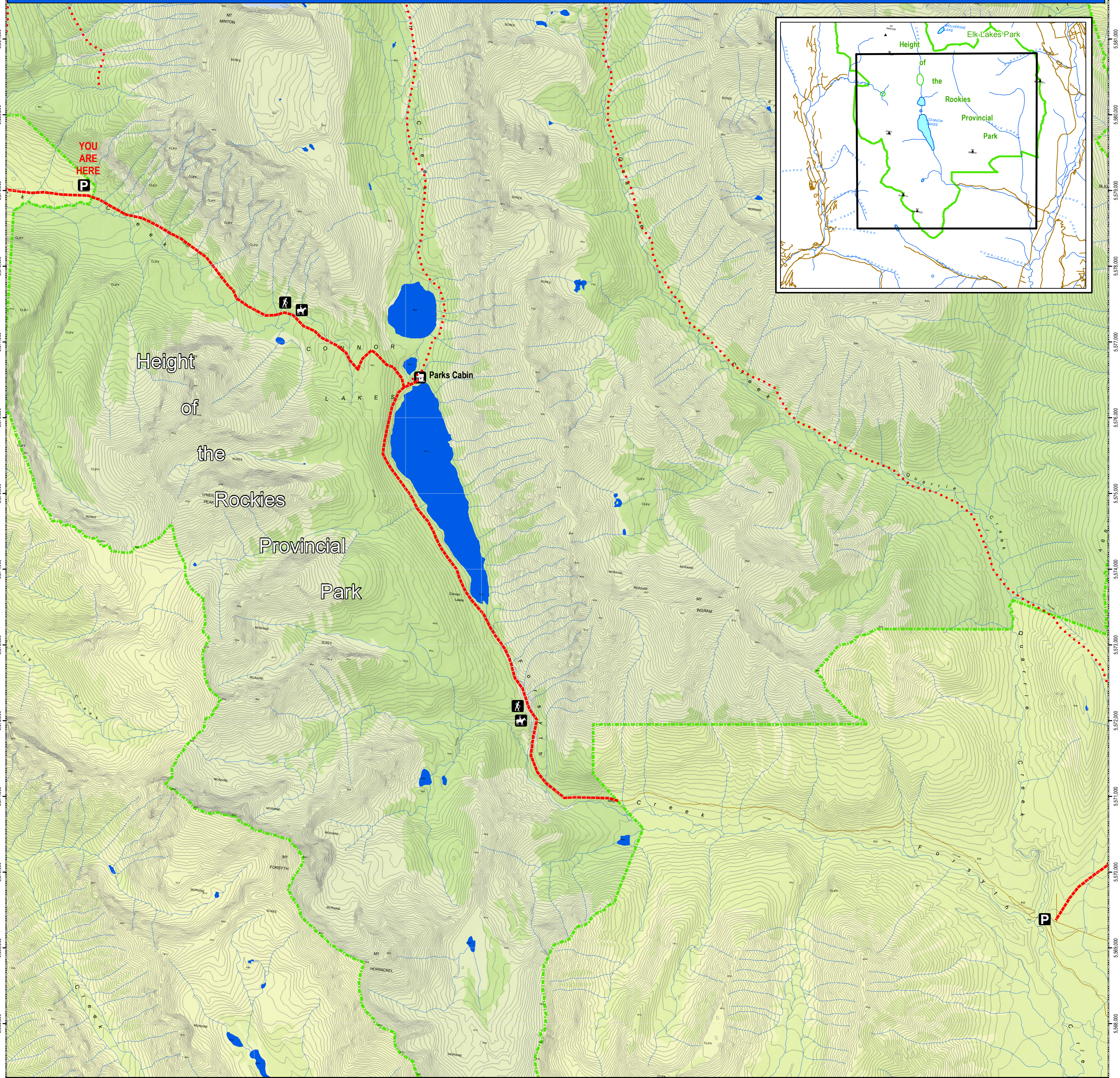


Height of the Rockies Provincial Park



Legend

- Trail (Red dashed line)
- Route (Red dotted line)
- Park Boundary (Green dashed line)
- Paved Road (Solid black line)
- Rough Road (Dashed black line)
- Water (Blue area)
- Perennial Stream (Blue line)
- Glacier (Light blue area)
- Alpine / Non-Forested (Light green area)
- Forest (Dark green area)
- Parking (P icon)
- View Point (Eye icon)
- Hiking Trail (Hiker icon)
- Horse Trail (Horse icon)
- Snowmobile Access (Snowmobile icon)
- Snowmobile No Access (Snowmobile with slash icon)
- Bike No Access (Bike with slash icon)

Scale 1:25000

0 0.2 0.4 0.8 1.2 1.6 Kilometers

Information

*No person shall act as a guide or offer services as a guide in this park without a valid park use permit, or resource use permit. [Parks and Recreation Area Reg. Section 4(a).]

for permits contact:
BC Parks
 205 Industrial Rd. G
 Cranbrook, BC V1C 7G5
 Phone: (250) 489-8540
www.env.gov.bc.ca/bcparks/explorer/parksgs/hotr

BC Parks- Cranbrook (250) 489-8540

RCMP- Cranbrook (250) 489-3471

Conservation Officer Service - 1-877-952-7277

Forest Fire Reporting- 1-800-663-5555

NO MOTOR VEHICLES

Height of the Rockies Provincial Park

**Connor Lakes
Maiyuk Creek
Access**

Mapping produced by:
FrontCounterBC

BC Parks
 The Best Place on Earth