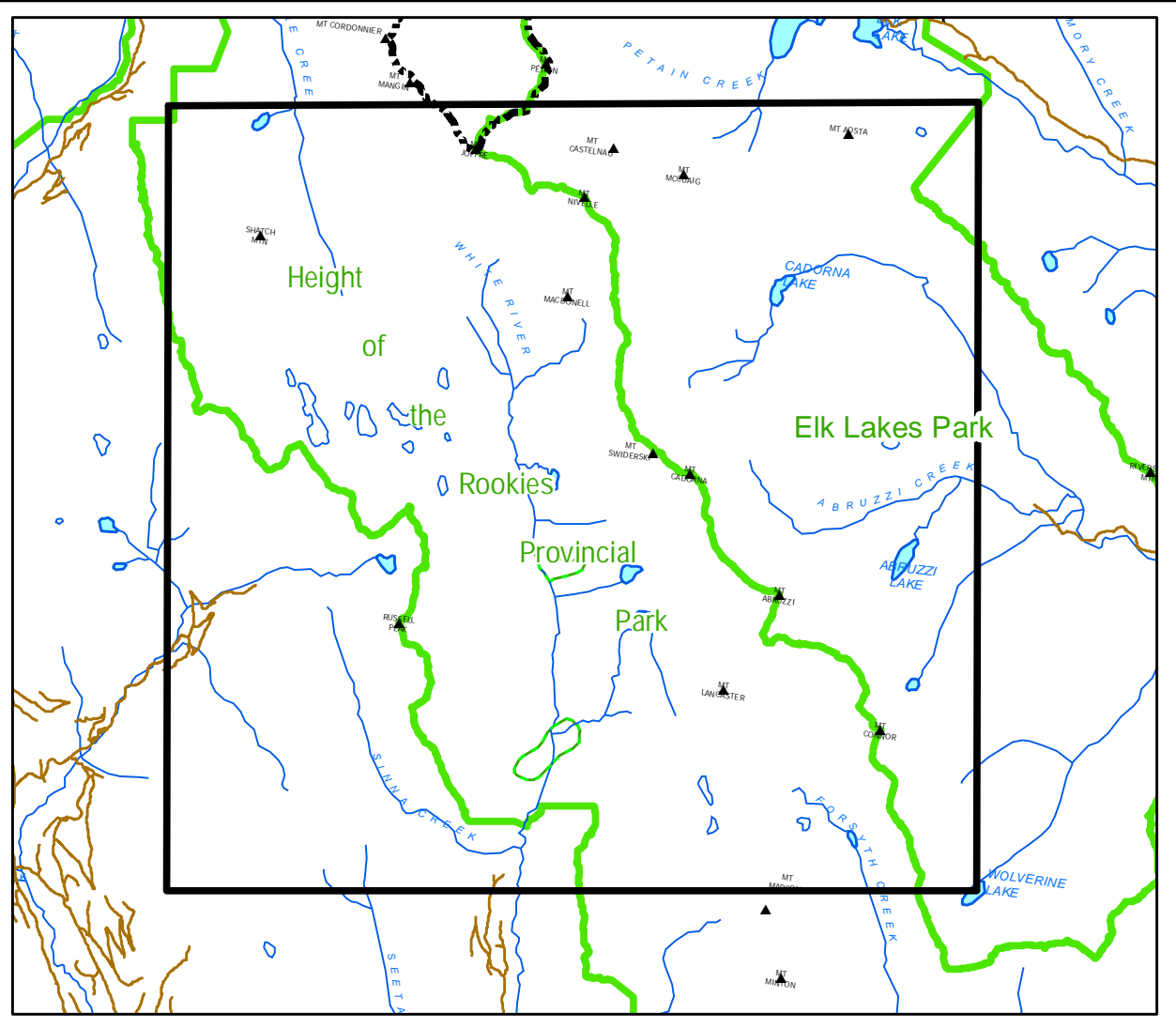
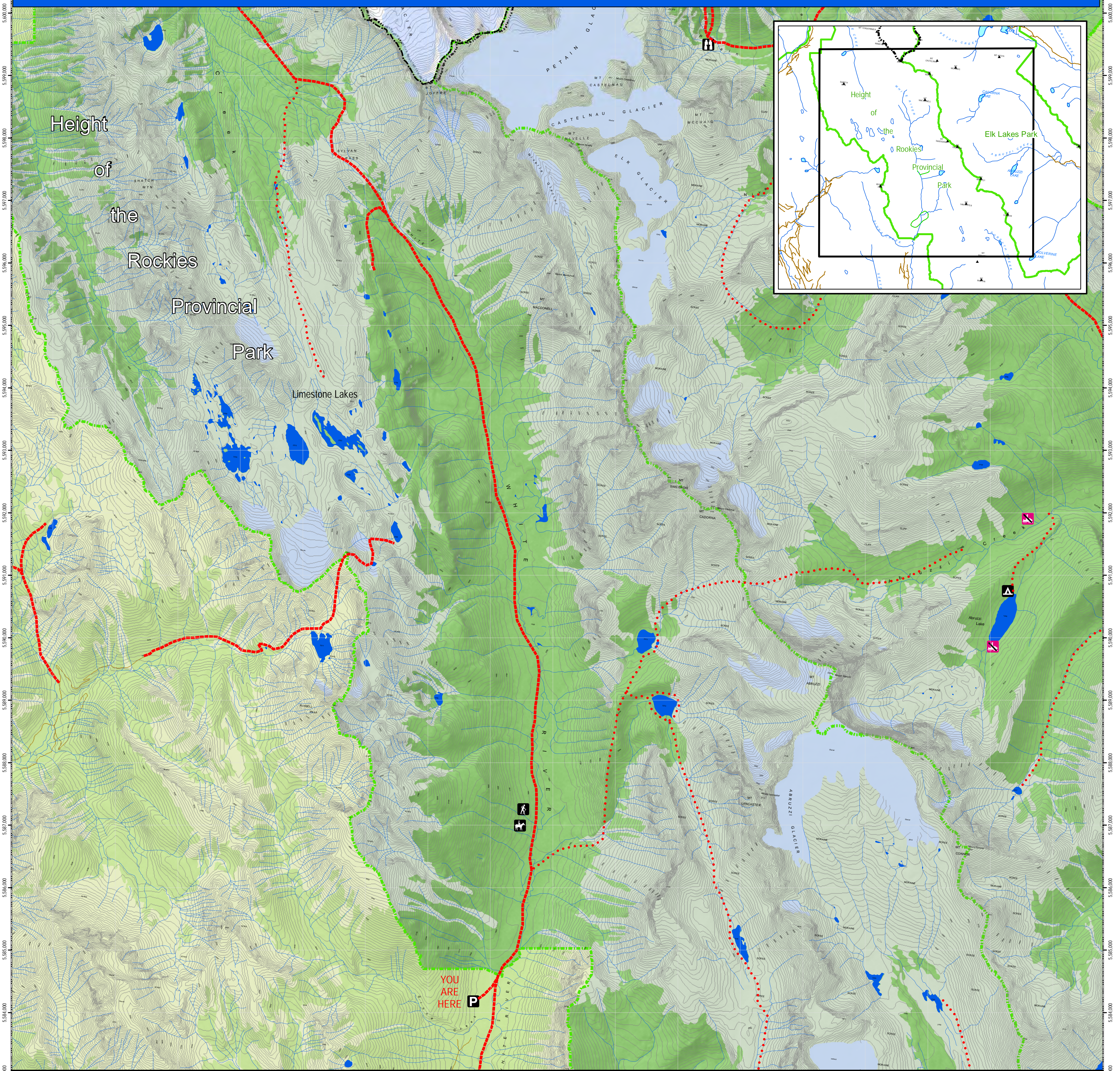


Height of the Rockies Provincial Park



Legend

- Trail (Red dashed line)
- Route (Red dotted line)
- Park Boundary (Green dashed line)
- Paved Road (Black line)
- Rough Road (Brown line)
- Water (Blue area)
- Perennial Stream (Blue line)
- Glacier (Light blue area)
- Alpine / Non-Forested (Light green)
- Forest (Dark green)
- Hike In - Wilderness Camping (Green square with white 'H')
- Parking (Black square with white 'P')
- View Point (Black square with white 'V')
- Hiking Trail (Black line with white arrow)
- Horse Trail (Black line with white horse icon)
- Snowmobile Access (Black line with white snowmobile icon)
- Snowmobile No Access (Black line with white snowmobile icon and red slash)
- Bike No Access (Black line with white bicycle icon and red slash)

scale 1:30000
0 0.25 0.5 1 1.5 Kilometres

Information

*No person shall act as a guide or offer services as a guide in this park without a valid park use permit, or resource use permit. [Parks and Recreation Area Reg. Section 4(a).]

for permits contact:
BC Parks
205 Industrial Rd. G
Cranbrook, BC V1C 7G5
Phone: (250) 489-8540
www.env.gov.bc.ca/bcparks/leisure/parkinfo.htm

BC Parks - Cranbrook (250) 489-8540
RCMP - Cranbrook (250) 489-3471
Conservation Officer Service - 1-877-952-7277
Forest Fire Reporting- 1-800-663-5555

NO MOTOR VEHICLES

Height of the Rockies Provincial Park

Middle Fork, White River

Mapping produced by:
FrontCounterBC

BRITISH COLUMBIA
The Best Place on Earth

BCParks