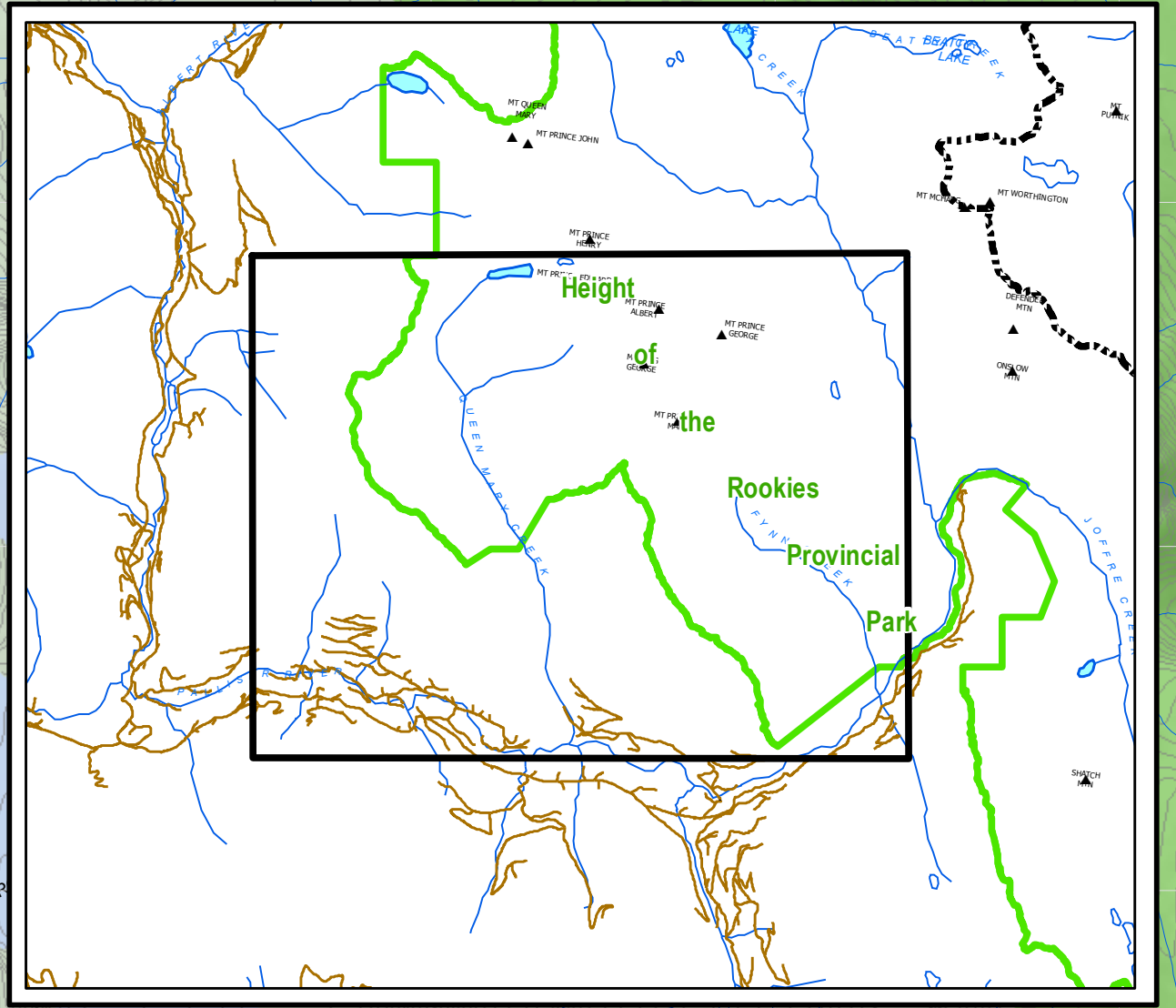
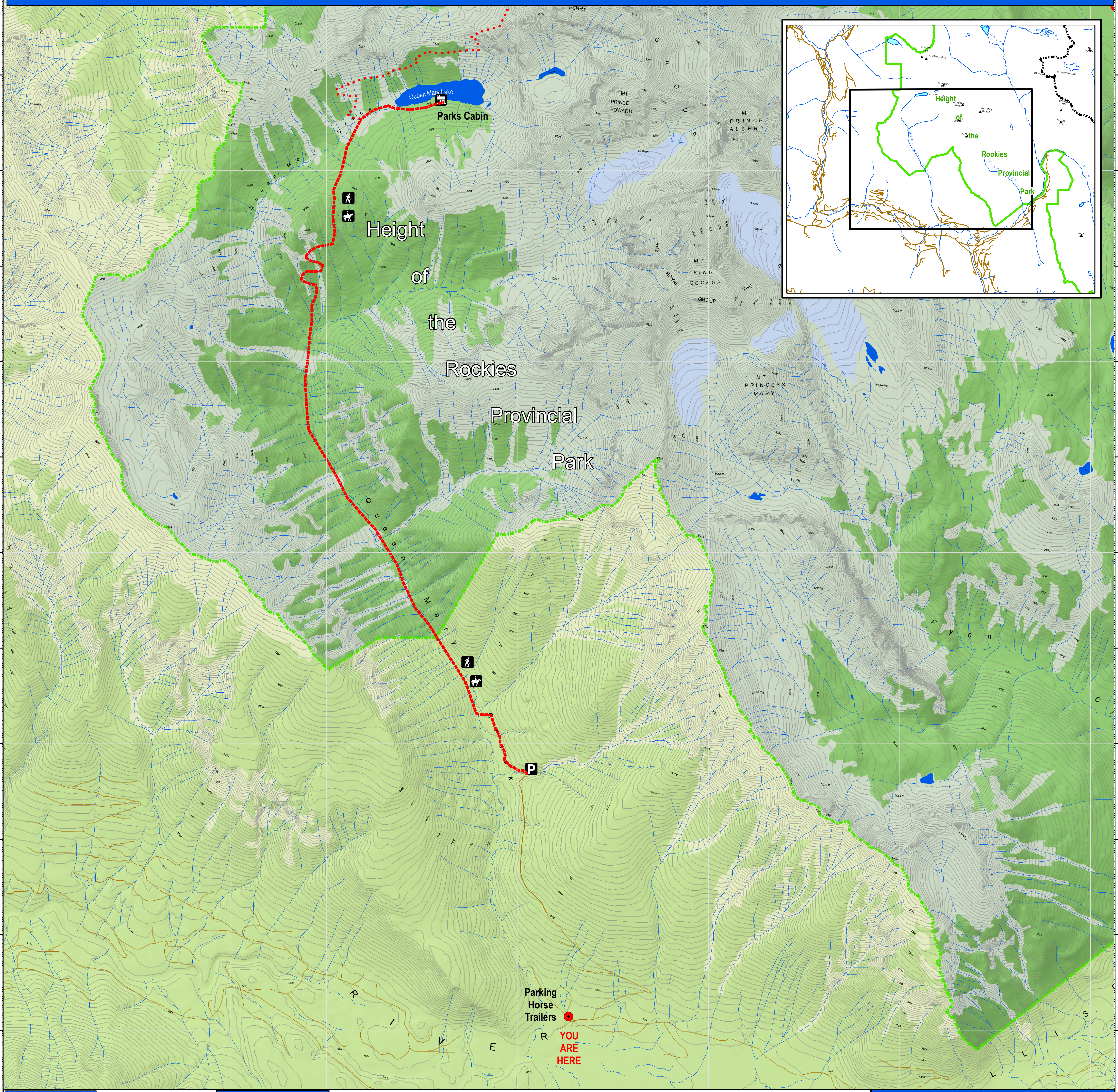


Height of the Rockies Provincial Park



Legend

- Trail (Red dashed line)
- Route (Green dashed line)
- Park Boundary (Green dashed line)
- Paved Road (Blue line)
- Rough Road (Brown line)
- Water (Blue area)
- Perennial Stream (Blue line)
- Glacier (Light blue area)
- Alpine / Non-Forested (Light green area)
- Forest (Dark green area)
- Hike In - Wilderness Camping (Black triangle with 'A')
- Parking (Black square with 'P')
- View Point (Black square with 'V')
- Hiking Trail (Black line with hiker icon)
- Horse Trail (Black line with horse icon)
- Snowmobile Access (Black line with snowmobile icon)
- Snowmobile No Access (Black line with snowmobile icon and slash)
- Bike No Access (Black line with bicycle icon and slash)

scale 1:20000
0 0.15 0.3 0.6 0.9 1.2 Kilometres

Information

*No person shall act as a guide or offer services as a guide in this park without a valid park use permit, or resource use permit. [Parks and Recreation Area Reg. Section 4(a).]

for permits contact:
BC Parks
205 Industrial Rd. G
Cranbrook, BC V1C 7G5
Phone: (250) 489-8540
www.env.gov.bc.ca/bcparks/explorer/parkpgs/hotr

BC Parks - Cranbrook (250) 489-8540
RCMP - Cranbrook (250) 489-3471
Conservation Officer Service - 1-877-952-7277
Forest Fire Reporting - 1-800-663-5555

NO MOTOR VEHICLES

Height of the Rockies Provincial Park

Queen Mary Lake

Mapping produced by:
FrontCounterBC

BC Parks
The Best Place on Earth