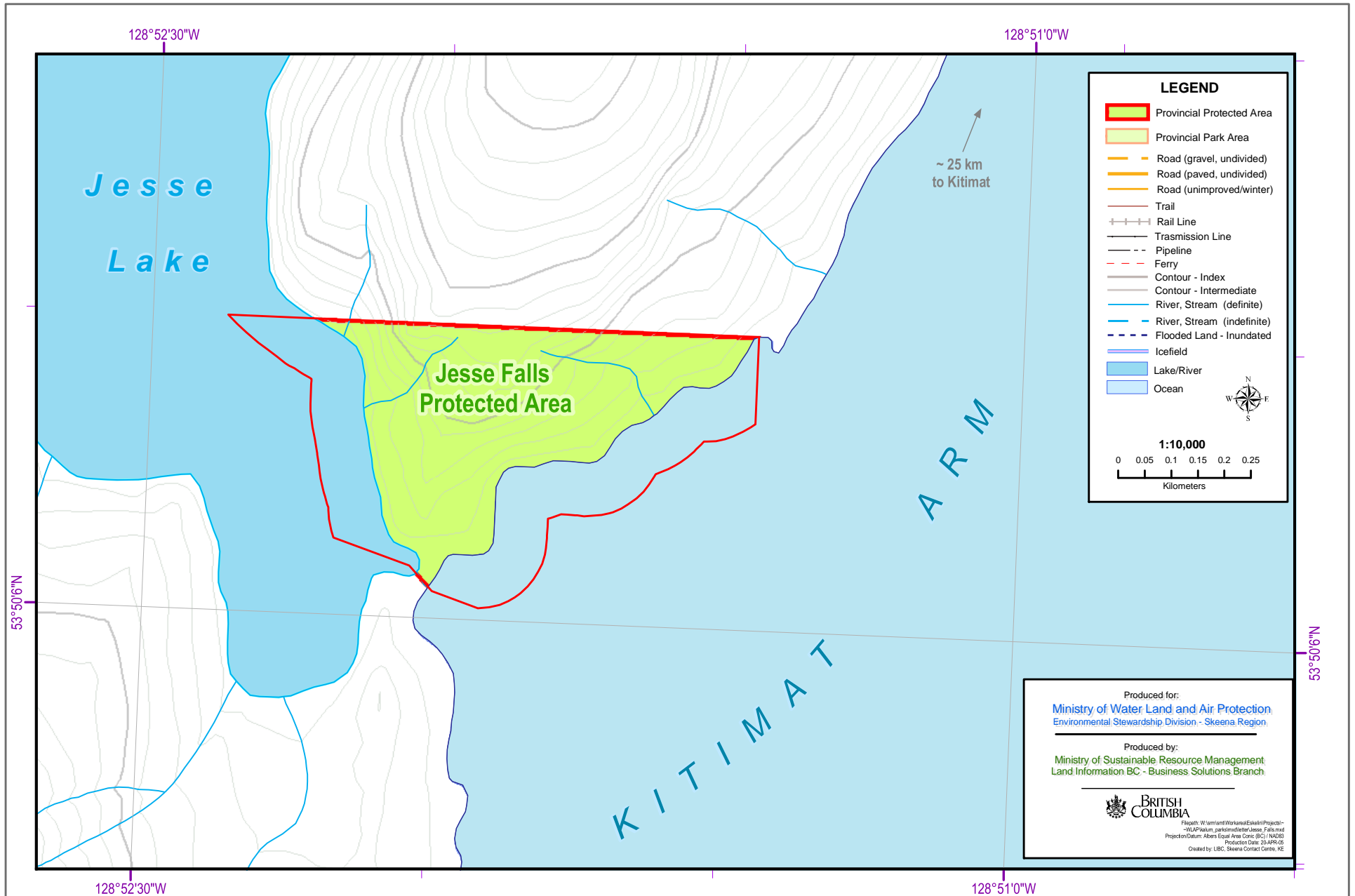


Jesse Falls Protected Area



LEGEND


- Provincial Protected Area
- Provincial Park Area
- Road (gravel, undivided)
- Road (paved, undivided)
- Road (unimproved/winter)
- Trail
- Rail Line
- Transmission Line
- Pipeline
- Ferry
- Contour - Index
- Contour - Intermediate
- River, Stream (definite)
- River, Stream (indefinite)
- Flooded Land - Inundated
- Icefield
- Lake/River
- Ocean

1:10,000

0 0.05 0.1 0.15 0.2 0.25
Kilometers

Produced for:
Ministry of Water, Land and Air Protection
 Environmental Stewardship Division - Skeena Region

Produced by:
Ministry of Sustainable Resource Management
 Land Information BC - Business Solutions Branch

 **BRITISH COLUMBIA**

Filepath: W:\m\m\WorkArea\Estate\Projects\WALP\Platm_perkimad\latter\Jesse_Falls.mxd
 Project and Datum: Albers Spatial Area Coord (SIC) NAD83
 Production Date: 20-APR-06
 Created by: LBC, Skeena Contact Centre, KE