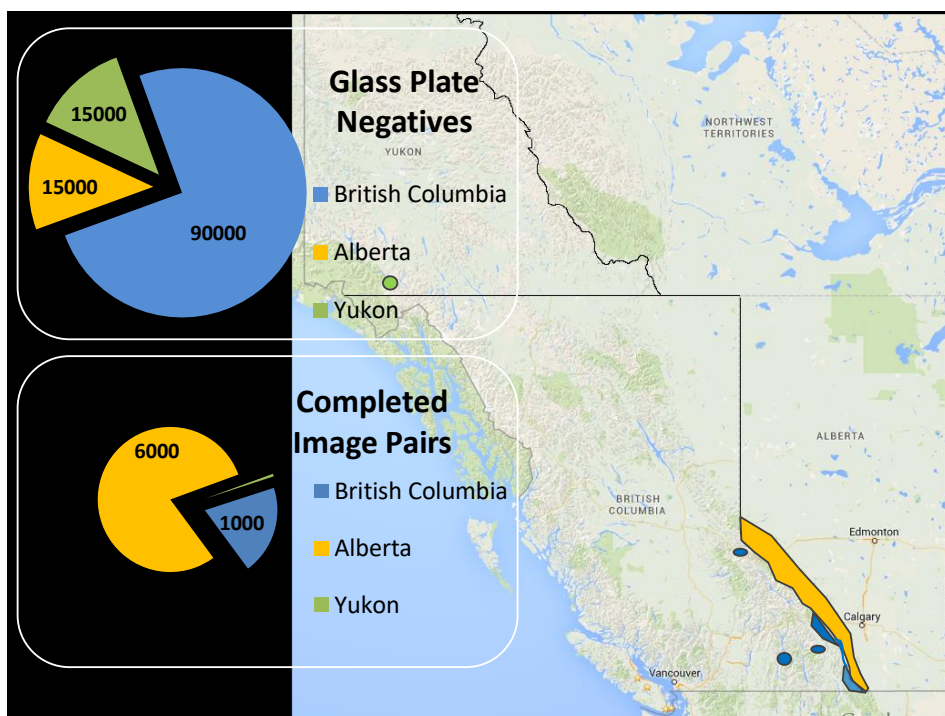
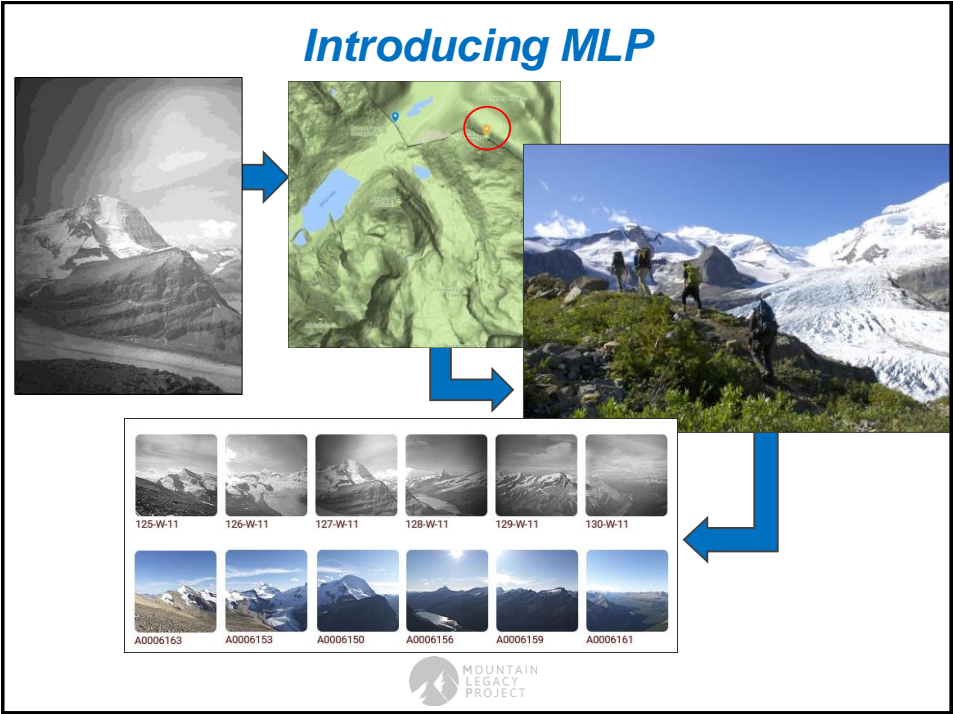
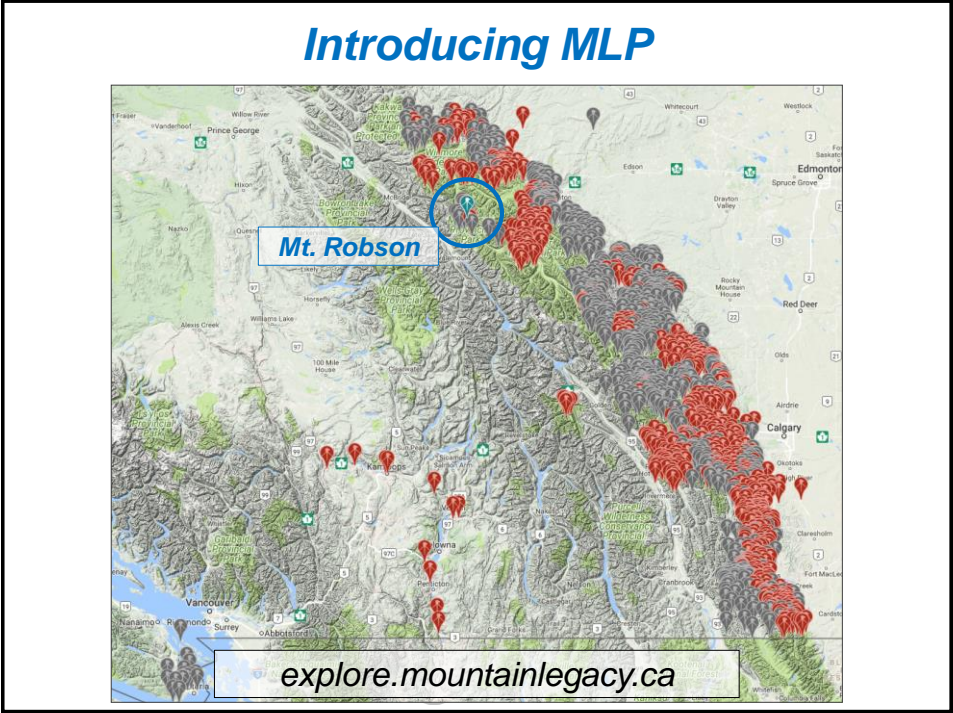


## Discussion

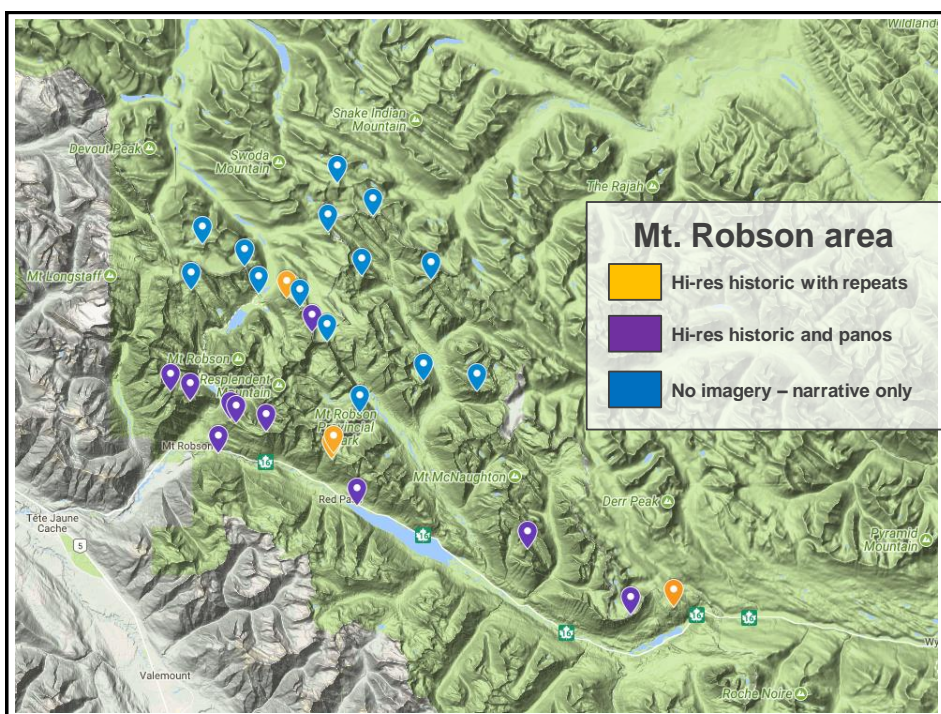
- **Introducing** the Mountain Legacy Project
- **Overview** of the Mt. Robson Landscape Change Project: [robsonlandscape.weebly.com](http://robsonlandscape.weebly.com)
- **What do the images show?**
- **Drilling down** – a few examples
  - Sub-alpine
  - Alpine Tundra
- **What next?**



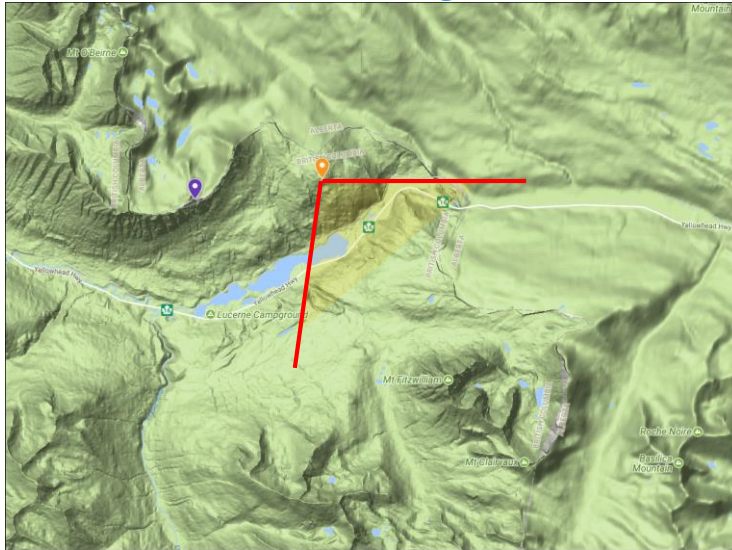


## ***Mt. Robson Landscape Change***

- **1911 Expedition:**  
**A.O. Wheeler**
- **237 images** taken in the Mt. Robson area
- **91 high-res copies** available
- **25 rephotographed** (2011 & 2012), aligned, & online
- **Panoramas of 14** stations available online
- **Analysis** of 6 to 8 image pairs – some online today: [robsonlandscape.weebly.com](http://robsonlandscape.weebly.com)



## What do the images show?



## What do the images show?



*Above Yellowhead Pass, looking south to Mt. Fitzwilliams: A.O. Wheeler, 1911*



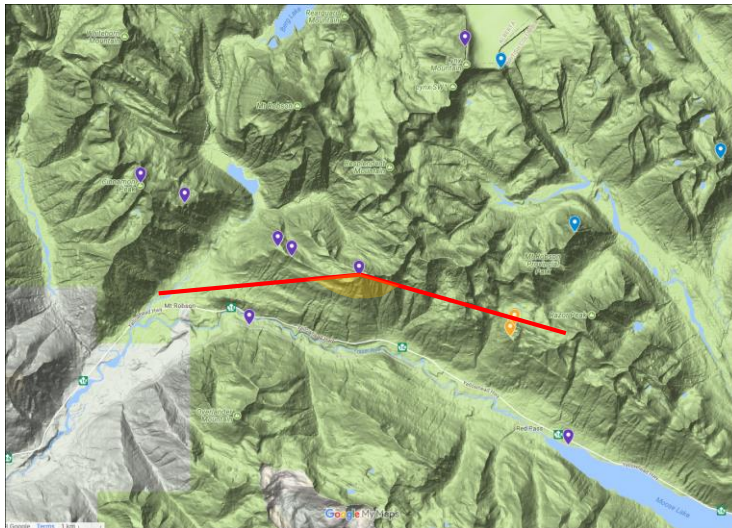
## What do the images show?



*Above Yellowhead Pass, looking south to Mt. Fitzwilliams: MLP, 2012*



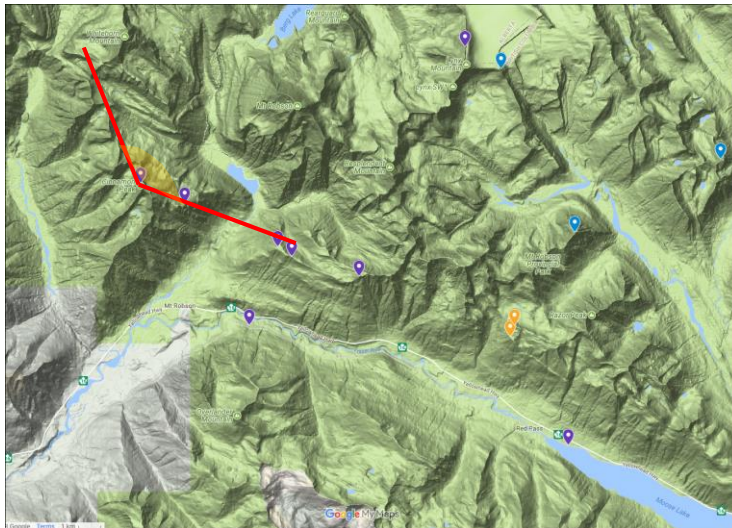
## What do the images show?



## What do the images show?



## What do the images show?



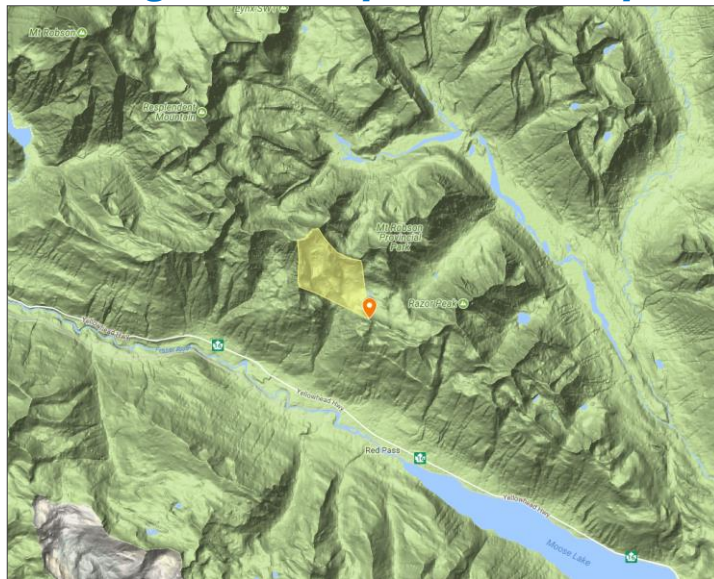
## What do the images show?



*On Cinnamon Peak looking eastward over the Mt. Robson massif: A.O. Wheeler, 1911*



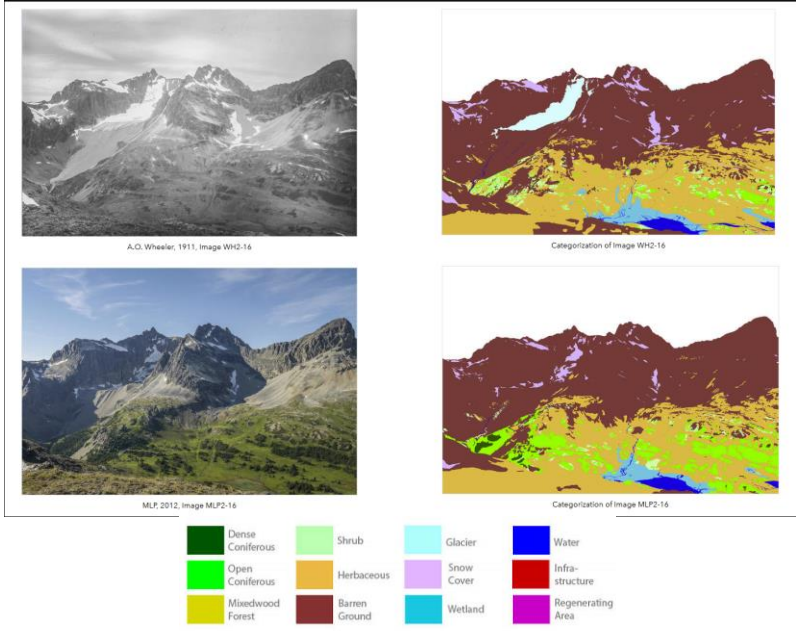
## Drilling down: alpine / sub-alpine



# Drilling down: alpine / sub-alpine



# Drilling down: alpine / sub-alpine

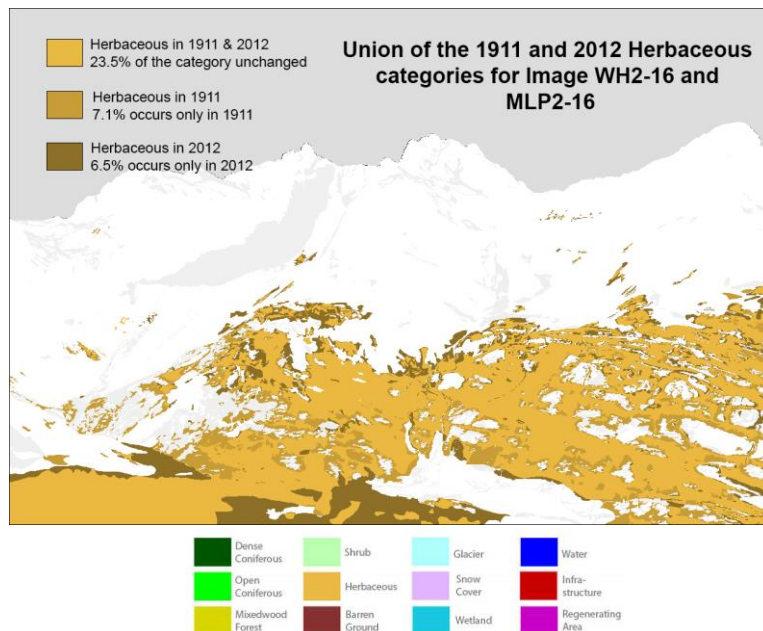


## Drilling down: alpine / sub-alpine

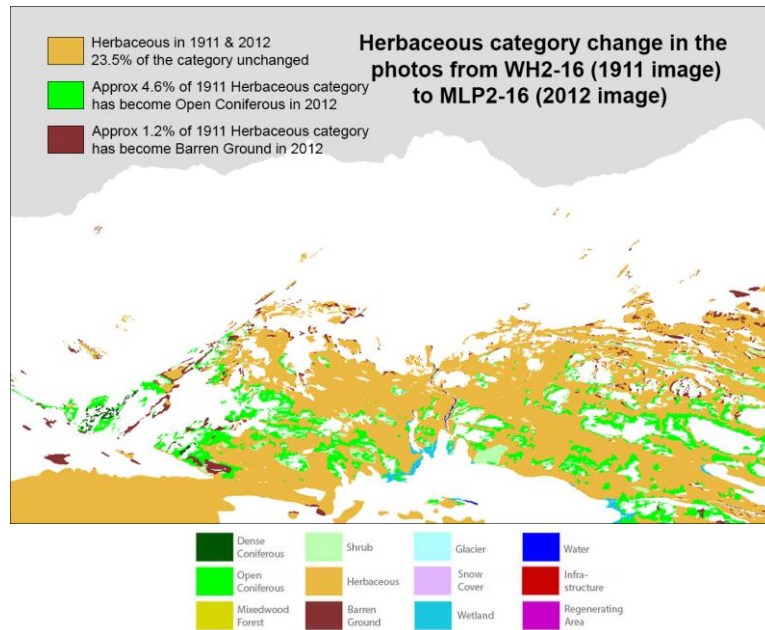
Category	% of 1911 Image 2-16 Per Category	% of 2012 Image 2-16 Per Category	% Unchanged Between 1911 & 2012 Images
Dense Coniferous Forest	0%	0.4%	0%
Open Coniferous Forest	2.5%	10%	2.1%
Mixed Wood	0%	0%	0%
Shrub	2.7%	1.3%	0.1%
Herbaceous	30.6%	30%	23.5%
Barren Land	54.3%	52.9%	47.4%
Glacier	2.6%	<0.1%	<0.1%
Snow Cover	2.9%	1.7%	0.7%
Wetland	2.7%	2.1%	1.8%
Water	1.4%	1.3%	1%
Infrastructure	0%	0%	0%
Regenerating Area	0%	0%	0%



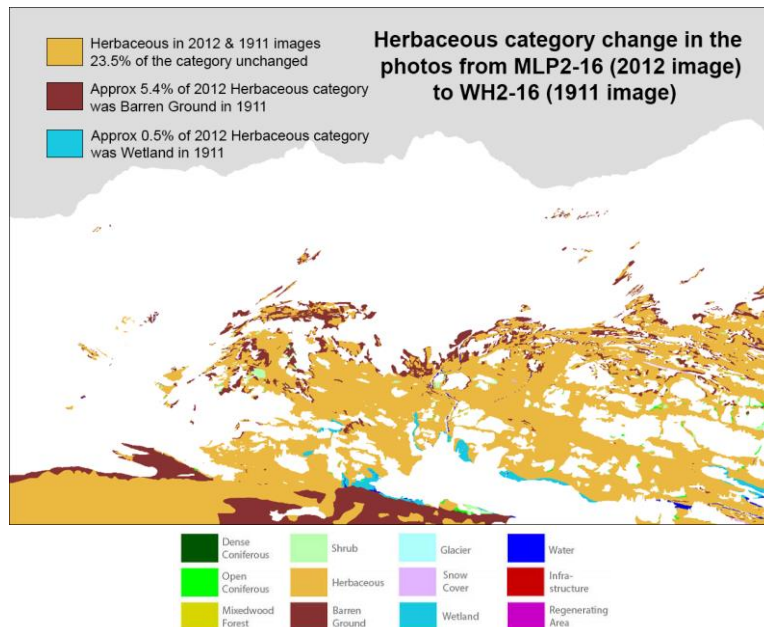
## Drilling down: alpine / sub-alpine



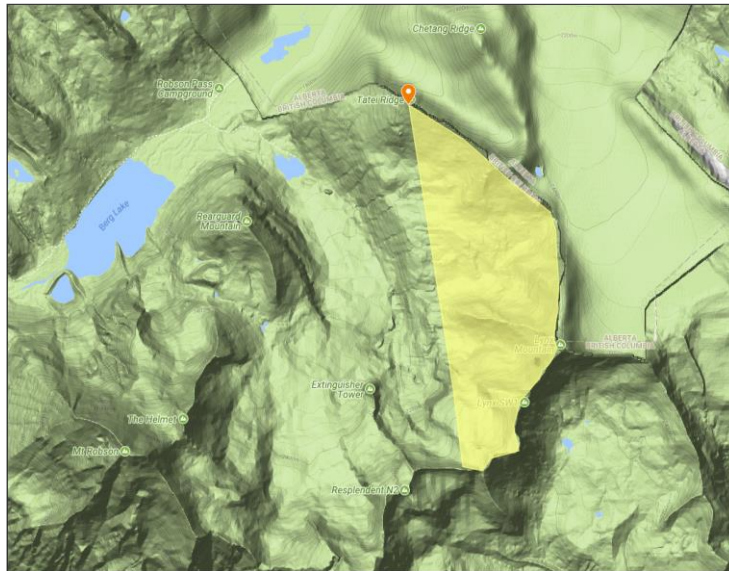
## Drilling down: alpine / sub-alpine



## Drilling down: alpine / sub-alpine



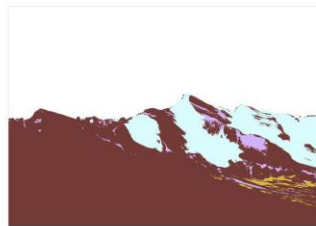
## Drilling down: alpine tundra



## Drilling down: alpine / sub-alpine



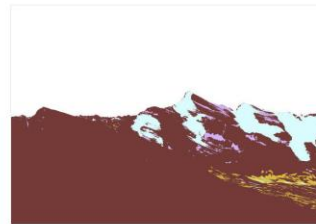
A.O. Wheeler, 1911, Image WH-125



Categorization of Image WH-125



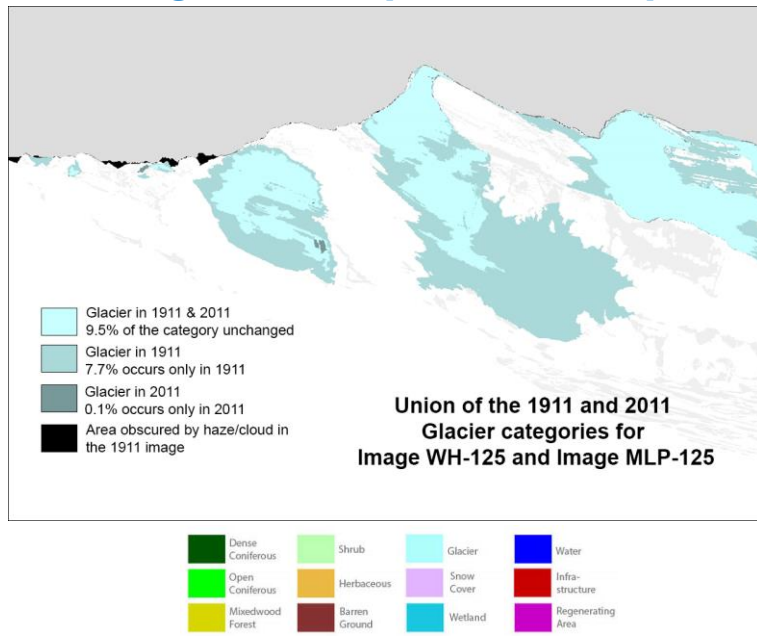
MLP, 2011, Image MLP-125



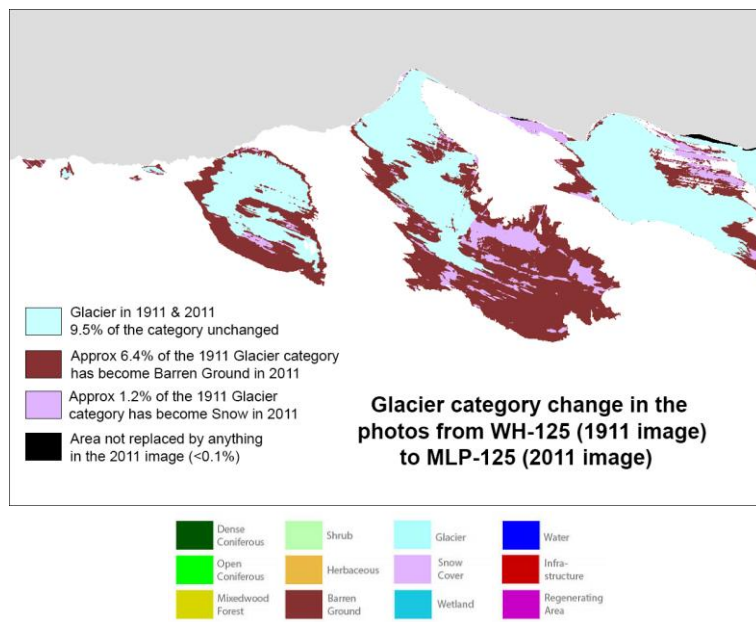
Categorization of Image MLP-125



## Drilling down: alpine / sub-alpine

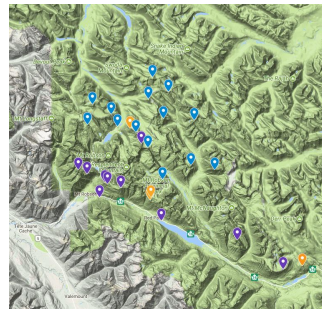


## Drilling down: alpine / sub-alpine



## What next?

- **Contract LAC** to digitize remaining 146 images at high resolution
- **Repeat** priority images
- **Focus on priority analysis** for mngt / scientific questions
- **Investigate additional historical collections** in other BC Parks
- **Research collaboration**
  - Fire regime, habitat change, historical
- **Develop long-term monitoring protocol**
- **Engage the public**
  - Embed on BC Parks website, interpretive, mobile app



*"If you're lucky enough to be in the mountains — you're lucky enough!"*



*On the Nublett, Mt. Assiniboine Provincial Park  
A.O. Wheeler, 1913 – MLP, 2017*