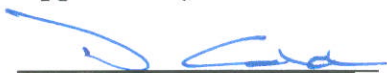


MUDZENCHOOT PROVINCIAL PARK


PURPOSE STATEMENT AND ZONING PLAN Omineca Region 2005

Approved by:



Don Cadden,
Regional Manager
Environmental Stewardship Division
Omineca Region

Date: Nov. 4th 2005



Nancy Wilkin
Assistant Deputy Minister
Environmental Stewardship Division

Date: Oct. 31 2005

Mudzenchoot Provincial Park Purpose Statement and Zoning Plan

This 644 hectare provincial park is located about 90 kilometres northwest of Fort St. James. The nearest road access is the Witch Forest Service Road off the Germansen Landing North Road.

Mudzenchoot Provincial Park is located in a high elevation area around Mudzenchoot Lake, south of Witch Lake. The park is characterized by a unique complex of high elevation grasslands, shrub meadows and wetlands and a portion of Mudzenchoot Lake.

Eight different non-forested, edaphic ecosystems were described in the Mudzenchoot Provincial Park Ecosystem Management Plan completed by Bio-Geo Dynamics Ltd in 2003. These included two rare and endangered dry grassland ecosystems, two upland shrub ecosystems and four wetland ecosystems. These distinct vegetation communities are surrounded by mixed Engelmann Spruce and Sub-alpine Fir forests. The *Danthonia intermedia/Cladina rangiferina* natural plant community was Red-listed by the Conservation Data Centre in November 2004.

There are no public facilities provided at this provincial park.

Primary Role

The primary role of Mudzenchoot Provincial Park is to protect a unique complex of high elevation grasslands, shrub meadows and wetlands and to keep intact the present functioning of all components of the vegetation and aquatic complex.

Known Management Issues	Response
Undetermined impacts from cabin construction, firewood harvesting, horse use and angling by the guide outfitter.	Monitor and assess impacts. Issue park use permits for appropriate uses and activities.
Discourage public use	In order to protect the sensitive ecosystems present, recreational use of this park will not be promoted. Communicate the sensitivity of this park to adjacent resource managers.
Unauthorized access	A 2 - 4 metre wide rough trail has been cut from the north side of the outlet creek on the Witch Lake FSR. There is evidence of ATV use within the rare grassland ecotypes and wetlands adjacent to the outlet creek. As harvesting will inevitably occur to the park boundary develop an information and enforcement strategy to discourage use.
Mineral exploration on adjacent lands	Ensure adequate signing of park boundary to prevent unintentional trespasses.
Fire	High priority for fire suppression. All fires will be suppressed.
Introduction of non-native	There are no introduced species within this park. Adjacent

species	development (particularly roads) increases risk of introducing non-native species through roadside seeding or exploration reclamation activities. Develop Best Management Practices adjacent to the park which stresses need for seeding of native species only along roadsides.
Park expansion	Pursue addition of a small lake and corresponding rare plant communities to the south of the park to improve the integrity and connectivity of the ecosystem complex.

Zoning

Mudzenchoot Provincial Park has been zoned Special Feature to stress the significance of this vegetation community and its sensitivity to disturbance.

CONSERVATION

Representation

- ecosection
- biogeoclimatic subzone/variant

Contributes minimally to the representation of the under-represented Babine Upland Ecosection. 3.7% of this ecosection is protected; Mudzenchoot contributes only 0.9% of the overall protected area representation of this ecosection.

Contributes minimally to the representation of ESSFmv3. 7% of this subzone is protected; Mudzenchoot contributes only 0.7% of the overall protected area representation of this subzone

Special Feature

X Unique complex of high elevation grasslands, shrub meadows and wetlands.

Rare/Endangered Values

X Two rare and endangered dry grassland ecosystems; two blue-listed vascular plants: two coloured sedge (*Carex bicolor*) and tall Jacob's ladder (*Polemonium caeruleum*)

Scientific/Research Opportunities

RECREATION

Representation:

- backcountry
- destination
- travel corridor
- local recreation

Special Opportunities

Education/Interpretation Opportunities

No on-site messaging should be considered

CULTURAL HERITAGE

Representation

unknown

Special Feature

unknown

OTHER MANAGEMENT CONSIDERATIONS

Other Designations

Relationship to Other PAs

Other protected areas near Mudzenchoot Protected Area include Mount Pope, Nation Lakes, Rubyrock Lake and

Stuart River provincial parks.

Co-operative Management Arrangements

Partnerships

Vulnerability

The Conservation Risk Assessment Process identified 2 risk factors (the shape, and the size of the park) for the park and rated them as moderately significant. Two stressors/threats were identified for the park: horse use and exotic species/potential. Both were rated as low significance.

Relationship to Other Strategies

X Recommended for protected area status by the Fort St. James Land and Resource Management Plan in 1999

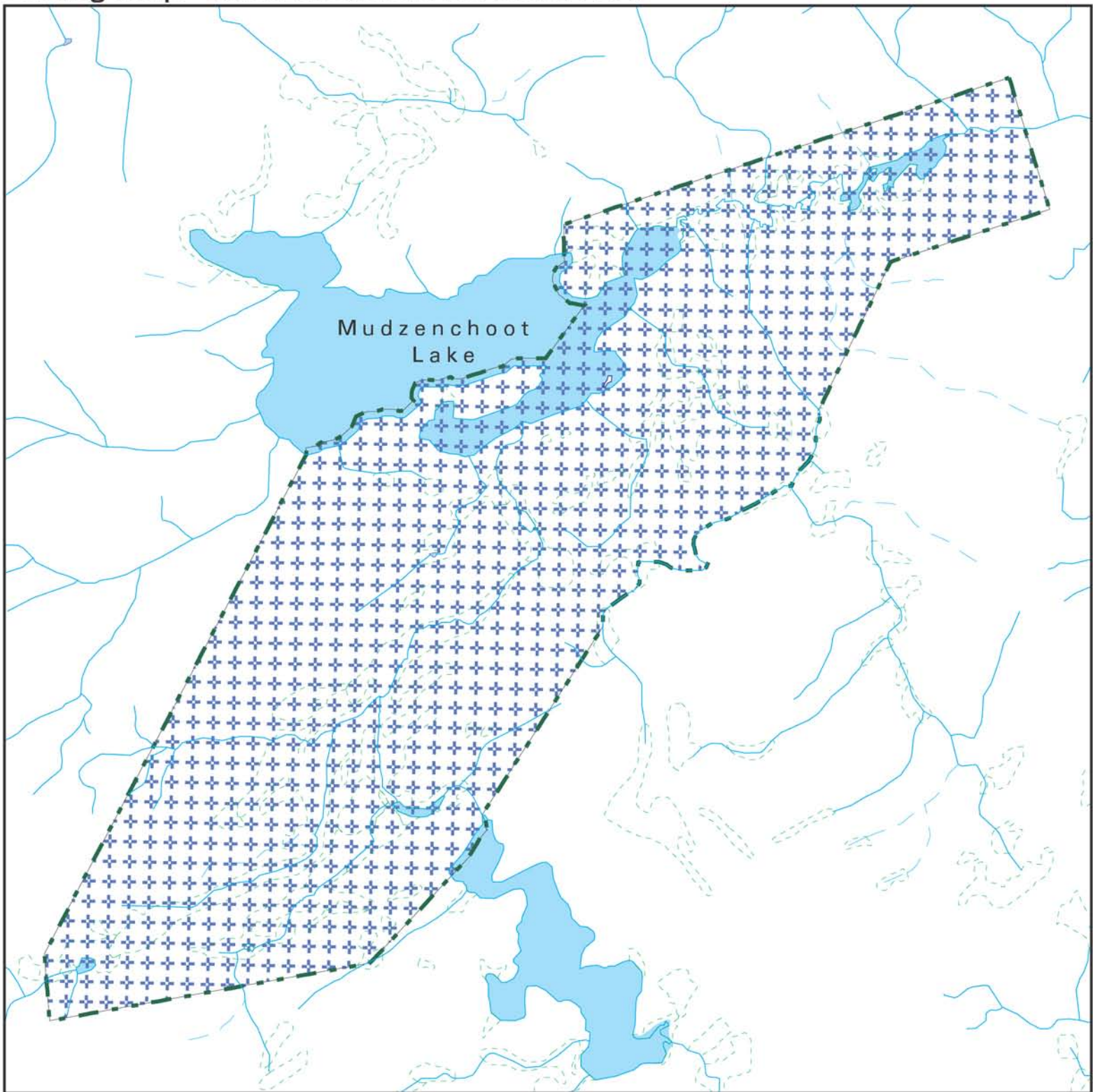
Area:

644 hectares

Date of establishment:



January 25, 2001.

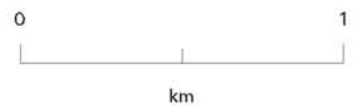
Zoning Map - Mudzenchoot Provincial Park



Projection: Albers Equal Areas
Datum: NAD83



-  Special Feature
-  Protected Area Boundary



Produced in May 2003 for
Ministry of Water, Land and Air
Protection by MSRM, Decision
Support Services

This is a visual representation
only and should not be used for
legal purposes.