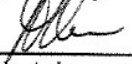


PINE RIVER BREAKS PROVINCIAL PARK



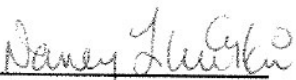
PURPOSE STATEMENT AND ZONING PLAN Peace Region 2006

Approved by:



Andy Ackerman,
Regional Manager
Environmental Stewardship Division
Peace Region

Date: July 13 2006

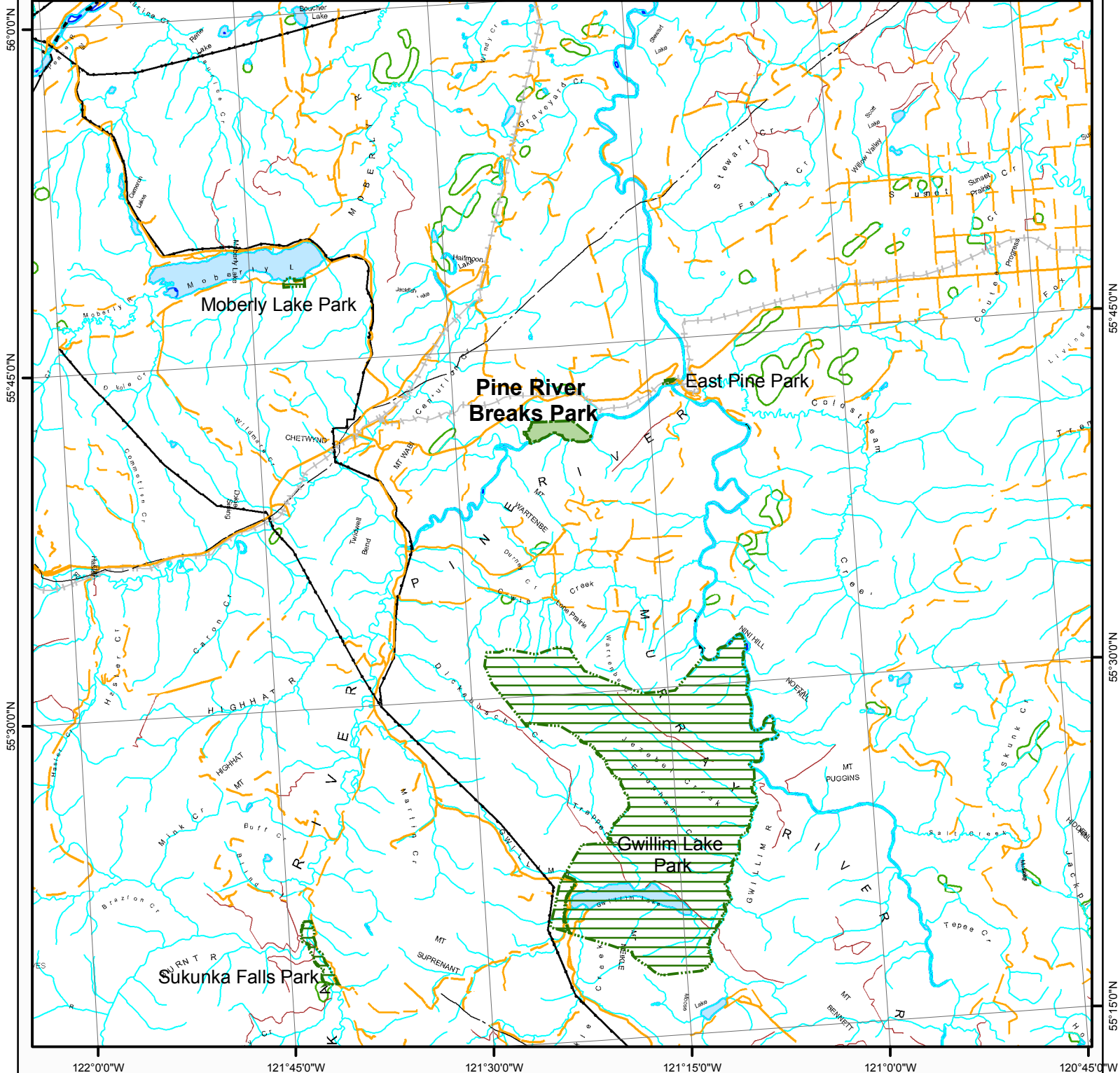


Nancy Wilkin
Assistant Deputy Minister
Environmental Stewardship Division

Date: Oct. 1 2006





Figure 1: Regional Context

Pine River Breaks Park



Projection: UTM Zone 10
Datum: NAD83

Produced in June 2006 for
Ministry of Environment
by Ministry of Agriculture and Lands
Integrated Land Management Bureau

-  Subject Area
-  Other Protected Areas
-  Highway
-  Road

1:425,000
0 1 2 3 4 5
Kilometers



This is a visual representation
only and should not be used for
legal purposes

PINE RIVER BREAKS PROVINCIAL PARK Purpose Statement and Zoning Plan

Primary Role

The **primary** role of Pine River Breaks Provincial Park is to protect an unusual assemblage of glacial landforms, including eskers and kettles, fossil sites, limestone cascades used as mineral licks, and grasslands important for ungulate winter range. Pine River Breaks is located on the north side of the Pine River, approximately halfway between the District of Chetwynd and East Pine River off Highway 97. Visitors can also access the area by boat from the boat launch at East Pine Provincial Park.

Secondary Role

The **secondary** role of the park is to provide local recreation opportunities, including hunting, boating, nature appreciation and wildlife viewing.

Known Management Issues	Response
Lack of inventory of ecological values, including wildlife and vegetation	<ul style="list-style-type: none"> • conduct baseline inventories of wildlife and vegetation
Protection of ecological values from impacts of recreational use	<ul style="list-style-type: none"> • Post educational and regulatory signage
Information on park boundaries and values is not readily available to the public.	<ul style="list-style-type: none"> • post signs indicating park boundaries and provide user information at park entrance. • This has been done
Existing 4x4 roads and traditional camps within park	<ul style="list-style-type: none"> • Restrict vehicle access into the park • Discourage overnight camping in the park by installing appropriate signs.

Zoning

The entire park is zoned Special Feature, to protect grasslands and glacial landforms. Motorized access other than by boat is not appropriate in this park, although snowmobiling is acceptable.

Conservation

- Representation - ecosection Pine River Breaks Provincial Park protects an example of the Peace Lowland ecosection. Only 0.4% of this ecosection is protected throughout the Province, and Pine River Breaks contributes approximately 10% of this protection.
- biogeoclimatic subzone/variant Pine River Breaks Provincial Park provides representation for the BWBSmw 1 (Boreal White and Black Spruce, moist, warm) variant, which is only 0.68% protected in the Province. Pine River Breaks contributes 2.5% of that total.
- Special Feature grasslands; limestone cascade mineral licks and glacial landforms
- Rare/Endangered Values
- Scientific/Research Opportunities

Recreation

- Representation
 - Backcountry
 - Destination
 - Travel corridor
 - Local recreation boating and angling on the Pine River, hunting on the Pine River breaks
- Special Opportunities
- Education/Interpretation Opportunities

Cultural Heritage

- Representation The area has traditionally been used by First Nations of the Treaty 8 Tribal Association. One archaeological site is known in the park, consisting of surface lithics.
- Special Feature

Other Management Considerations

- Other Designations

Relationship to other PAs

Collaborative Management Arrangements

This park will, once the agreement is signed, be subject to the Memorandum of Agreement respecting the management of provincial parks between the Government of BC and the Treaty 8 First Nations.

Partnerships

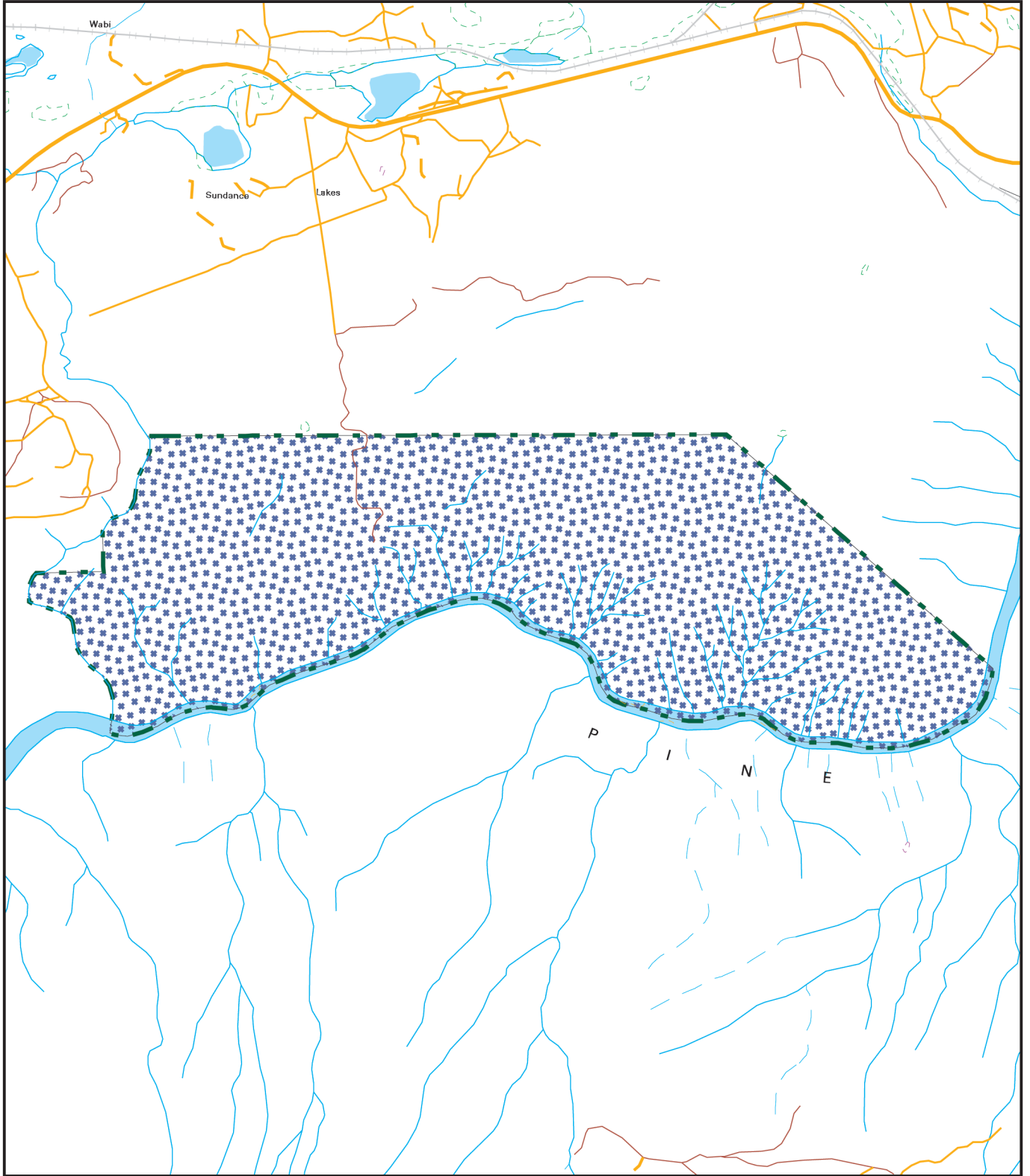
Vulnerability

Relationship to other Strategies

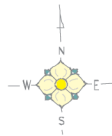
Pine River Breaks was recommended for protection by the Dawson Creek Land and Resource Management Plan.

Area: 614 hectares

Date of establishment: June 29, 2000



Projection: UTM Zone 10
Datum: NAD83



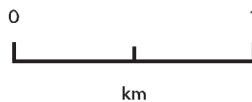
Special Feature



Protected Area Boundary



Produced in Jun 2005 for
Ministry of Water, Land and
Air Protection by MSRM, Business
Solutions Branch



This is a visual representation
only and should not be used for
legal purposes.