



BC Parks

# SENSING THE WORLD AROUND US!



AGES 3-5

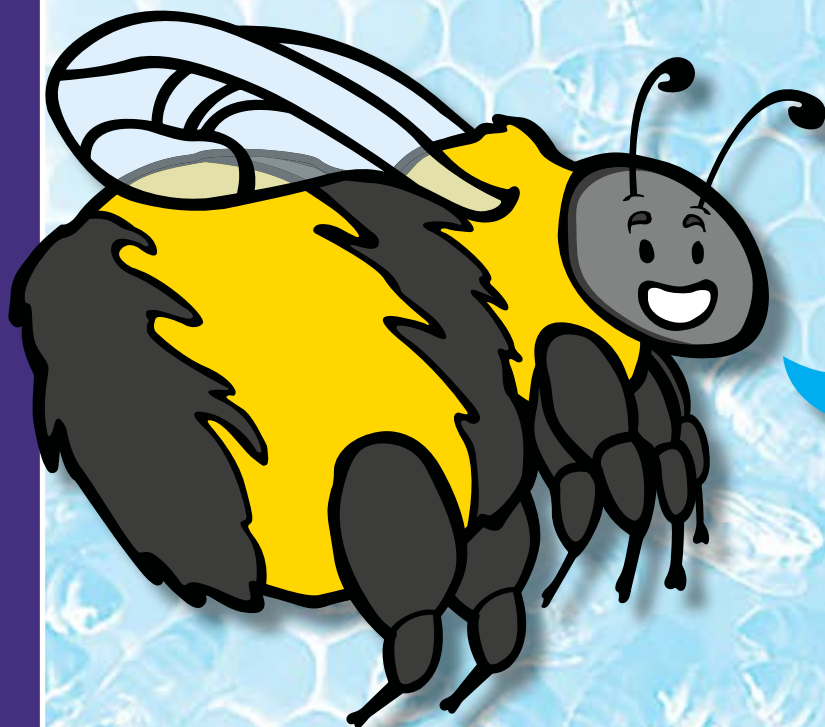
- » LEARNING ABOUT ANIMAL TRACKS
- » EXPLORING HABITATS + HOMES
- » PROTECTING OUR PARKS

# SENSING THE WORLD AROUND US!



## Welcome to BC Parks!

We protect and manage our beautiful provincial parks for future generations, and we're so happy you're here!



Did you know that bumblebees use their senses to connect to the world around them?

Bees have 5 eyes and use their sense of sight to see patterns and to sense light.

## FOR PARENTS + GUARDIANS

This booklet is designed to help you guide your child's experience in a provincial park. It provides activities and ideas to enrich your visit, while leaving space for your child to take the lead. As an adult, enjoy the role of a co-learner and wear the hat of a "gentle guide", rather than an "expert". Child-led adventure is where the magic happens - follow where your child's interests lead, and you may be amazed at the connections you make in the park today!

If you don't finish the booklet, don't worry! Save it for your next park visit - the activities can be done in provincial parks and protected areas across BC.



# WHO ARE YOU?

MY NAME IS

## CHOOSE A NATURE NAME

Choose one of your favourite BC animals, plants, types of weather or natural objects. Pick something in the wild that you love for your special Nature Name.

*Here are some ideas: Porcupine, Salal Berry, Cedar, Cloud, Granite, Salmon, Fern, Leopard Frog.*

Now write and/or draw your Nature Name on your very own wooden medallion!



# ACKNOWLEDGEMENT & GRATITUDE



**I AM HAPPY FOR:**

**Draw a picture of something in the park that makes you happy or find something on the ground that you can trace.**

**I AM GRATEFUL FOR:**



# BRITISH COLUMBIA

**Activity:** BC is a big province! Where are you? Draw an 'X' in the area of the park you are visiting.

Dease Lake

Fort Nelson

**LANGUAGE:**  
Tse'khene  
Danachea  
English: Hello  
**PRONUNCIATION:**  
(dan) (a) [che] (a)

Tse'khene

**LANGUAGE:**  
Dakelh  
Hadih  
English: Hello  
**PRONUNCIATION:**  
[ha] (dih)

Dakelh

Secwepemctsin

Kamloops

Vancouver

Tofino

Victoria

**DID YOU KNOW**  
there are 7 Indigenous language families (and 34 different languages) spoken in BC?

**LANGUAGE:**  
Secwepemctsin  
weyt-k  
English: Hello

**PRONUNCIATION:**  
[wey](t-k)

SENSING THE WORLD AROUND US!



# LEARNING TO BE RESPONSIBLE AND RESPECTFUL

## Responsible Recreation: Remember to Leave No Trace

- Parks can't clean themselves! Remember to take your garbage out.
- Wild animals eat wild things! They don't want your food.
- If everyone took something, there'd be nothing left! Leave things where you find them.
- Wildlife is meant to be wild! Give them space to simply be.





# LEARNING ABOUT ANIMAL TRACKS

French Beach Provincial  
Park, Vancouver Island,  
British Columbia

Photo: Iain Robert Reid

Who made these tracks?  
Can you match the animal to their tracks?



MOOSE



BEAVER



BALD EAGLE



WOLF



WOOD DUCK





# PREPARING FOR THE GREAT OUTDOORS

Our parks are special places to visit, with lots to see and discover. To make sure we all have fun, we need to know how to stay safe!

Silver Lake Provincial Park, British Columbia

Photo: Iain Robert Reid

Are you ready for the weather? The weather can change quickly, and to stay safe it's important to be prepared. Bring extra layers just in case - there's no such thing as bad weather, just bad clothing!



## Activity: Dress for Success

Invite your child to practice clothing charades with you. Take turns miming out different kinds of clothing you might need to be prepared for a visit to the park, depending on the season (e.g. mittens, rain coat, boots, sun hat, etc.) Share ideas of extra layers brought this time, or what you could bring on your next visit to a park to be prepared for change in weather. Explain why the right clothing is important (protection, warmth, safety, etc.).



## DID YOU KNOW...

that grizzly bears can eat up to 90lbs of food in one day?  
That's like eating 270 apples!

that grizzly cubs stay with their mothers for up to 3 years?

that the large hump on a grizzly bear's shoulders is a giant muscle? It helps them with all the digging they do each day!



Plants and mushrooms are food for wildlife! Leave things the way you find them – on the plant or in the ground.

*Please note:* Some plants may be harvested for traditional Indigenous uses. It is important to respect these traditional practices.



### Activity: Let Plants Grow

Invite your child to notice the plants around them. How big are the plants? What colours are they? Are there any berries? Share ideas about why we don't pick plants in the park (e.g. parks are not places to harvest plants, animals need them for food, they may be special plants, we don't know if they are safe to touch, etc.). Be sure to explain it is never safe to eat plants we don't know.

Be aware! Bears live across BC and may live here too. Make some noise or sing a song as you walk to let bears know you're there. You can also look for signs that there may be bears in the area (scat (poop), tracks, claw marks on trees).



### Activity: Sing a Song, Stay Calm

**Invite your child to practice singing or making some noise as they walk to let bears and other wildlife know they are coming.**

*Extension:* Invite your child to imagine you see a bear. Together, practice staying calm, making your bodies big, with arms above your head, moving gently like a tree in the wind, as you back away.



# ENJOYING BC'S BEAUTIFUL BIODIVERSITY

Akamina-Kishinena  
Provincial Park,  
British Columbia

Photo: Iain Robert Reid

What can you see in the park around you?  
Draw things you have seen in the park during your visit!



ANIMALS



PLANTS



BIRDS



INSECTS



FISH



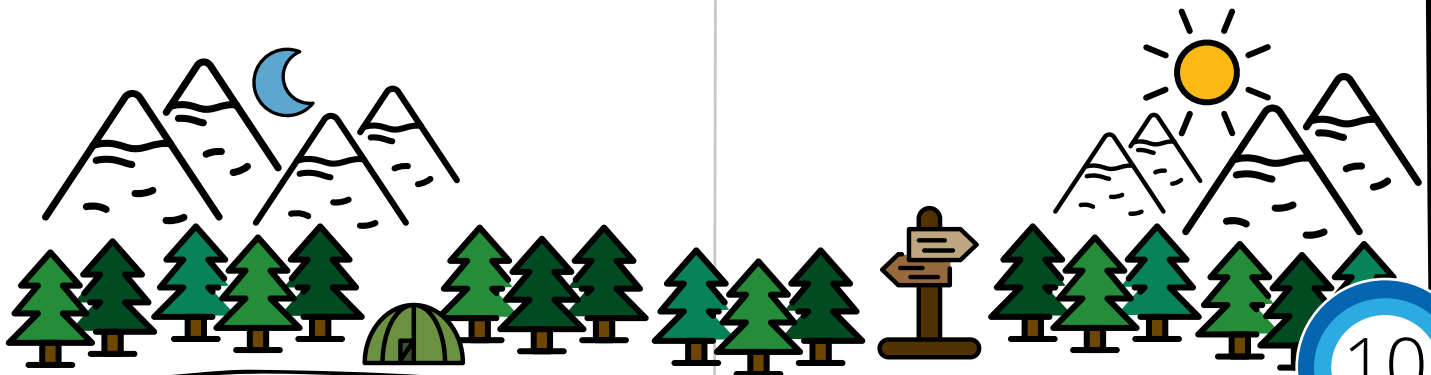
# EXPLORING HABITATS AND HOMES

Pinecone Burke  
Provincial Park,  
British Columbia

Photo: Iain Robert Reid

Where is your home for the night?

Will you be sleeping in your bed at home? Will you be camping in an RV or a tent? Draw your own "habitat" for the night here:





# SENSING THE WORLD AROUND US



## Activity:

Invite your child to collect natural material and items that are already on the ground to play a game of nature tic tac toe! You will need 5 pieces for each player (e.g. 5 pinecones and 5 pebbles), and turn, by turn, you'll try to get 3 objects in a row! Ready, set, go!

**Remember to leave no trace:** After you are done, return these natural materials back to where you found them.

Elk Lakes Provincial  
Park, British Columbia

Photo: Iain Robert Reid

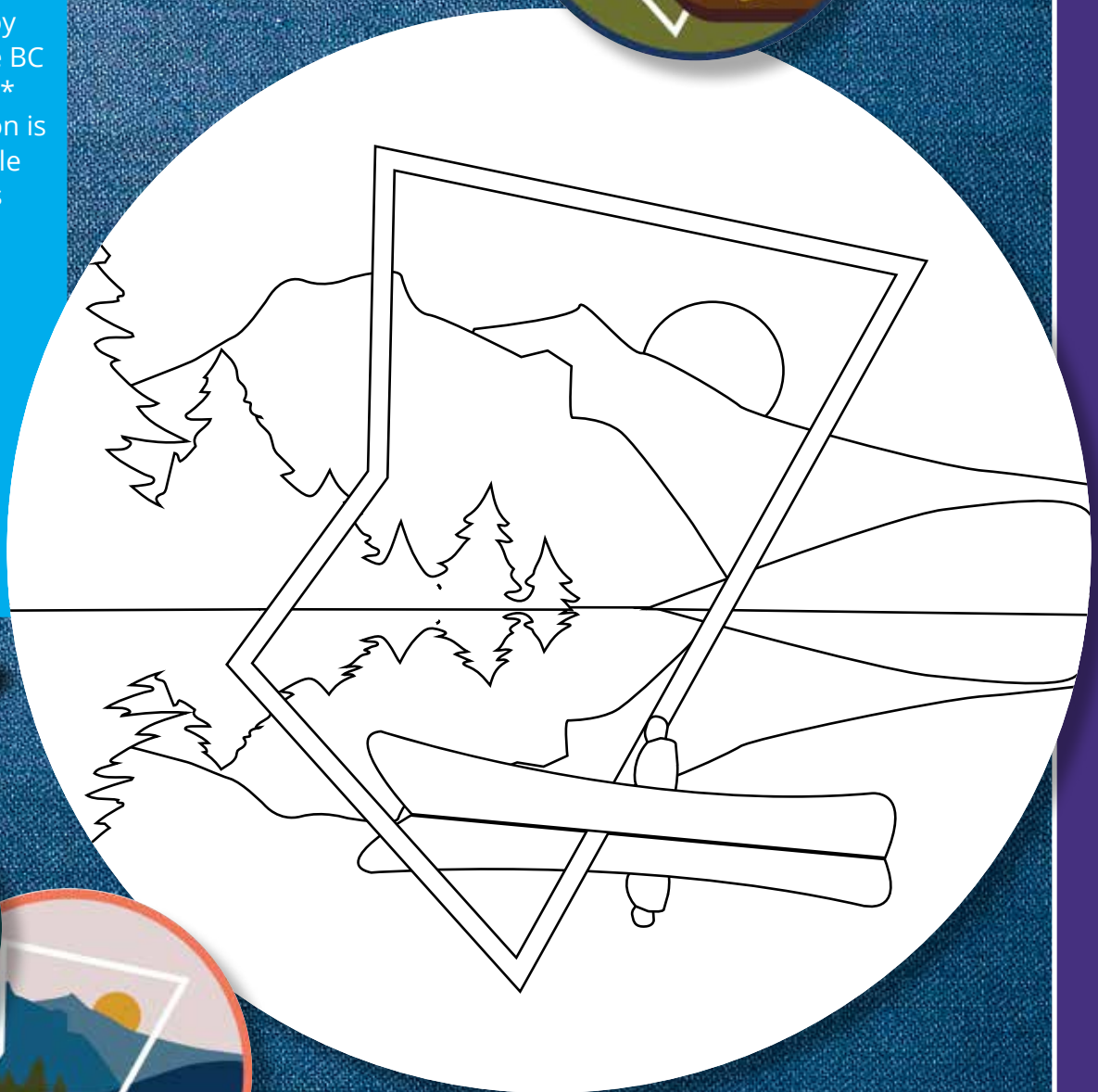




# PROTECTING BC'S COLOURFUL PARKS

BC Parks are home to an incredible amount of animals, plants and history! You can support parks across the province for you and your loved ones to explore and enjoy with the help of the BC Parks Foundation\*.\* BC Parks Foundation is the official charitable partner of BC Parks

Take a moment to colour some of the many treasured outdoor parks and protected areas featured on the BC Parks Foundation patches.



SENSING THE WORLD AROUND US!

12



# DRAW WHAT YOU ARE NOTICING



**SOMETHING I CAN SEE**

**SOMETHING I CAN SMELL**

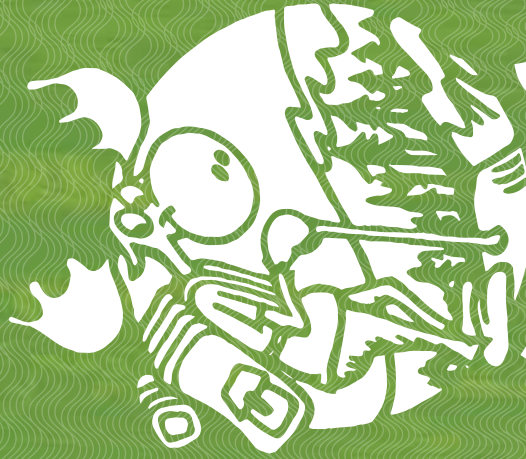
Tunkwa Provincial Park,  
British Columbia

Photo: Iain Robert Reid

**SOMETHING I CAN HEAR**

**SOMETHING I CAN FEEL**





**JERRY'S  
RANGERS**

**We ♥ BC Parks!**

# CERTIFICATE

Once all six stamps have been collected, this certificate signifies that

\_\_\_\_\_ is part of the BC Parks Jerry's Rangers team!

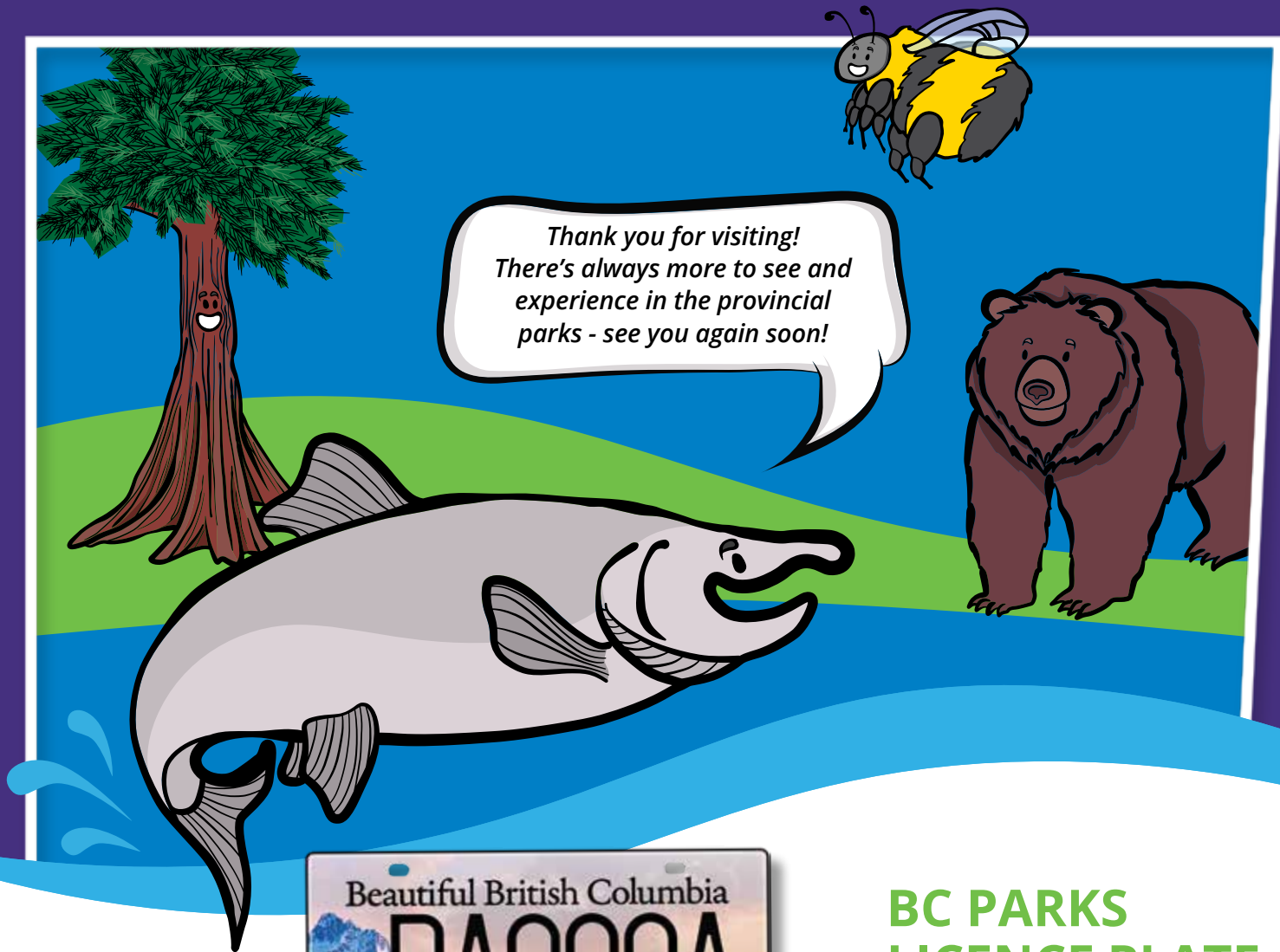
Jerry's Rangers are always working towards becoming better stewards for the beautiful natural parks spaces across British Columbia.

Signed by: \_\_\_\_\_

Date: \_\_\_\_\_







## BC PARKS LICENCE PLATE PROGRAM

Show your pride in British Columbia's natural beauty with a park-themed licence plate! Each BC Parks license plate supports our provincial parks and protected areas. All net proceeds from the sale and renewals of BC Parks plates are reinvested back into provincial parks to support programs and projects related to conservation, community engagement, and Indigenous relations.

This project was funded by the Licence Plate Program.



# BC Parks

This material is owned by the Government of British Columbia and protected by copyright law. It may not be reproduced or redistributed without the prior written permission of the Province of British Columbia.

*Printed on 100% recycled paper with environmentally friendly inks.*

Design by Animikii and Rivers to Ridges Inc. Copyright © 2020, Province of British Columbia. All rights reserved.