

SHUSWAP RIVER ISLANDS PROVINCIAL PARK

PURPOSE STATEMENT AND ZONING PLAN

February 2006

Approved by:



Drew Carmichael
Regional Manager
Environmental Stewardship Division

Date: Feb 14, 2006



Nancy Wilkin
Assistant Deputy Minister
Environmental Stewardship Division

Date: March 26, 2006

Shuswap River Islands Provincial Park Purpose Statement and Zoning Plan

Shuswap River Islands Park's **primary role** is to protect river bottomland cottonwood habitats along the Shuswap River. The 185 hectare park is located 12 kilometres east of Enderby. The park captures small islands, side channels and surrounding low-lying bottomlands along a 3.5 kilometre section of Shuswap River. As one of the few remaining naturally intact sections of the river between Mabel and Mara Lakes, the park is extensively covered in old-growth cottonwood stands with scattered old-growth red cedars and western hemlock. Strips of grassy riparian openings and thickets of shrubby alder and red osier grow along the gravel bars and river edges. There are no known rare plant species in the park. The park contains some of the highest densities of spawning kokanee in the Shuswap River between Mabel and Mara Lakes.

Private lands lie adjacent to the northern and western boundaries of the park and crown forest land extends along the east side. Most of the park area is subject to periodic flooding and consequently remains in an undeveloped natural condition. Such undisturbed habitats are of particular significance to the protected areas system. Cottonwood habitats in the North Okanagan Valley and generally throughout the province are rapidly disappearing through private land developments and forest harvesting.

As a **secondary role** the park maintains a pristine section of river for canoeing and fishing. There is no direct road access to the park and walk-in access involves negotiating thick brush from very rough and overgrown logging roads. Preferred access is via canoe or raft from access points further up the river.

Known Management Issues	Response
A primary concern is to maintain the isolated, natural condition of the park.	<ul style="list-style-type: none"> • No trails or public facilities will be developed in the park. • Coordinate with the Ministry of Forests and Range to keep public vehicle access away from the park. Any new roads should be gated or deactivated after forest management operations are completed.
Cattle from adjacent land occasionally stray into the park.	<ul style="list-style-type: none"> • Seek cooperation of adjacent private land owners to keep cattle out of the park. Establish drift fences at strategic locations in the park.

Zoning

The whole of the protected area is zoned as Nature Recreation.

Protected Area Values and Significance Summary Matrix

Conservation

Representation

Ecosection

Shuswap Basin – 2.5% contribution to protected area system representation. This ecosection is poorly represented (2.2%) in the protected areas system.

Biogeoclimatic subzone/variant

ICH mw2 – contributes .32% of province-wide representation. This subzone/variant is reasonably well represented (7.1%) in the protected areas system.

Special Features

Intact cottonwood habitats.

Rare/Endangered Values

Potential for Screech Owl; requires survey.

Scientific/Research Opportunities

Recreation

Representation

Backcountry

Destination

Travel corridor

Local recreation

Canoeing and fishing

Special Opportunities

Education/Interpretation Opportunities

Cultural Heritage

Representation

Special Feature

Other Management Considerations

Other Designations

Relationship to Other Protected Areas

Skoomkumchuck Rapids Provincial Park and Shuswap River Islands Provincial Park protect key conservation and recreation sections of the Shuswap River between Mabel Lake and Enderby.

Collaborative Management Arrangements

Partnerships

Vulnerability

Relationship to Other Strategies

Okanagan-Shuswap Land and Resource Management Plan (LRMP)

Area

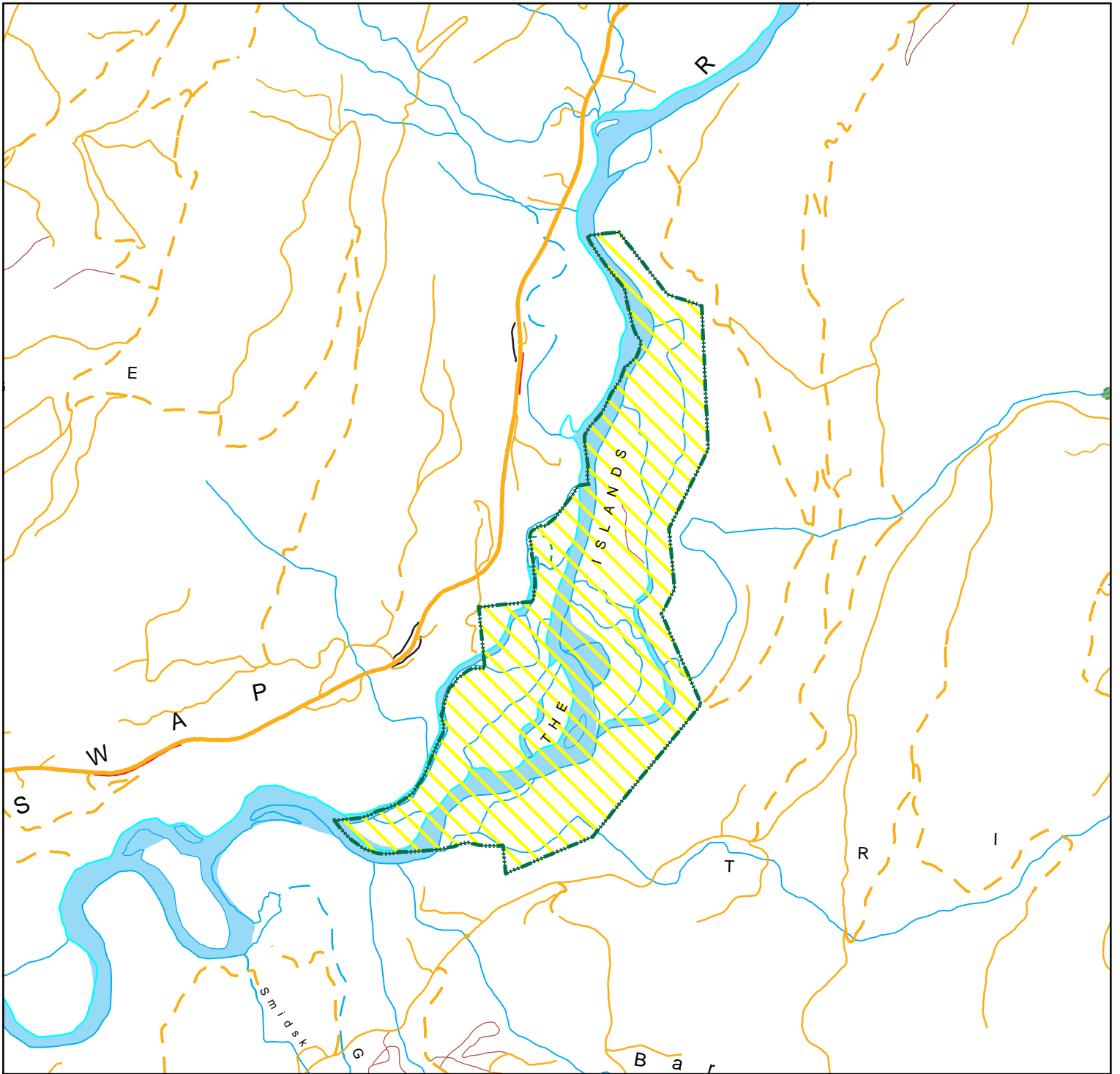
185 hectares

Date of establishment

May 20, 2004

Zoning Map

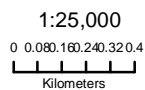
Shuswap River Islands Provincial Park



 Nature Recreation



Produced in Nov 2005 for
Ministry of Environment
by Ministry of Agriculture and Lands
Integrated Land Management Bureau



Projection: UTM Zone 11
Datum: NAD83

This is a visual representation
only and should not be used for
legal purposes