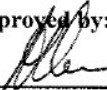


SIKANNI CHIEF CANYON Provincial Park



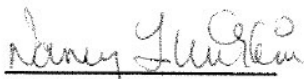
PURPOSE STATEMENT AND ZONING PLAN Peace Region 2006

Approved by:



Andy Ackerman,
Regional Manager
Environmental Stewardship Division
Peace Region

Date: July 13 2006

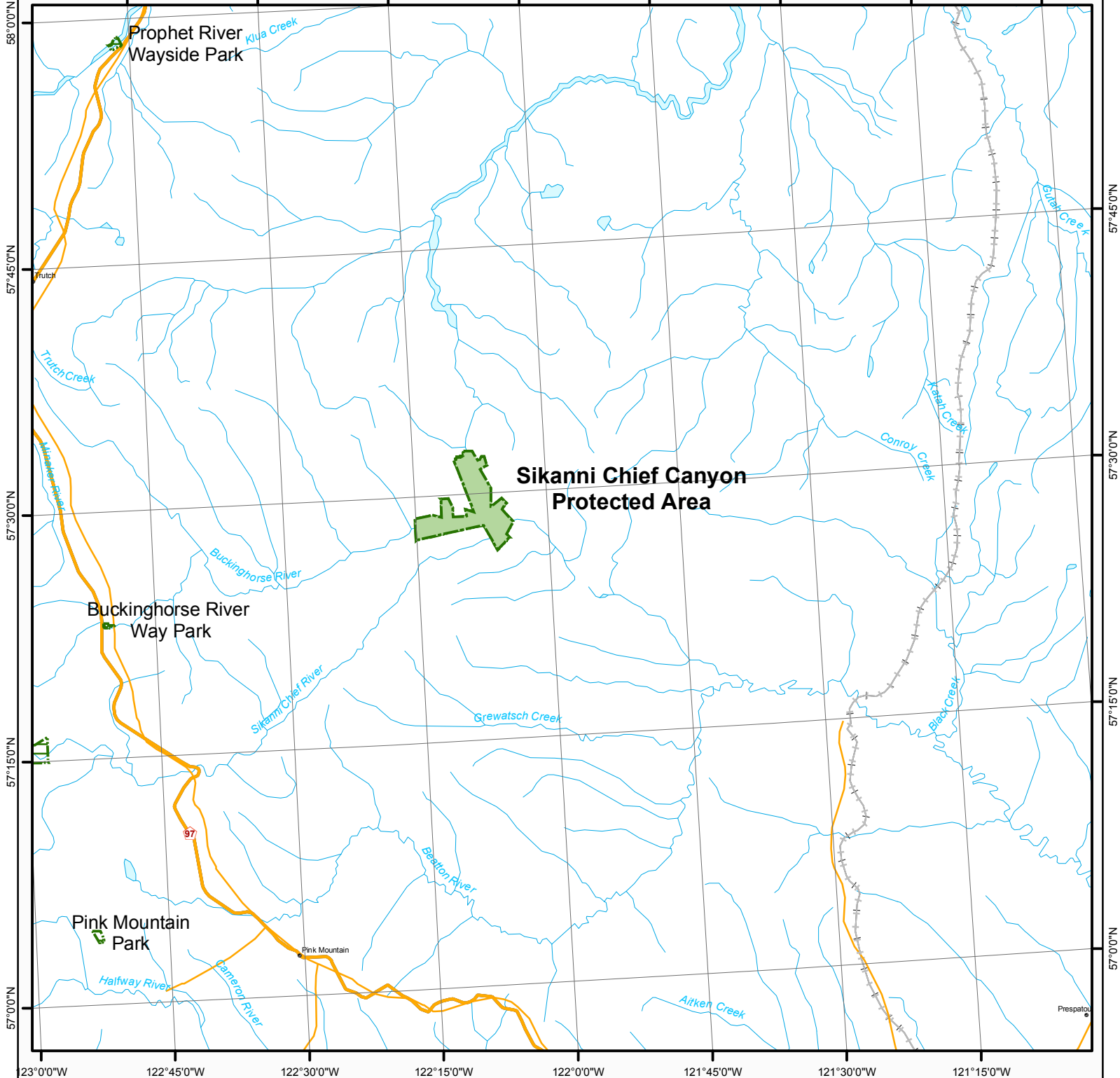


Nancy Wilkin
Assistant Deputy Minister
Environmental Stewardship Division

Date: October 8 2006

Figure 1: Regional Context

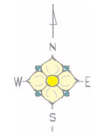
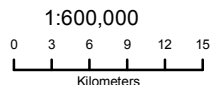
Sikanni Chief Canyon Protected Area



Projection: UTM Zone 10
Datum: NAD83

Produced in June 2006 for
Ministry of Environment
by Ministry of Agriculture and Lands
Integrated Land Management Bureau

- Subject Area
- Other Protected Areas
- Highway
- Road



This is a visual representation
only and should not be used for
legal purposes

SIKANNI CHIEF CANYON PROVINCIAL PARK Purpose Statement and Zoning Plan

Primary Role

The **primary** role of the Sikanni Chief Canyon Class A Provincial Park is to protect portions of the Sikanni Chief Canyon and Buckinghorse River Canyons for the unusual riverine population of mountain goats and other riparian features. The mountain goats reside year round on the steep precipices above the Sikanni Chief and Buckinghorse rivers. This is one of the few places in BC where mountain goats are associated with river canyons in a non-mountainous area. Alluvial stands of white spruce along the Sikanni Chief River are another key feature.

Known Management Issues	Response
The Fort St. John LRMP identified this area suitable for directional drilling for oil and gas.	Work with the Oil and Gas Commission and tenure holders to ensure that any approved directional drilling to access resources under the park considers and protects the park's conservation values.
Oil and gas leases are located on lands surrounded by the park, and may continue to be used	Work with tenure holders to ensure access to and production from the existing leases do not impair park values
Helicopter over-flights to view the goats may have adverse effects on their use of habitat within the park.	<ul style="list-style-type: none"> • Increase monitoring of goats in the park • work with helicopter companies to establish voluntary over-flight guidelines to protect the goats from disturbance.
Park values are poorly known	conduct inventories of flora and fauna in the park as resources permit.
Oil and gas development adjacent to the park may affect protected area values.	Work with the Oil and Gas Commission and tenure holders to ensure that any approved oil and gas exploration and development near the park considers and protects the conservation values in the protected area.

Zoning:

The protected area is zoned Wilderness Recreation to protect the remote and largely undisturbed natural landscape and to provide backcountry recreation opportunities depending on a pristine environment. Motorized boating on the Sikanni River is appropriate, but other motorized access is not. .

Conservation

- Representation
- ecosection Sikanni Chief Canyon represents the Muskwa Plateau ecosection. This ecosection is 3.4% protected throughout the province, of which 5.4% is contained within Sikanni Chief Canyon Provincial Park
- biogeoclimatic subzone/variant Sikanni Chief Canyon contributes 3.2% of the province-wide protection of the Boreal White and Black Spruce, moist warm (BWBSmw2) variant. 2.1% of the total provincial area of this variant is protected.
- Special Feature Unusual mountain goat habitat in a river canyon; alluvial white spruce stands
- Rare/Endangered Values Bull Trout (blue-listed)
- Scientific/Research Opportunities Mountain goat ecology

Recreation

- Representation
Backcountry
Destination
Travel corridor
Local recreation Hunting, fishing, wildlife viewing and boating are all possible in the protected area, although use is limited due to difficult access.
- Special Opportunities
- Education/Interpretation Opportunities

Cultural Heritage

- Representation This protected area lies within the area traditionally used by the First Nations of Treaty 8. Two known archeological sites exist within the protected area consisting of surface lithics.
- Special Feature

Other Management Considerations

- Other Designations

Relationship to other PAs

Collaborative Management Arrangements

This park will, once the agreement is signed, be subject to the Memorandum of Agreement respecting the management of provincial parks between the Government of BC and the Treaty 8 First Nations.

Partnerships

Vulnerability

Relationship to other Strategies

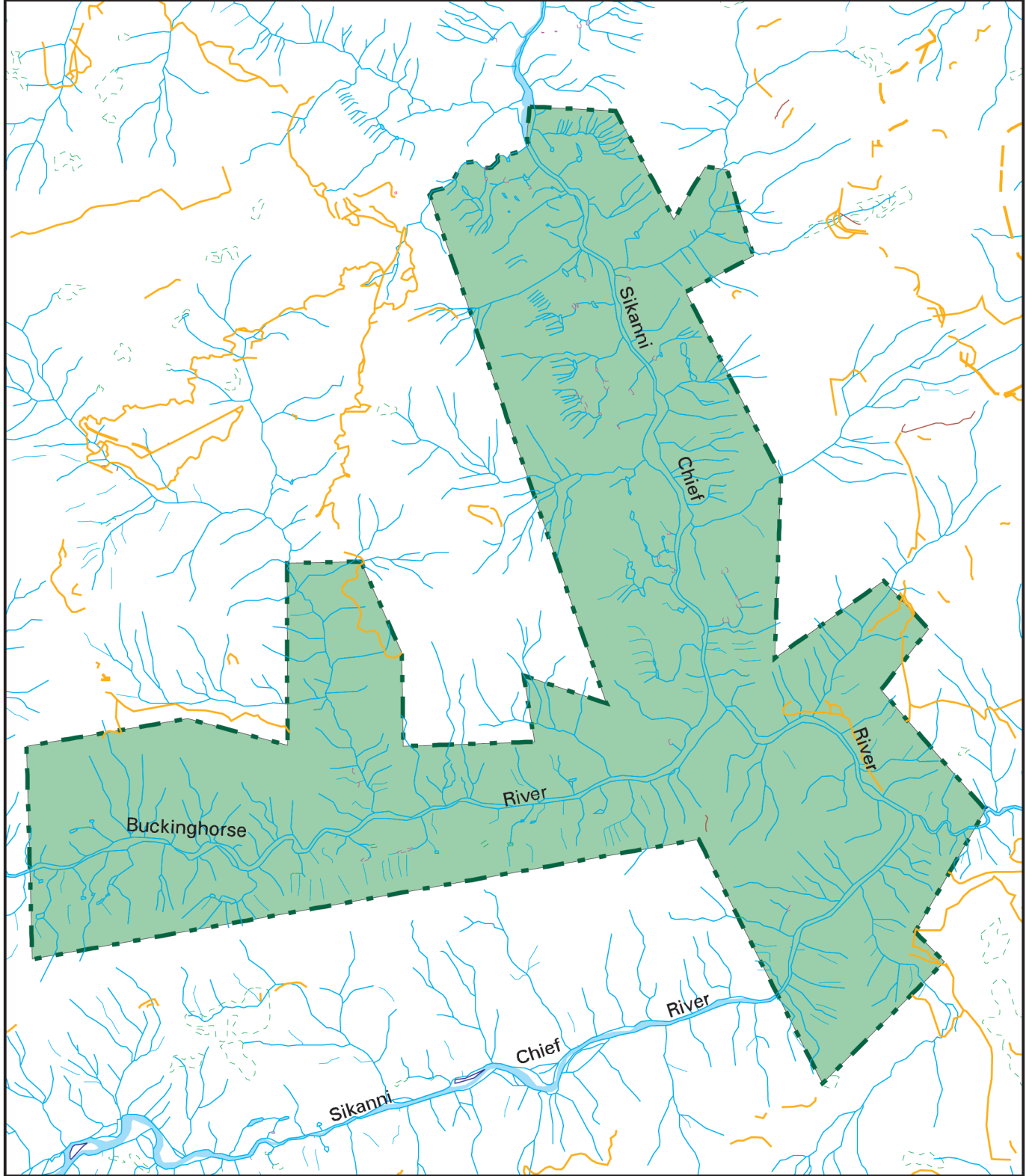
Sikanni Chief Canyon was recommended for protected area status through the Fort St. John Land and Resource Management Plan

Area: 4641 hectares

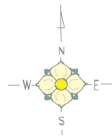
Date of establishment: March 30, 2001



Zoning Map

Sikanni Chief Canyon Protected Area



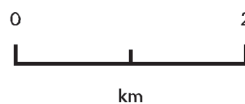
Projection: UTM Zone 10
Datum: NAD83



-  Wilderness Recreation
-  Protected Area Boundary



Produced in Jun 2005 for
Ministry of Water, Land and
Air Protection by MSRM, Business
Solutions Branch



This is a visual representation
only and should not be used for
legal purposes.