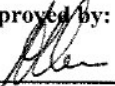


# SIKANNI CHIEF RIVER ECOLOGICAL RESERVE

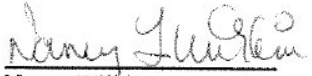


## PURPOSE STATEMENT AND ZONING PLAN Peace Region 2006

Approved by:

  
\_\_\_\_\_  
Andy Ackerman,  
Regional Manager  
Environmental Stewardship Division  
Peace Region

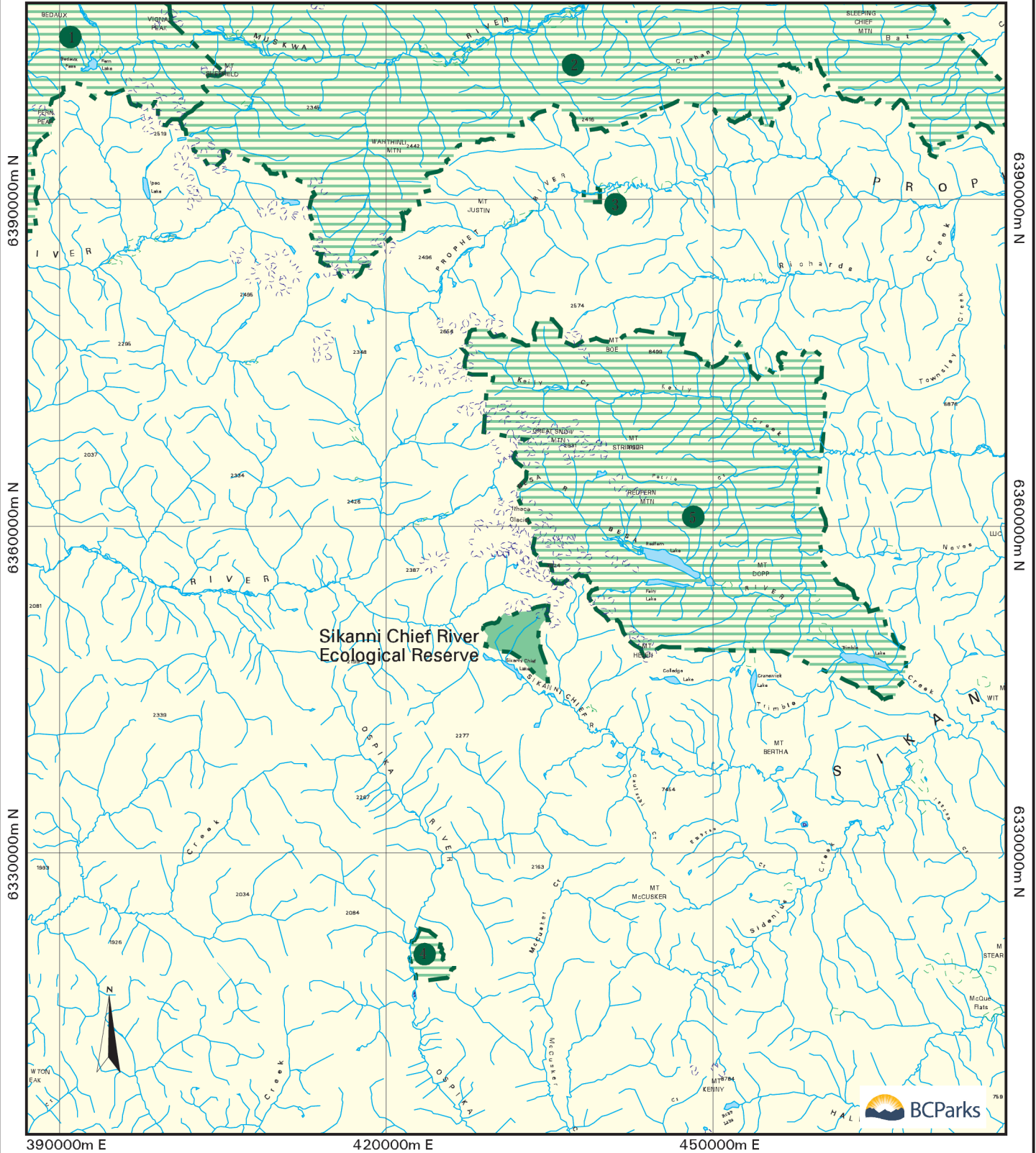
Date: July 13 2006

  
\_\_\_\_\_  
Nancy Wilkin  
Assistant Deputy Minister  
Environmental Stewardship Division

Date: October 8 2006





Figure 1: Regional Context

Sikanni Chief River Ecological Reserve

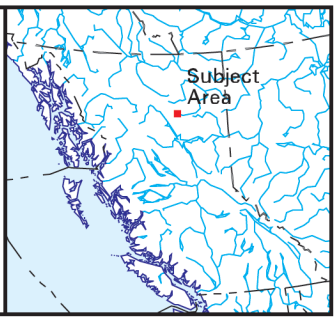


Projection: UTM Zone 10  
Datum: NAD83

This is a visual representation only and should not be used for legal purposes.

	Subject Area
	Other Protected Areas
	Highway
	Road

- Other Provincial Protected Areas
-  Kwadacha Wilderness Park
  -  Northern Rocky Mountains
  -  Prophet River Hotspings Park
  -  Ospika Cones Ecological Reserve
  -  Redfern-Keily Park



Produced in Jan 2006 for Ministry of Environment by MAL, Corporate Information Services Branch

## SIKANNI CHIEF RIVER ECOLOGICAL RESERVE Purpose Statement and Zoning Plan

### Primary Role

The **primary** role of the Sikanni Chief River Ecological Reserve is to conserve the Northern-most occurrence of Englemann Spruce in the Rocky Mountains. The ecological reserve contains pristine flora and fauna typical of the alpine and sub-alpine ecosystems representative of the northern rocky mountains. Alpine wildlife species that exist within the ecological reserve include stone's sheep, mountain goat, grizzly bear, golden eagles and ptarmigan. The ecological reserve is located at the headwaters of the Sikanni Chief River, 190 km NW of Hudson's Hope.

<b>Known Management Issues</b>	<b>Response</b>
Hunting may occur in the ecological reserve, as it is not signed at its boundaries or well known amongst the public	<ul style="list-style-type: none"><li>• Install signs at appropriate points along the boundary of the ecological reserve.</li><li>• Work with guide outfitters and resident hunter community to educate about the presence of the ecological reserve and the restrictions on hunting within its boundaries.</li><li>• Continue reinforce no hunting status on BC Parks website.</li></ul>

### Conservation

- Representation  
- ecosection  The ecological reserve represents a portion of the Eastern Muskwa Ranges ecosection, which is 40% protected across the province. The ecological reserve contains 0.3% of the provincial total.
- biogeoclimatic subzone/variant  The ecological reserve provides representation of the Alpine Tundra subzone and the Spruce-Willow-Birch moist cold (SWB mk) variant. 22.5% of the Alpine Tundra subzone is protected across the province, of which .05% is contributed by Sikanni Chief River Ecological Reserve. The SWBmk variant is also 22.5% protected across the province, of which the ecological reserve contributes 0.04%.
- Special Feature  Northern-most occurrence of Englemann Spruce in the Rocky Mountains
- Rare/Endangered Values
- Scientific/Research Opportunities  Nutrient cycling in subalpine ecosystems, due to presence of slopes of all aspects in the ecological reserve.

### Recreation

- Representation
- Backcountry
- Destination
- Travel corridor
- Local recreation
- Special Opportunities
- Education/Interpretation Opportunities

### Cultural Heritage

- Representation  Unknown. This ecological reserve lies within the area traditionally used by the First Nations of Treaty 8.
- Special Feature

### Other Management Considerations

- Other Designations
- Relationship to other PAs
- Collaborative Management Arrangements  This ecological reserve will, once the agreement is signed, be subject to the Memorandum of Agreement respecting the management of provincial parks between the Government of BC and the Treaty 8 First Nations.
- Partnerships  Recruit volunteer ecological reserve warden to monitor E.R. and post signs.
- Vulnerability
- Relationship to other Strategies
- Area:** 2401 hectares
- Date of establishment:** May 29, 1973