

# SUGARBOWL-GRIZZLY DEN PROVINCIAL PARK AND PROTECTED AREA

## PURPOSE STATEMENT AND ZONING PLAN Omineca Region 2005

Approved by:



Don Cadden,  
Regional Manager  
Environmental Stewardship Division  
Omineca Region

Date: Nov. 4<sup>th</sup> 2005



Nancy Wilkin  
Assistant Deputy Minister  
Environmental Stewardship Division

Date: Oct. 31 2005

**SUGARBOWL-GRIZZLY DEN PROVINCIAL PARK AND  
SUGARBOWL-GRIZZLY DEN PROTECTED AREA  
Purpose Statement and Zoning Plan**

Located one hour east of Prince George on Highway 16, Sugarbowl-Grizzly Den Provincial Park and Sugarbowl-Grizzly Den Protected Area protect an excellent combination of conservation, recreation and cultural values. This 24,756 hectare park and protected area consist of a series of north-facing slopes rising from the Fraser River to the terminus of the Cariboo Mountains.

Sugarbowl-Grizzly Den has a forest composed of mainly old growth western red cedar, western hemlock and Engelmann spruce. There are high caribou habitat values within the park, with a high concentration in the basin on the south side of Viking Ridge. The entire land base above 4,500 feet is excellent caribou habitat. The lower areas are used in the early winter and the high altitude parkland habitats are used in the later winter. The park also includes an important caribou migration corridor which allows an interchange with adjacent caribou habitat. The park and protected area also have high habitat values for the blue-listed grizzly bear.

Sugarbowl-Grizzly Den is the closest alpine recreation area to Prince George and has been very popular since 1976. Raven Lake and Grizzly Den trails are accessed from the Hungary Creek Forest Road as well as the Tumuch trail. Sugarbowl and Viking Ridge trails are accessible from Highway 16, as well as an unmarked route to the Grand Canyon of the Fraser. There is a long history of volunteer community involvement in the park and protected area in both trail construction, maintenance and the building of three backcountry cabins.

The Grand Canyon of the Fraser, near the confluence with Kenneth Creek, is 2.5 miles long. This special feature has historical significance related to the Overlander's journey to the Cariboo gold fields in the 1860's. The Fraser River is designated as a Canadian Heritage River and proclaimed as a BC Heritage River. Like Mount Robson Provincial Park and West Twin, Sugarbowl-Grizzly Den includes both banks of the Fraser River.

The park and protected area lies in the Lheidli T'enneh Traditional Territory.

Two areas were designated as a protected area under the *Environment and Land Use Act* to allow for the construction and maintenance of a road through the protected area to access private land beyond the protected area and the construction and maintenance of a powerline through the protected area in accordance with the directions from the Prince George Land and Resource Management Plan.

**Primary Roles**

The primary roles of the park and protected area are to protect critical habitat for the mountain caribou, which is rated as threatened by COSEWIC and red-listed provincially; to protect the historically significant Grand Canyon of the Fraser; and to provide outstanding backcountry recreation opportunities within one hour of Prince George. Sugarbowl and Viking Ridge Trails are located adjacent to Highway 16, and Raven Lake, Tumuch and Grizzly Den trails are accessed by the Hungary Creek Forest Service Road.

## Secondary Role

The secondary role of the park and protected area is to provide representation of the Upper Fraser Trench Ecoregion and the Interior Cedar-Hemlock very wet cool, Slim variant (ICHvk2) Biogeoclimatic zone.

<b>Known Management Issues</b>	<b>Response</b>
Delineating areas in the Park and Protected Area for hunting, horse/llama use, and mountain biking.	Completion of a Management Direction Statement by end of 2005.
Road access	Work with Ministry of Forests to develop an access strategy to the park and protected area via the Hungary Creek Road
Campsite and trail impacts	Implement the Backcountry Recreation Impact Monitoring (BRIM) process for the Raven Lake and Grizzly Den campsites and trails and monitor, on an ongoing basis. Site rehabilitation and trail relocation may be required in some areas due to existing impacts.
Trail and cabin maintenance and firewood use.	Partner with local recreational clubs and organizations to ensure the ongoing maintenance of the trails and cabins and to ensure trees are not cut for firewood within the park.
Trail construction	Through partnerships, a trail should be constructed to the Grand Canyon of the Fraser River. Because of the topography, sections of the trail will have to be located outside of the park.
Mechanized use	Monitor and manage ATV and snowmobile use into the park and protected area on the Raven/Grizzly and the old Longworth access roads..
Caribou management	Significant parts of Sugarbowl Grizzly occur in high and corridor Ungulate Winter Range for the red-listed mountain caribou. Objectives for management in these areas include: no removal of trees for facilities or infrastructure; no motorized winter use; suppression of natural fires and limited insect control activities. Determine sensitivity to unmotorized backcountry recreational use. Further guidelines developed by the Mountain Caribou Recovery Strategy will also be reviewed and implemented as required.
Fish Stocking	Complete a regional stocking analysis to determine whether the stocking program at Raven Lake should be continued.

## Zoning

Sugarbowl-Grizzly Den Park and Protected Area includes two zones:

- Nature Recreation (to protect scenic values and to provide for backcountry recreation opportunities in a largely undisturbed natural environment) to allow motorized boat access along the Fraser River (approximately 26% of the park).
- Wilderness Recreation Zone (to protect a remote, undisturbed natural landscape and to provide backcountry recreation opportunities dependent on a pristine environment) for the remainder of the park (approximately 74% of the park).

## CONSERVATION

### Representation

- |  |   |  |
|--|---|--|
| <ul style="list-style-type: none"> <li>• ecosection</li> </ul>                     | X | <p>Situated in 3 ecosections: Upper Fraser Trench, McGregor Plateau and Caribou Mountains (34%, 1% and 65% of the park respectively).</p> <p>Upper Fraser Trench. 7.2% of this ecosection is protected; 1 of only 4 areas contributing to the representation of this ecosection; Sugarbowl-Grizzly Den contributes 43.1%, placing it second behind West Twin Park and Protected Area (50.8%)..</p> <p>McGregor Plateau: only 0.6% of this ecosection is protected; Sugarbowl-Grizzly Den contributes minimally (4.9%).</p> <p>Caribou Mountains : 37.8% of this ecosection is protected, Sugarbowl-Grizzly Den contributes 2.8%.</p> |
| <ul style="list-style-type: none"> <li>• biogeoclimatic subzone/variant</li> </ul> | X | <p>Situated in 4 biogeoclimatic subzone/variants: ICHvk2, Engelmann Spruce-Sub-alpine Fir wet cool, Cariboo variant (ESSFwk1), Sub-boreal Spruce very wet cool (SBSvk) and Alpine Tundra – Parkland (ATunp) (approximately 34%, 60%, 5% and &lt;1% respectively)</p> <p>ICHvk2 – 10.4% protected; Sugarbowl-Grizzly Den is the greatest contributor to this representation (65.2%).</p> <p>ESSFwk1 – 13.6% protected; Sugarbowl-Grizzly Den contributes 15.4%.</p> <p>SBSvk – 3.6% protected; Sugarbowl-Grizzly Den contributes 7.2%.</p>  |
| <p><b>Special Feature</b></p>  | X | <p>Grand Canyon of the Fraser</p>  |
| <p><b>Rare/Endangered Values</b></p>   | X | <p>Mountain caribou (red-listed)</p> <p>Grizzly bear (blue-listed)</p>   |

**Scientific/Research Opportunities** X Mountain caribou  
Interior “rainforest” lichens

### RECREATION

**Representation:**

- backcountry X Alpine hiking and backcountry skiing
- destination
- travel corridor Bisected by Highway 16
- local recreation X Closest alpine area to Prince George

**Special Opportunities**

**Education/Interpretation Opportunities**

### CULTURAL HERITAGE

**Representation**

**Special Feature** X Grand Canyon of the Fraser

### OTHER MANAGEMENT CONSIDERATIONS

**Other Designations** X Fraser River is a Canadian Heritage River and a BC Heritage River.

**Relationship to Other PAs** X 22 parks and protected areas were established through the Prince George LRMP. Purden Lake, West Twin, Slim Creek, Ptarmigan, Erg Mountain, Caribou Mountains and Bowron Lakes share similar ecological and locational characteristics.

**Co-operative Management Arrangements** X Park Watch program in place.

**Partnerships** X Prince George Backcountry Recreation Society for facility maintenance (3 backcountry cabins)

**Vulnerability** X The Conservation Risk Assessment Process identified 3 risk factors (the shape, watershed integrity, and the size of the park) for the park and rated them as low significance. Six stressors/threats were identified for the park: Air access, petrochemical spill/potential, and

transportation/utility corridor were rated as highly significant; while motorized recreation, forest harvesting activity, and exotic species introduction were rated as moderately significant.

Mountain caribou populations are in decline.

**Relationship to Other Strategies**

- X Mountain Caribou Recovery Strategy  
Recommended for protected area status by the Prince George LRMP in March 1999.

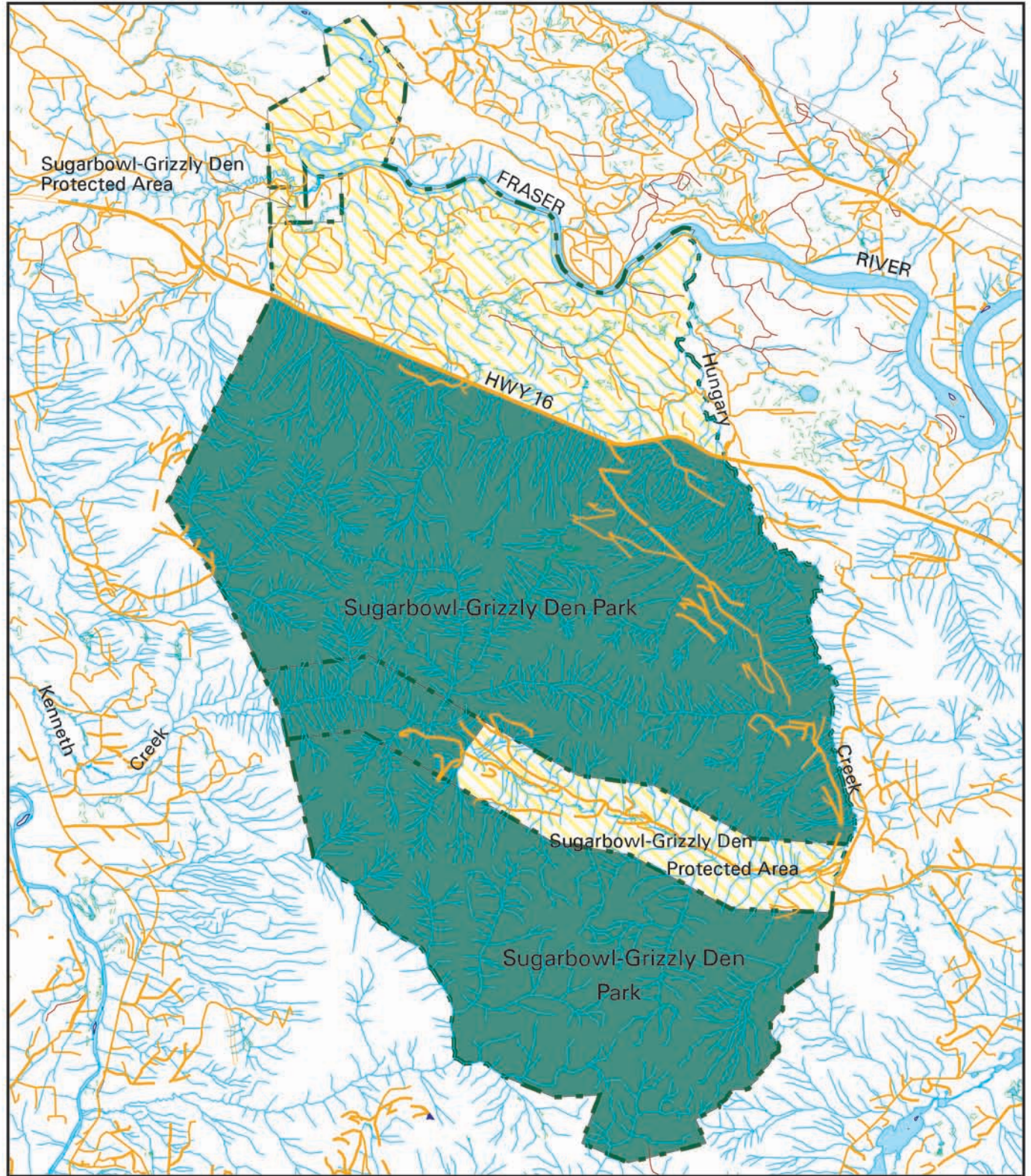
**Area:**

**Park and Protected Area** 24,756 hectares;  
(Protected Area 2,227 hectares)

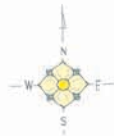
**Date of establishment:**


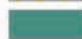

The Park was established on June 29, 2000. The Protected Area was established on January 25, 2001.

# Zoning Map - Sugarbowl Grizzly Den Park and Sugarbowl-Grizzly Den Protected Area



Projection: UTM Zone 10  
Datum: NAD83



-  Nature Recreation
-  Wilderness Conservation
-  Protected Area Boundary



Produced in May 2005 for  
Ministry of Water, Land and  
Air Protection by MSRM, Business  
Solutions Branch

This is a visual representation  
only and should not be used for  
legal purposes.