



## **Tribune Bay Park Addition - What We Heard**

### **Summary Report of Public Input**

**June 2022**



# Tribune Bay Park Addition - What We Heard

## Background

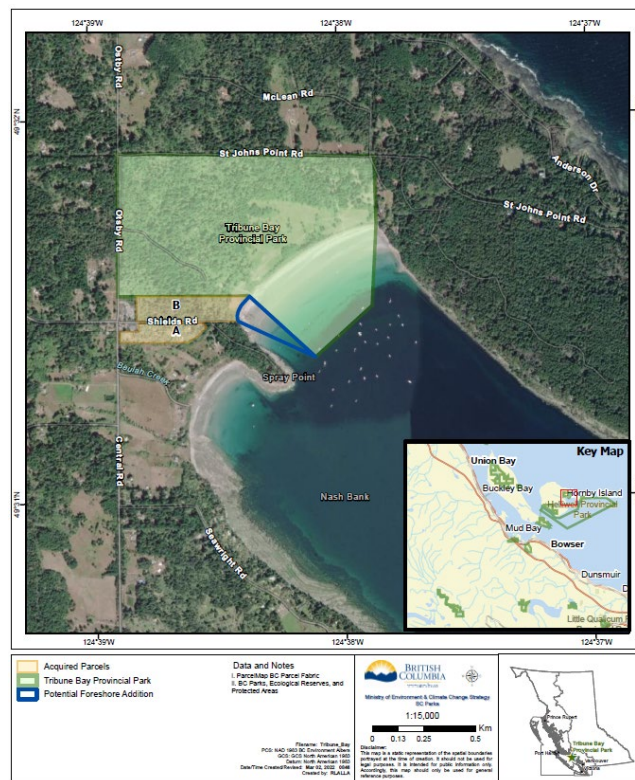
In November 2021, the Province completed the purchase of two private properties on Hornby Island adjacent to Tribune Bay Provincial Park. The two properties were purchased with the goal of adding them to the park system to ensure recreational opportunities and other park values are protected in perpetuity. Parcel A is the existing private Tribune Bay Campground, 3.25 hectare (8.03 acre) in size, which operated with up to 135 campsites. Parcel B is a 6.35 hectare (15.7 acre) forested parcel that borders the existing park, featuring approximately 142 metres (465 feet) of beach frontage.

BC Parks is also considering adding the Crown foreshore in front of Parcel B to the park. Most of the foreshore in Tribune Bay is already within the park.

Adding the existing campground and the adjacent forested parcel to the park will help support and accommodate the growing public pressure for recreation and camping while managing for important ecological values, as well as local use and nature appreciation.

Since a management plan already exists for Tribune Bay Park, management guidance will be developed for these two additional properties that is supplemental to the existing plan.

In December 2021, and again throughout April and May 2022, BC Parks offered public engagement opportunities to collect input from interested individuals to help shape future management guidance for these properties, in preparation for potential future designation as park land.



## Engagement and Consultation Process

To facilitate meaningful opportunities for the public to provide input into the development of management guidance for the future addition to Tribune Bay Park, multiple methods were used to promote participation, using in-person and online approaches.

### *Stakeholder/Partner Engagement*

When the properties were first acquired, BC Parks invited a cross-section of community stakeholders to an on-site information session in December 2021. This early engagement opportunity helped BC Parks assess the level of community interest and to identify key issues and opportunities.

### *Online Engagement*

An online platform at [HelpShapeBC.gov.bc.ca](https://helpshapebc.gov.bc.ca) was used to provide information and updates regarding the additions to Tribune Bay Park. This online engagement opportunity was advertised on the BC Parks website, in the local community newspapers (The First Edition and The Tribune), on posters located throughout the Hornby Island community, and via BC Parks social media channels. Between April 1st and May 8th, 2022, feedback was collected from over 180 individuals through an online survey. Additional responses were collected via email and hardcopy surveys.

### *On-Island Engagement*

Two opportunities to view the recently acquired properties and engage with BC Parks staff were provided on April 13<sup>th</sup> and April 20<sup>th</sup>, 2022. These opportunities were advertised in the local community newspapers (The First Edition and The Tribune) and on posters located throughout the Hornby Island community. Participants asked questions and shared their perspectives on various issues and interests, and had an opportunity to record their thoughts and suggestions while on-site.

### *Indigenous Engagement*

BC Parks is consulting with all First Nations with interests in this area. This consultation is active and ongoing. While the results of this consultation will not be summarized as part of this report, it will inform the development of management guidance for these properties.

## Who We Heard From

| Summary of Participation  |     |
|---|-----|
| Visits to HelpShapeBC.gov.bc.ca/tribune   | 770 |
| Engaged online participants (registrants who interacted with the information or participated in a poll or survey) | 414 |
| Online survey participants  | 184 |
| Hardcopy survey participants (mailed in or dropped-off locally)   | 22  |
| Emailed/written responses   | 4   |
| On-site engagement participants (Dec. 2021, April 2022)   | 50  |

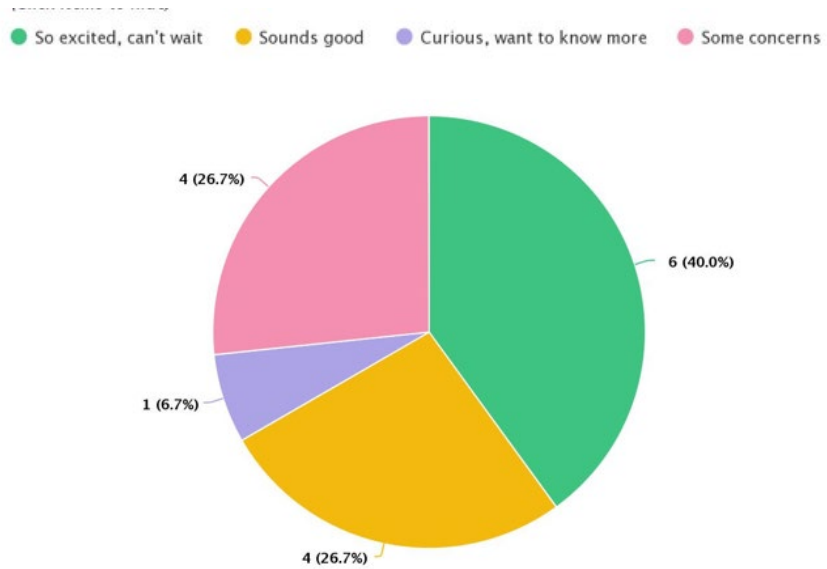
| Postal code data collected from online survey participants |       |
|--|-------|
| Vancouver Island and the Gulf Islands                      | 80%   |
| Lower Mainland   | 15.5% |
| Elsewhere in British Columbia                              | 4%    |
| Elsewhere in Canada  | 0.5%  |

## What We Heard – Public Engagement

The following is a summary of the prevailing themes and topics of interest that emerged from the public engagement process, both online and in-person. The results of the public engagement process will be considered along with the input BC Parks receives from First Nations, feedback from partner agencies, and information received from archaeological and ecological assessments of the properties to develop long-term guidance for the future park addition.

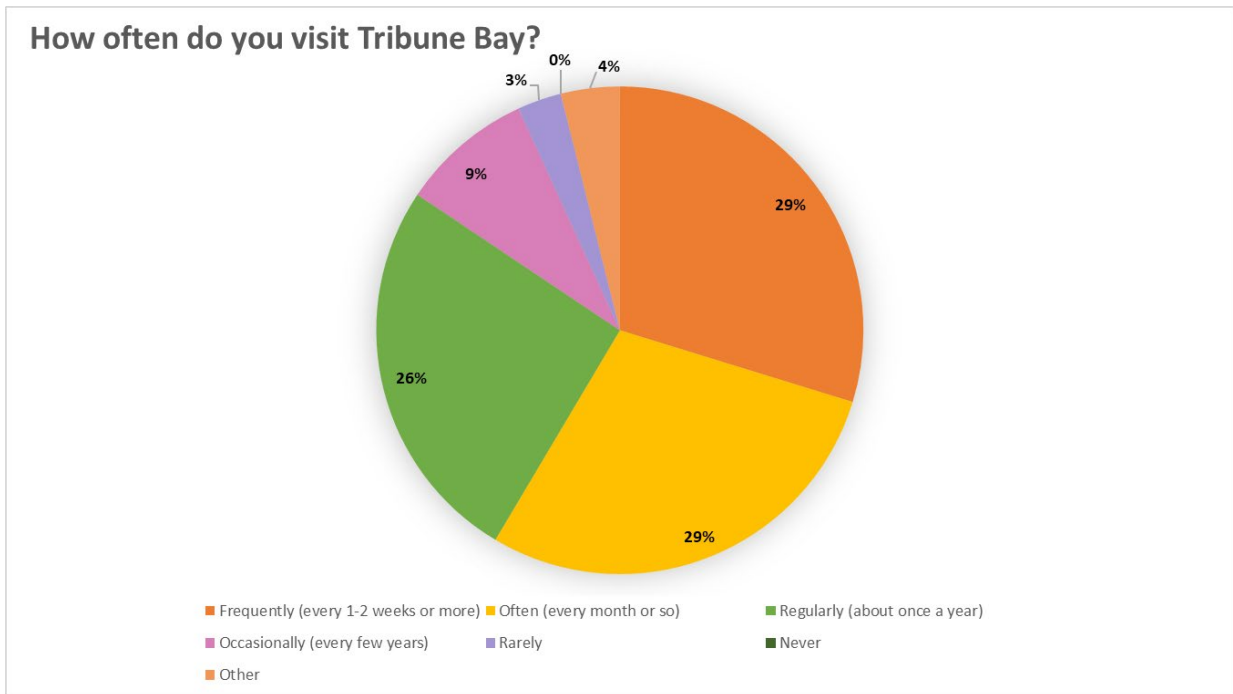
### Quick Poll

The online engagement offered a quick poll question: **How do you feel about a BC Parks camping experience on Hornby Island?** 15 participants completed the quick poll.



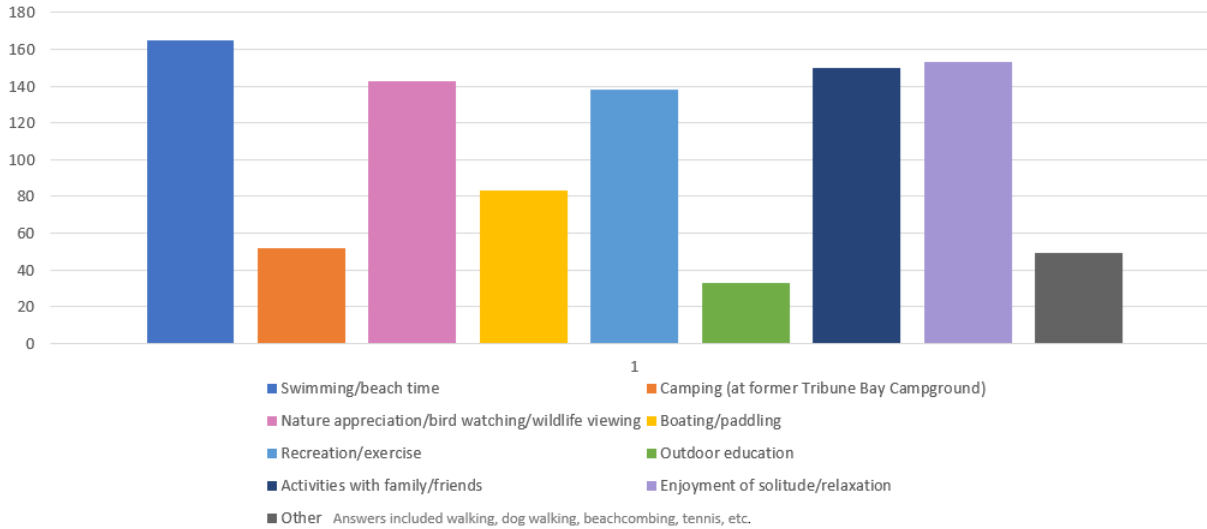
### Survey Respondents

Over half (58 %) of all survey respondents reported visiting Tribune Bay frequently (every 1-2 weeks) or often (every month).



Respondents to the survey reported the activities they enjoyed most included swimming/beach time, nature appreciation, recreation/exercise, enjoyment of solitude/relaxation, and activities with family and friends.

### When you visit Tribune Bay, what activities do you enjoy in the park or the surrounding area?



#### *Prevailing themes from surveys, on-site sessions, letters and emails*

##### Theme - Camping/campground (Parcel A)

Approximately 50% of survey respondents had previously camped in the Tribune Bay Campground. Of those respondents who had camped at the campground before, location and proximity to the beach and Co-op were frequently cited as the most enjoyable parts of the experience.

Some participants who had camped before expressed that they enjoyed the unique character of the campground, while other participants expressed an interest in a more family-friendly atmosphere.

When asked what would have improved their experience, respondents told us that improved and better maintained facilities, particularly better toilet and shower facilities, would most improve the camping experience. Other improvements suggested were less crowding, improved privacy between sites, and better enforcement of rules, particularly regarding noise.

Many participants indicated that they did not wish to see an increase in the overall number of campsites, and noted congestion, noise and ferry traffic as concerns. Some participants expressed interest in some campsites being dispersed onto the newly acquired forested property.

A number of participants expressed an interest in the provision of walk-in, cycle-in, boat-in campsites, to encourage travelling to Hornby by foot, bike, or boat rather than by vehicle. Limiting the number of large RV sites was also suggested as an option to mitigate pressure on the ferries.

Other suggestions included extending the “shoulder season” for camping (more spring and fall options) and to require reservations during the summer months to minimize island visitors unable to find accommodation.

#### Theme – Forested Property (Parcel B)

Of the participants who commented on the forested property, some felt it may be appropriate to disperse some campsites to this property to decrease overall camping density. Some expressed an interest in maintaining the property in as natural a condition as possible.

There was also interest in minor trail development, such as connecting the campground to the beach and park off Shields Road, and a loop walking trail.

#### Theme – Ecology/Conservation

Some participants expressed an interest in maintaining and improving the ecology of the properties, including improved hydrology to address wet, muddy sites.

A number of participants are concerned about invasive species and the protection of native species.

Some participants suggested green initiatives in the campground, such as water conservation, rainwater catchment, recycling program, and solar generators.

There was considerable interest in the topic of campfires including suggestions to ban campfires, reduce the number of fire rings or offer communal fire rings. It was also noted that fires often occur on the beach. Local residents mentioned putting out fires on early-morning beach walks. Some participants raised concerns about air quality as well as wildfire risk.

A few participants expressed an interest in more opportunities to educate the public about the park’s natural and cultural values.

#### Foreshore and beach

Of those who commented on the proposal to add the foreshore in front of Parcel B to the park, all but one was supportive. Some participants expressed concern about the marine environment and eelgrass habitat. Although boats are generally moored outside the foreshore, concerns were raised about the number of boats in the bay, effluent from boats, and the potential for conflict between boats and swimmers in the foreshore. Some of those comments included suggestions that moorage should not be allowed in the eelgrass area, and that there should be a non-motorized marine zone along the beach.

Some participants noted that the proposed foreshore addition is a popular area for dog-walking and expressed concern if that would change. There was some level of interest in maintaining an area on the beach where some activities are allowed which are not permitted throughout the rest of the park’s foreshore (e.g., dogs and fires). However, others expressed concern about the confusion that is caused by different rules on different parts of the beach and were in favour of a consistent approach to visitor use management throughout the beach (and park).

### Dogs in the park

Many local residents reported using the beach to walk their dogs, particularly in fall/winter, and/or early mornings. Many of those participants want an area where dogs are permitted on the beach in the existing and future park.

A number of participants also expressed a preference for not allowing dogs on the beach, and the importance of dogs being on a leash in the park, citing negative experiences and interactions with dogs, and concerns regarding dogs chasing birds.

Of those participants who commented on dogs in the park or future park addition, many expressed a willingness to consider creative solutions to address this challenge, such as temporal or seasonal restrictions, or a designated “on-leash dog area”.

### Trails and other facilities

Some participants commented on the importance of walking trails and suggested that the acquired forested property would provide opportunities for additional trails, particularly an off-road connector from Shields Road to the beach and existing park.

### Other common themes

Many participants expressed a strong connection to Tribune Bay Park and the pleasure they derive from visiting the park, whether daily or annually. Many participants noted that they are pleased that these additional lands have been acquired by BC Parks and have an expectation that they will be well-managed for future generations.

Many local participants expressed concern about the increasing number of people visiting Hornby Island in the summer months and noted various impacts, from ferry congestion to crowded facilities.

## What's Next

The results of the various opportunities for public input will be reviewed and considered along with the results of our consultation with First Nations and the information gathered from the archaeological and environmental assessment reports. The next step is the development of draft management guidance, which is intended to provide high level advice to inform development and support ongoing management of the park addition. The draft management guidance will be shared with First Nations as well as the Islands Trust and Comox Valley Regional District, and posted to the Help Shape BC website with an opportunity for the public to provide feedback. Check back to the Help Shape BC website later in the summer for updates on this project.