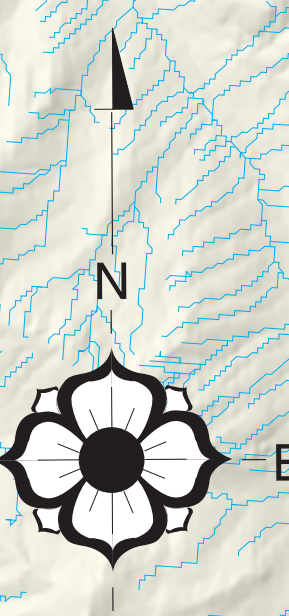


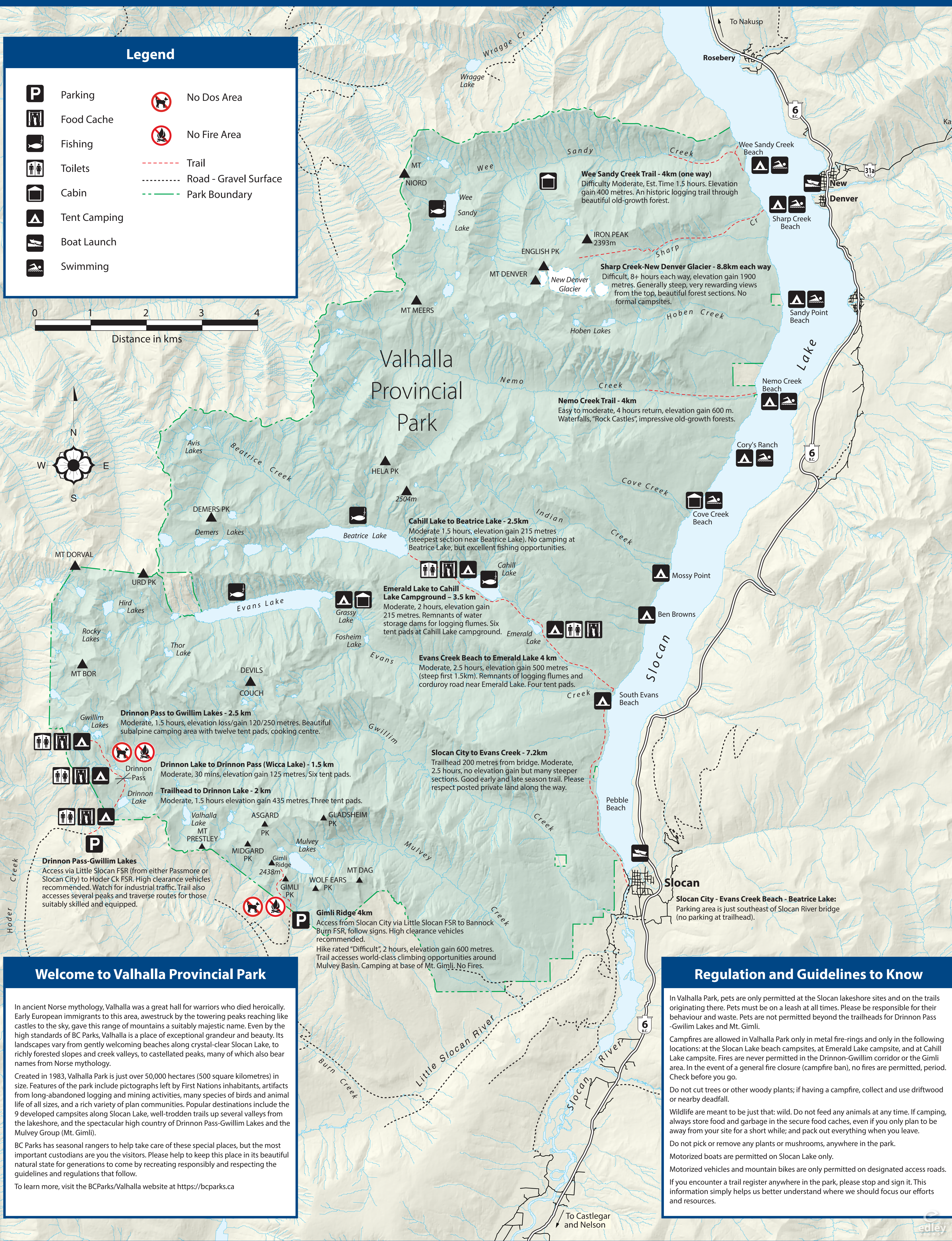
Valhalla Provincial Park

Legend

- | | |
|--------------|-----------------------|
| Parking | No Dos Area |
| Food Cache | No Fire Area |
| Fishing | Trail |
| Toilets | Road - Gravel Surface |
| Cabin | Park Boundary |
| Tent Camping | |
| Boat Launch | |
| Swimming | |



Valhalla Provincial Park



Welcome to Valhalla Provincial Park

In ancient Norse mythology, Valhalla was a great hall for warriors who died heroically. Early European immigrants to this area, awestruck by the towering peaks reaching like castles to the sky, gave this range of mountains a suitably majestic name. Even by the high standards of BC Parks, Valhalla is a place of exceptional grandeur and beauty. Its landscapes vary from gently welcoming beaches along crystal-clear Slocan Lake, to richly forested slopes and creek valleys, to castellated peaks, many of which also bear names from Norse mythology.

Created in 1983, Valhalla Park is just over 50,000 hectares (500 square kilometres) in size. Features of the park include pictographs left by First Nations inhabitants, artifacts from long-abandoned logging and mining activities, many species of birds and animal life of all sizes, and a rich variety of plant communities. Popular destinations include the 9 developed campsites along Slocan Lake, well-trodden trails up several valleys from the lakeshore, and the spectacular high country of Drinnon Pass-Gwillim Lakes and the Mulvey Group (Mt. Gimli).

BC Parks has seasonal rangers to help take care of these special places, but the most important custodians are you the visitors. Please help to keep this place in its beautiful natural state for generations to come by recreating responsibly and respecting the guidelines and regulations that follow.

To learn more, visit the BCParks/Valhalla website at <https://bcparks.ca>

Regulation and Guidelines to Know

In Valhalla Park, pets are only permitted at the Slocan lakeshore sites and on the trails originating there. Pets must be on a leash at all times. Please be responsible for their behaviour and waste. Pets are not permitted beyond the trailheads for Drinnon Pass-Gwillim Lakes and Mt. Gimli.

Campfires are allowed in Valhalla Park only in metal fire-rings and only in the following locations: at the Slocan Lake beach campsites, at Emerald Lake campsite, and at Cahill Lake campsite. Fires are never permitted in the Drinnon-Gwillim corridor or the Gimli area. In the event of a general fire closure (campfire ban), no fires are permitted, period. Check before you go.

Do not cut trees or other woody plants; if having a campfire, collect and use driftwood or nearby deadfall.

Wildlife are meant to be just that: wild. Do not feed any animals at any time. If camping, always store food and garbage in the secure food caches, even if you only plan to be away from your site for a short while; and pack out everything when you leave.

Do not pick or remove any plants or mushrooms, anywhere in the park.

Motorized boats are permitted on Slocan Lake only.

Motorized vehicles and mountain bikes are only permitted on designated access roads.

If you encounter a trail register anywhere in the park, please stop and sign it. This information simply helps us better understand where we should focus our efforts and resources.