



Yaaguun Gandlaay Management Plan

July 2011



Council of the
Haida Nation



Cover photo: Berry Wijdeven

Foreward

"Oh the Cedar tree!

*If mankind in his infancy
had prayed for the perfect substance
for all material and aesthetic needs,
an indulgent god could have provided
nothing better. Beautiful in itself,
with a magnificent flared base
tapering suddenly to a tall, straight trunk
wrapped in reddish brown bark,
like a great coat of gentle fur,
gracefully sweeping boughs,
soft feathery fronds of grey green needles."*

From "Out of the Silence", by Bill Reid (1971)

Table of Contents

Foreward	i
Table of Contents	ii
1.0 Introduction	1
1.1 Management Plan Purpose	1
1.2 Planning Area.....	1
1.3 Planning and Policy Context	5
1.4 Planning Process.....	6
2.0 Values of Yaaguun Gandlaay	7
2.1 Significance and Role in the Protected Areas System	7
2.2 Cultural Heritage.....	7
2.3 Natural Heritage	8
2.4 Recreation.....	9
2.5 Respectful Use of Natural Values	9
3.0 Management Direction	10
3.1 Vision	10
3.2 Management Issues, Strategies and Performance Measures.....	10
3.3 Zoning	16
4.0 Plan Implementation	18
4.1 Implementation Resources	18
4.2 Priority Implementation	18
4.3 Reporting	18
4.4 Management Plan Review.....	18
Appendix 1 – Appropriate Uses Chart	21
Appendix 2 – Heritage Special Feature Sites	23
Figure 1. Regional Context Map	3
Figure 2. Yaaguun Gandlaay Map	4
Figure 3. Yaaguun Gandlaay Management Zone Map.....	17

1.0 Introduction

The Haida Nation and the Province of British Columbia have a dispute of title over all of Haida Gwaii, but through planning and negotiations the Haida Nation and the province have taken steps towards reconciliation of interests.

Yaaguun Gandlaay is now formally protected by both the Haida Nation as a Haida Heritage Site and the Province of British Columbia as a conservancy. For the purposes of this management plan, the area will be referred to as Yaaguun Gandlaay. Other areas established as both Haida Heritage Sites and conservancies will be referenced as protected areas in this document. The Haida Nation and the province through their respective authorities are now working together in managing this area.

This management plan does not have a complete or comprehensive listing of all cultural features or cultural inventory in the area. There are far more cultural features, many that are not inventoried, and other cultural values which are held in secret by the Haida Nation.

Preparation of this management plan for Yaaguun Gandlaay¹ has been jointly undertaken by the Council of the Haida Nation and the Province of British Columbia's Ministry of Environment (hereafter referred to as the "Parties").

1.1 Management Plan Purpose

The purpose of this management plan is to:

- establish the vision, long-term strategic direction, guidance, and acceptable uses for Yaaguun Gandlaay;
- ensure that any activities are respectful of the natural values and not in conflict with Haida social, ceremonial and cultural uses;
- ensure protection for lands and seas in their natural state;
- describe the background and legal context of Yaaguun Gandlaay; and,
- manage visitor use.

1.2 Planning Area

Yaaguun Gandlaay has been used by Haida people and has given them life since time immemorial. The Yakoun River is considered the River of Life by the Haida.

Yaaguun Gandlaay is located on the north end of Yakoun River, on Graham Island, Haida Gwaii, immediately southeast of the community of Port Clements (Figure 1). It is part of an archipelago-wide system of protected areas.² In total, half of the land base of Haida Gwaii is

¹ Phonetic pronunciation is "Yaagoon G'andlaay"

² That includes Gwaii Haanas, several provincial parks and ecological reserves, and ten other protected areas.

now in protected status. The terrestrial component of Yaaguun Gandlaay covers 2,456 hectares. It includes a portion of the Florence Creek watershed and a portion of the Canoe Creek watersheds. The elevation range is from sea level to 109 meters.

A marine component/foreshore area has been delineated by a joint Haida Nation and Province of British Columbia process that covers an area of 232 hectares³. Boundaries for the marine portion of the protected area are brought forward first by Order in Council, then by legislation to ensure equal protection across the terrestrial and marine components. This management plan will provide direction for this marine area as well.

Yaaguun Gandlaay includes the marine intertidal area known as Yakoun Bay, which is located on the south shore of Masset Inlet (Figure 2). Several forest service roads traverse the area and provide access for fishing and hiking but are exempted from Yaaguun Gandlaay.

Kiid k'yaas (or the Golden Spruce tree), grew on the west bank of the Yakoun River. The site is tied to an ancient Haida story of a village that saw winter in midsummer. All were lost except an old man and a little boy who did not heed his grandfather's words and turned into a tree. A popular walking trail was developed from a nearby road that allowed visitors to view the tree. Regrettably, in 1997 an individual cut the tree down, but the site remains culturally significant.

Within Yaaguun Gandlaay, the Haida Forest Guardian program constructed a fenced enclosure for the study of natural regeneration free of the effect of deer browsing on forest ecology.

Yaaguun Gandlaay is an internationally significant estuary important for migratory and overwintering waterfowl. Additionally, high quality nesting and foraging habitat for Northern goshawks and suitable nesting habitat for Marbled Murrelets are present.

There are two other protected areas in the vicinity of Yaaguun Gandlaay. The southern edge of Kamdis is less than 10 kilometres to the northeast, and Yaaguun Suu (which protects the headwaters of the Yakoun River watershed), is located approximately 35 kilometres upstream to the south.

Several forest service roads cross Yaaguun Gandlaay. They provide all season access to the interior of Graham Island from Port Clements and are also utilized for access to recreational activities such as hiking and fishing on Yakoun River. The trailhead access point for walking the 1.5 kilometre long Golden Spruce Trail is reached by the QC Mainline gravel road 5 kilometres south of Port Clements. The south, east and western sides of Yaaguun Gandlaay border on Tree Farm Licence (TFL) 60 which has active forest harvest operations.

³ All navigation and activities related to navigation (including within any marine protected areas established by provincial legislation) are managed by Transport Canada mainly through the *Canada Shipping Act*, other federal statutes and international treaties.

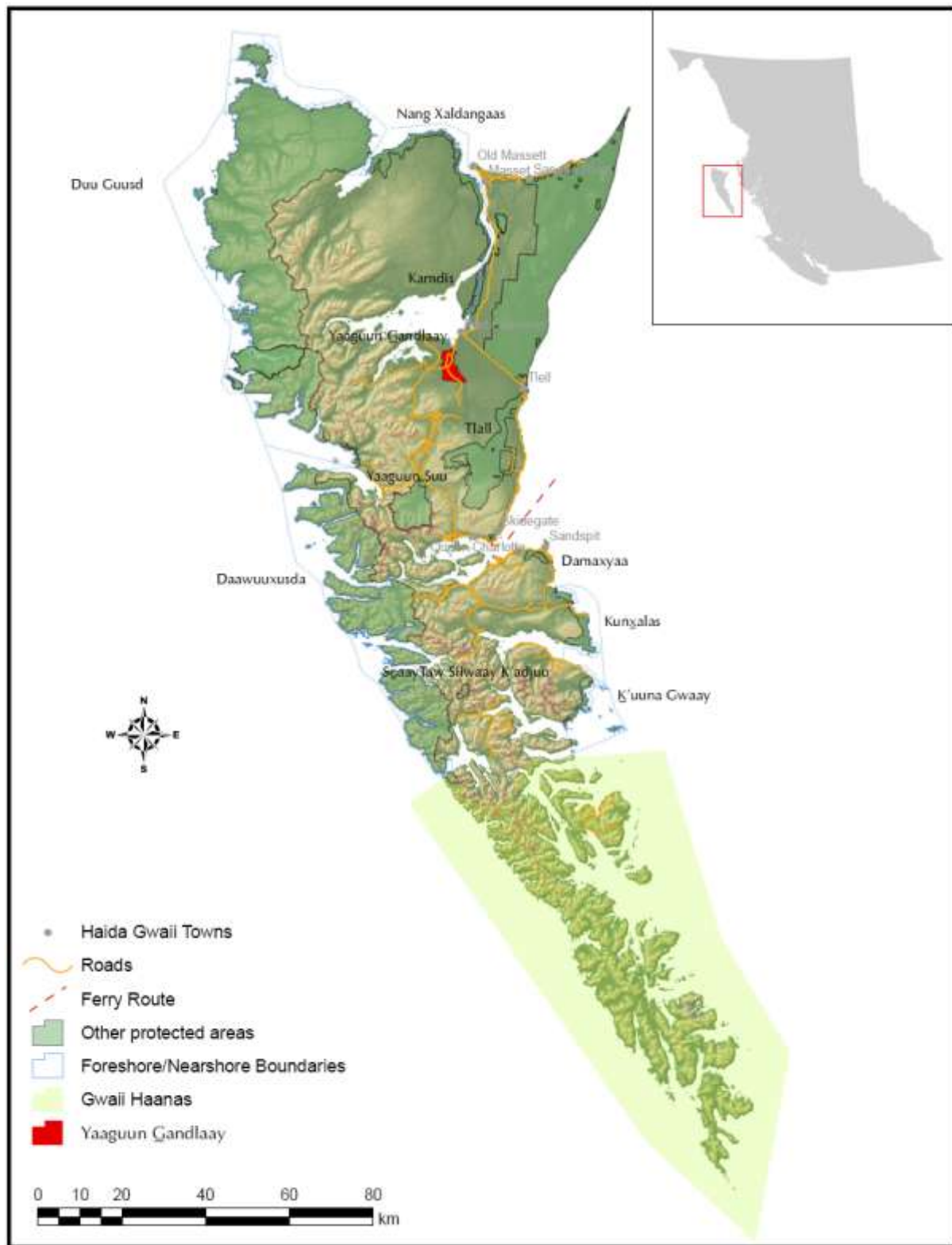


Figure 1: Regional Context Map

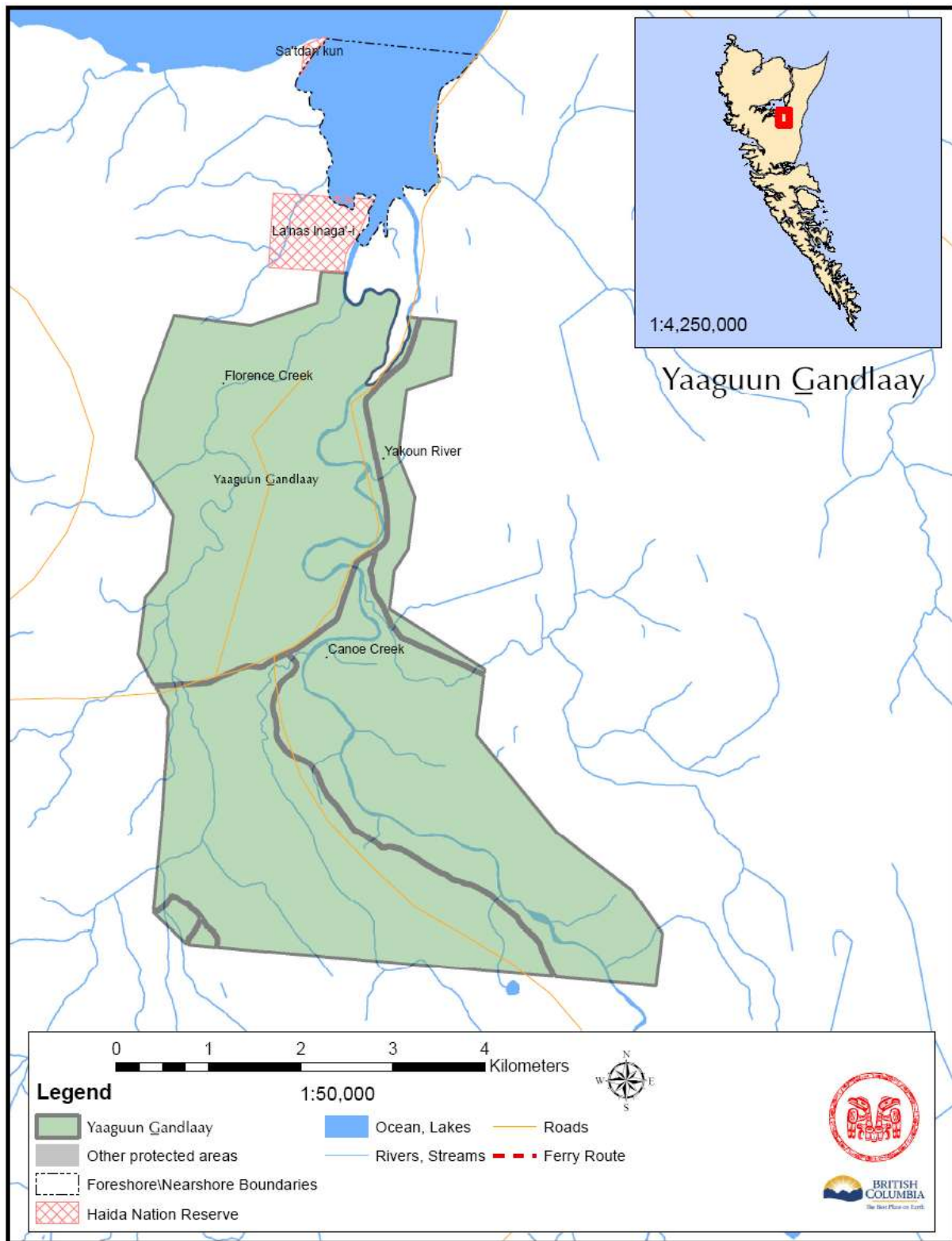


Figure 2. Yaaguun Gandlaay Map

1.3 Planning and Policy Context

The Parties acknowledge each other's respective authorities and are cooperating in the management of Yaaguun Gandlaay. The Haida Nation and the Province of British Columbia have agreements on land use and reconciliation and use their respective lawmaking authorities to enact this management plan. For example, permits are to be jointly reviewed and adjudicated as per processes such as the Solutions Table that are consistent with existing agreements between the Haida Nation and the Province of British Columbia. Additionally, an appropriate government to government forum will be utilized to address collaborative management of the protected areas.

According to archaeological evidence, Yaaguun Gandlaay has been occupied for at least 10,000 years by the Haida people although Haida oral history indicates much longer.

Yakoun Bay was identified by the Province of British Columbia as a Goal 2 Study Area under the Protected Areas Strategy in 1996 due to the international significance of the estuary for migratory and overwintering waterfowl and salmonid habitat.

In 2004, the Haida Land Use Vision based on the principles of Yah'guudang (respect) was put forward by the Council of the Haida Nation to guide deliberations towards a sustainable land use plan for Haida Gwaii. In 2007, the Haida Gwaii Strategic Land Use Agreement (SLUA) supported the Haida Land Use Vision which included the protection of Yaaguun Gandlaay.

The SLUA stated that the new protected areas were to be set aside for cultural, spiritual, ecological, and recreation purposes, and the areas were to be maintained for the benefit, education and enjoyment of present and future generations. The agreement was formally signed off by the Haida Nation and the Province of British Columbia on December 12, 2007.

On December 17, 2008, the Province of British Columbia passed Order in Council No. 977/2008 which established the terrestrial component of Yaaguun Gandlaay. On October 29, 2009, Yaaguun Gandlaay Conservancy was named and described in legislation by passing and providing Royal Assent to Bill 10 — 2009 (*Protected Areas of British Columbia Amendment Act, 2009*).

The Kunst'aa guu – Kunst'aayah Reconciliation Protocol, was signed by the Haida Nation and the Province of British Columbia on December 11, 2009. On June 3, 2010, Bill 18 — 2010, entitled the *Haida Gwaii Reconciliation Act*, received Royal Assent. This bill contains amendments that have implications to protected area planning and management on Haida Gwaii. This management plan is consistent with the intent of the *Haida Gwaii Reconciliation Act*.

In October 2010, the Haida Nation, at the Annual House of Assembly, adopted the KaayGuu Ga ga Kyah ts'as – Gin 'inaas 'laas waadluwaan gud tl'a gud giidaa (Haida Stewardship Law). The purpose of the Haida Stewardship Law is to ensure the well being of Haida Gwaii and create an economy that is respectful of the land, culture and people through establishing

structures to manage the forests and the lands, which include the manner in which humans interact with the natural world. This management plan is consistent with the intent of the Haida Stewardship Law.

1.4 Planning Process

The Parties initiated management planning for Yaaguun Gandlaay in the fall of 2009 as part of a broader effort to prepare management plans for all eleven new protected areas on Haida Gwaii.

Area descriptions were developed from available information for each protected area to identify important cultural and natural values, as well as recreational and economic interests. Individual management plans incorporated information from the area descriptions.

Public informational sessions were jointly held by the Parties in the communities of Old Massett, Masset, Port Clements, Skidegate, Queen Charlotte and Sandspit in January 2010 as part of a series of public consultation sessions being held to implement ecosystem based management measures on Haida Gwaii. Protected area maps with proposed marine boundaries were shared with the public and information was provided regarding the management planning process, and what opportunities would exist for future public review and input.

In February, March and April 2010, draft management plans were developed for public review and presented at open houses held in Old Massett, Tlell, Skidegate and Sandspit. The public review drafts were also posted on the Haida Nation website and the BC Parks' website for broader comment and circulation.

2.0 Values of Yaaguun Gandlaay

2.1 Significance and Role in the Protected Areas System

Yaaguun Gandlaay:

- is an area rich with cultural values including village sites and seasonal camps, a Haida food fishery, twenty-five registered archaeological sites and extensive cultural features within the forests;
- is part of an archipelago-wide system of protected areas that now protects half of the land base of Haida Gwaii;
- contains outstanding examples of old growth Sitka spruce, Western hemlock and Western redcedar riparian forests;
- features a popular walking trail and the site of the Golden Spruce, or Kiidk'yaas, on the bank of the Yakoun River which is tied to ancient Haida stories; and,
- protects the lower part of the Yakoun River watershed which is a very well known and popular Salmon, Cutthroat Trout and Steelhead fishing destination and the only estuary on Haida Gwaii that serves as habitat for all coastal salmon species.

2.2 Cultural Heritage

The people of the Haida Nation have occupied and collected food and materials from Yaaguun Gandlaay since time immemorial. The Haida have villages and seasonal camps within Yaaguun Gandlaay.

This management plan does not have a complete or comprehensive listing of all cultural features or cultural inventory in the area. There are far more cultural features, many that are not inventoried, and other cultural values which are held in secret by the Haida Nation.

Yaaguun Gandlaay is one of the most important Haida food fish gathering sites on Haida Gwaii.

Several archaeological sites contain a diversity of cultural features including culturally modified trees (CMTs), remnants of carved canoes, a fish weir, test hole trees, notched logs and tapered bark strips. Further work will undoubtedly reveal even more of these treasures.

Kiidk'yaas, also known as the Golden Spruce, grew on the bank of the Yakoun River. The site is tied to ancient Haida stories and was locally significant to many inhabitants of Haida Gwaii. This beautiful icon was cut down in 1997.

The management plan provides for the continuance of Haida culture through traditional use of the area. Some examples of traditional use within Yaaguun Gandlaay include monumental cedar and cedar bark harvesting, medicinal plant harvesting, hunting, fishing, trapping and food gathering. Yaaguun Gandlaay also provides the setting for spiritual use and the physical expression of culture through monumental art such as totems or establishment of traditional style infrastructure.

2.3 Natural Heritage

Yaaguun Gandlaay consists of forested ecosystems within the Queen Charlotte Lowland terrestrial ecosection. Yaaguun Gandlaay is classed as Coastal Western hemlock, Sub-montane wet hypermaritime (CWHwh1) according to the province's Biogeoclimatic Ecosystem Classification (BEC) system.

The marine component that has been recommended for protection is within the Dixon Entrance marine ecosection.

Yaaguun Gandlaay is underlain by undivided sedimentary rocks. The surficial geology is made up of coarse textured morainal deposits over plains and gentle slopes in the upland areas and fine textured fluvial material and some coarser deposits along the valley bottoms. Yaaguun Gandlaay is situated at the mouth of the Yakoun River, the largest river drainage on Haida Gwaii. The estuary is dominated by warm shallow, sandy and flat bottom physiography typified by low current and low exposure.

It contains some of the most productive forests on Haida Gwaii with over half (56%) in old growth condition. Slender-spiked mannagrass (*Glyceria leptostachya*) and angled bitter-cress (*Cardamine angulata*) are locally rare species that occur within the area.

The area contains important ecological associations including:

- The Western hemlock-Sitka spruce/Lanky moss (blue listed⁴);
- the Western redcedar-Sitka spruce/Skunk cabbage community (blue listed);
- the Western redcedar-Sitka spruce/Conocephalum community (blue listed);
- the Western redcedar-Sitka spruce/Foamflower (blue listed);
- the Western redcedar-Sitka spruce/sword fern community (blue listed);
- the Sitka spruce/Trisetum community (red listed); and,
- the Sitka spruce/False lily-of-the-valley community (red listed).

Yaaguun Gandlaay is the only estuary on Haida Gwaii that serves as habitat for all coastal salmon species. Florence Creek, Canoe Creek and the Yakoun River are fish-bearing with the latter hosting Chinook Salmon (wild and augmented), Chum Salmon, Coho Salmon, (wild and augmented), Coastal Cutthroat Trout, Eulachon, Pink Salmon, Sockeye Salmon, Steelhead, Aleutian Sculpin, Prickly Sculpin, Threespine Stickleback, River Lamprey and Western Brook Lamprey. Steelhead and Dolly Varden are also found in the area. This estuary contains important habitat for eelgrass and juvenile salmon.

The area hosts numerous listed species such as Marbled Murrelets (red-listed) and Northern Goshawks (laingi subspecies – red-listed).

⁴ Blue list = list of ecological communities, and indigenous species and subspecies of special concern in B.C. Red list = list of ecological communities, and indigenous species and subspecies that are extirpated, endangered or threatened in B.C. (<http://www.env.gov.bc.ca/atrisk/faq3.html#1>).

Of recent concern is the presence of introduced mammals of which Black-tailed Deer and Raccoons pose a threat to local ecosystems and species. Several alien invasive plants have been recorded in the area including burdock spp., bull thistle, and Canada thistle.

2.4 Recreation

In Yaaguun Gandlaay, recreational activities include hunting, and salmon fishing and angling for Steelhead and Cutthroat Trout on the Yakoun River. The Golden Spruce Trail is a popular 1.5 kilometre easy hike to the banks of the Yakoun River. Several road accessible riverside locations are suitable for day-use activities such as picnicking.

The recreation opportunities in Yaaguun Gandlaay are enhanced by a number of Forest Service roads that traverse the protected area including the QC Mainline, East Yakoun Mainline and the Yakoun Mainline.

2.5 Respectful Use of Natural Values

The Haida trap throughout Yaaguun Gandlaay.

The province has issued two trapline licenses.

3.0 Management Direction

3.1 Vision

Haida culture is the interrelationship of the people to the land.

Yaaguun Gandlaay will remain as the ancestors of the Haida Nation have known it.

Yaaguun Gandlaay and the remaining protected areas continue to provide the sustenance and spiritual values to this and future generations.

Yaaguun Gandlaay contributes to the protection of a Haida archaeological forest, a portion of the salmon-rich Yakoun River watershed, and representative Haida Gwaii flora and fauna including the unique intertidal and estuarine habitats associated with Yakoun Bay. Nearby roads provide access to fishing locations and a trail to the site of the legendary Golden Spruce.

3.2 Management Issues, Strategies and Performance Measures

Management strategies and objectives for Yaaguun Gandlaay have been identified through a thorough analysis of key issues that may affect the balance between protection and use. The management plan will always consider the well being of the land and marine areas first.

Knowledge, education and on-site monitoring will be primary tools of management.

The next stage of planning will be to develop site level management plans for select high use and sensitive areas.

Cultural Heritage

Key issues which may affect achievement of stated Haida cultural values in Yaaguun Gandlaay are described. These issues relate primarily to the need for detailed inventories on key values. Filling information gaps in the early stages will help prevent current and potential impacts from recreational use and other activities. Identified strategies focus on resolving or managing these issues (Table 1).

Table 1. Goals, Objectives, Issues, Strategies and Performance Measures for Cultural Heritage

Overall Management Goal: Preserve and maintain Haida social, ceremonial and cultural uses.

Objective	Issue	Strategy	Performance Measure
<p>Identify, protect and maintain Haida cultural heritage features, archaeological sites and traditional use locations.</p>	<p>Many cultural heritage features, archaeological sites and traditional use locations are well documented, but information for some areas may be incomplete. Where there is limited information it is difficult to ensure that the values are protected.</p>	<p>Continue historical and ethnographic research, cultural heritage field mapping and inventory programs where knowledge gaps exist.</p>	<p>Completed historical and ethnographic research and cultural heritage field inventories.</p>
	<p>Certain uses can cause unintended disturbance to cultural heritage and traditional use sites and features.</p>	<p>Identify and report where cultural heritage features, archaeological sites and/or traditional use resources or sites exist within areas that have periodic human use.</p>	<p>Prior to any site specific development or within areas that receive recreational use, ensure cultural heritage sites and features identified.</p>
		<p>Identify and evaluate extent of threats and implement site specific protective measures for sensitive or special feature sites, such as those in Appendix 2, which may include:</p> <ul style="list-style-type: none"> - marking areas as off-limits; - focusing use away from sites; - developing site level management plans for select high-use and culturally sensitive areas; and/or, -public information/interpretation initiatives. 	<p>Appropriate measures established at sensitive sites.</p>
		<p>Consider opportunities for monitoring activity at most vulnerable sites.</p>	<p>Monitoring of activities achieved.</p>
<p>Ensure that new uses are compatible with Haida traditional activities.</p>	<p>Many traditional and sustenance harvesting sites and activities are well documented, but information for some areas may be incomplete or withheld for traditional reasons and customs. Where there is limited information it is difficult to ensure that the values are protected.</p>	<p>Support efforts to identify and monitor traditional and sustenance harvesting sites and activities where knowledge gaps exist.</p>	<p>Completed inventories of traditional use and sustenance harvesting areas.</p>
		<p>Visitors respect traditional reasons and customs for privacy through dialogue and understanding with either Party.</p>	<p>Visitors are respectful people on the land.</p>
	<p>There are traditional cultural use activities that can benefit from monitoring or facilitation using existing Haida Nation programs.</p>	<p>Identify uses (such as cultural cedar harvesting) that benefit from continued facilitation from the Haida Nation to ensure sustainable and on-going access to traditional resources, recognizing that many activities are preferable to occur in non-protected areas.</p>	<p>Traditional users are engaged in specific uses and programs. Linkages are made with on-going Haida Nation and provincial administrative processes such as Haida Gwaii cultural wood permit process).</p>

Natural Heritage

Key issues which may affect achievement of stated biological diversity objectives in Yaaguun Gandlaay have been identified. These issues relate primarily to the desire to maintain or restore important habitats, minimize potential impacts from introduced species, and create more complete inventories as a way to prevent negative impacts from recreational use within Yaaguun Gandlaay. Identified strategies focus on resolving or managing these issues (Table 2).

Table 2. Goals, Objectives, Issues, Strategies and Performance Measures for Natural Heritage

Overall Management Goal: Protect and maintain the diversity of terrestrial, intertidal and marine ecosystems.			
Objective	Issue	Strategy	Performance Measure
Identify and protect regionally important, and rare and at risk ecosystems, ecological communities and species.⁵	Lack of inventory of values results in unintended impacts on the protected area's rare and at risk ecosystems, ecological communities and species.	Identify research and inventory needs. Support programs designed to fill information gaps with emphasis on rare and at risk ecosystems, ecological communities and species.	Number of initiatives underway that enhance information. Comprehensive knowledge base achieved.
		Identify and support restoration initiatives for the rare and at risk ecosystems and species, particularly harvested riparian areas, fish habitat, and regeneration of understory herb and shrub layers, including Western red cedar where appropriate.	Integrity of riparian/fish habitat, understory vegetation, and rare plant assemblages restored/maintained.
	There is evidence that current use is causing site-level disturbance and declines in the abundance and distribution of rare and at risk ecosystems, ecological communities and species.	Increase public and visitor awareness about waterfowl and/or shorebird sensitivities and their key habitats and provide guidelines for appropriate conduct to avoid impacts.	Information package and guidelines available regarding waterfowl and/or shorebird needs, approach standards, etc., and are utilized by visitors to minimize impacts.
		Where necessary, limit access to protect rare and at risk ecosystems, ecological communities and/or sensitive species such as nesting waterfowl or shorebirds.	Access restrictions in place where appropriate.
	Waterfowl and/or shoreline bird breeding, nesting and foraging sites require special considerations. Eelgrass beds, for example, are important rearing habitat for fish and crabs, and provide foraging habitat for waterfowl such as Brant Geese and shoreline birds, but they appear to have been adversely impacted by previous activities.	Support efforts to maintain integrity of intertidal and riparian habitat.	Development does not occur within sensitive habitat areas. Activities that alter shoreline and/or intertidal or inshore marine waters are prevented.
		Consider acquisition of District Lot 1506 at the mouth of the Yakoun River.	Key in-holding property is acquired.
		Support efforts to monitor presence and distribution of eelgrass habitat, and contribute to restoration programs.	Eelgrass beds presence and distribution are monitored and abundance sustained.

⁵ To recognize the likely occurrence of distinctiveness on Haida Gwaii, rare is applied to Conservation Data Centre (CDC)-listed species and ecological communities as well as identified locally rare or at risk species and ecological communities.

Overall Management Goal: Protect and maintain the diversity of terrestrial, intertidal and marine ecosystems.

Objective	Issue	Strategy	Performance Measure
	Introduced species are displacing and harming native flora and fauna.	Evaluate presence, distribution and threat of introduced species.	Presence, distribution and threat of introduced species are documented.
		Undertake prevention initiatives and introduced species control programs on a co-ordinated and priority basis. Mechanical and biological methods are preferred. Monitor and report on efficacy of efforts.	Control programs in place. Target species controlled or removed. Disturbance and predation levels reduced. Monitoring reports completed.
		Support efforts in on-going introduced species research, education and public information programs.	Program supported.
	Without knowing the effects of global climate change and sea level rise on ecosystems, ecological communities and species, it is difficult to know how to mitigate negative impacts to these values.	Support programs designed to monitor environmental change and impacts.	Monitoring programs supported.
		Initiate adaptive management practices and processes if required.	Adaptive management initiated.
	Silviculture activities and road deactivation within Yaaguun Gandlaay (from forest harvesting prior to establishment) have an impact on stated values.	Work with Ministry of Forests, Lands and Natural Resource Operations and licencees to ensure outstanding obligations and any silviculture activities and road deactivation plans are timely and consistent with Yaaguun Gandlaay management objectives.	Ensure obligations are met in a timely manner consistent with Yaaguun Gandlaay management plan.

Recreation

Key issues which may support provision for recreational opportunities in Yaaguun Gandlaay are described. These issues relate primarily to maintenance of the current access opportunities and trail system, and potential impacts on stated cultural or ecological values from recreational use. Identified strategies focus on resolving or managing these issues (Table 3).

Table 3. Goals, Objectives, Issues, Strategies and Performance Measures for Recreation

Overall Management Goal: Provide for limited commercial and public recreational use in a largely undisturbed natural environment.			
Objective	Issue	Strategy	Performance Measure
Identify opportunities for appropriate wilderness	There is a need to determine appropriate and respectful approaches to recreational visits in Yaaguun Gandlaay. Where there is limited	Develop a baseline inventory of structures and current and potential recreational uses, with emphasis on use or sites near cultural or natural features of interest.	Completed baseline inventory of recreational opportunities, structures and use.

Overall Management Goal: Provide for limited commercial and public recreational use in a largely undisturbed natural environment.

Objective	Issue	Strategy	Performance Measure
recreation and identify any necessary associated facilities.	information it is difficult to ensure that the values are protected.	Implement a Backcountry Recreational Impact Monitoring (BRIM) assessment on current recreation sites.	Annual frontcountry site inspections completed with BRIM reports every three years. Bi-annual backcountry site inspections completed with BRIM reports every four years.
	Recreational use can impact other heritage and natural values.	Develop criteria to ensure recreational use is compatible with the cultural and natural heritage features or values.	Criteria are developed to determine acceptable limits and avoidance of impacts, and BRIM reports are used to inform adaptive management on a site specific basis.
	Golden Spruce Trail established but requires regular upkeep.	Maintain access to trail and manage for higher levels of use as a day-use destination area.	Trail accessible and well maintained as warranted by level of use.
	The current level of public awareness of available recreation opportunities affects the ability to meet the economic objectives.	Identify recreation opportunities and facilities in promotional and marketing materials in consideration of existing cultural activities.	Development and distribution of promotional information and materials.
		Support development of on-site public interpretation media.	On-site public interpretation facilities developed.

Respectful Use of Natural Values

Key issues which may affect achievement of stated objectives related to the respectful use of Yaaguun Gandlaay relate primarily to the potential conflict between the use of and potential impacts on the cultural and natural and values that have been identified. Identified strategies focus on resolving or managing these issues (Table 4).

Table 4. Goals, Objectives, Issues, Strategies and Performance Measures for Respectful Use of Natural Values⁶

Overall Management Goal: Provide for compatible opportunities where appropriate.

Objective	Issue	Strategy	Performance Measure
Identify appropriate uses and support the delivery of economic benefits.	Small-scale ⁷ tree removal is an acceptable management option when required for human health and safety, or to facilitate approved development or for ecological restoration or forest health management projects.	Identify appropriate opportunities for small-scale tree removal.	All projects compliant with management plan direction.

⁶ Natural resource uses and developments must be consistent with the cultural, natural and recreational purposes of Yaaguun Gandlaay.

⁷ A few trees, or less than 1 hectare in area.

Overall Management Goal: Provide for compatible opportunities where appropriate.

Objective	Issue	Strategy	Performance Measure
	Current and future commercial uses by the Haida Nation including infrastructure development may be needed to enhance the visitor experience.	Proposals will be subject to meeting the goals, objectives and protection of values outlined in this management plan.	Visitor experience is enhanced by cultural infrastructure.
	Harvesting of forest botanicals ⁸ by Haida medicinal practitioners will continue in Yaaguun Gandlaay. Any harvesting of forest botanicals by others can be permitted if the harvest is sustainable, and will not impact identified values and/or conflict with other management objectives.	Authorizations will not be issued to any individual that may compromise the natural values.	Monitor harvest levels for different botanicals.
		Specific proposals for access will be considered in the context of maintaining cultural and natural values.	All proposals are compliant with management plan's direction.
		To guide conditions for commercial permit approvals, consider method and scale of harvest (quantity over area), location (to gauge degree of compatibility with traditional or recreational users), and level of benefit to local economy.	Commercial use is consistent with balancing traditional/sustenance use, ecosystem integrity and local economic benefit.
	The nature of economic benefits for the Haida Nation in Yaaguun Gandlaay needs to be defined.	Utilize an appropriate government to government forum to access economic opportunities for the Haida Nation.	Develop and maintain an economic plan for protected areas on Haida Gwaii that assists Haida individuals and businesses to take advantage of economic and employment opportunities.

⁸ Forest botanicals are non-timber-based products gathered from forest and range land with seven recognized categories: wild edible mushrooms, floral greenery, medicinal products, fruits and berries, herbs and vegetables, landscaping products, and craft products.

3.3 Zoning

Zoning assists in the planning and management of protected areas. In general terms, zoning divides an area into logical units to apply consistent management objectives. The management units identified in Yaaguun Gandlaay are in accordance with Haida Gwaii Yah'guudang - respect for all living things - and reflect the intended land use, the acceptable level of development and use, and the level of management required (Figure 3).

The following two units have been identified within Yaaguun Gandlaay and uses that have been deemed as appropriate for each of the units are identified in Appendix 1.

Management Unit Type 4

Management Unit Type 4⁹ is dedicated to maintaining intact ecological processes and protecting natural biological diversity found within this area. This unit encompasses the entire marine component of Yakoun Bay.

The management activities in this unit focus on maintaining and sustaining cultural use, natural biodiversity and ecological processes and protecting habitat for species. Additionally, a secondary objective will be to manage for some limited water-based access for public recreation in a largely natural environment.

Management Unit Type 5

The purpose of Management Unit Type 5¹⁰ is to protect Haida cultural features and access for social and ceremonial uses and maintain natural biodiversity and ecological processes. This unit also allows for the enjoyment of the natural environment where compatible with the cultural and natural values. Some day-use recreational opportunities, such as hiking and fishing are appropriate.

Management activities in the unit will focus on efforts to maintain and sustain cultural use, natural biodiversity and ecological processes and protecting habitat for species. Additionally, a secondary objective will be to manage for some development or use of natural resources while maintaining opportunities for public recreation.

⁹ This unit corresponds to the BC Parks Special Feature Zone.

¹⁰ This unit corresponds to the BC Parks Nature Recreation Zone.

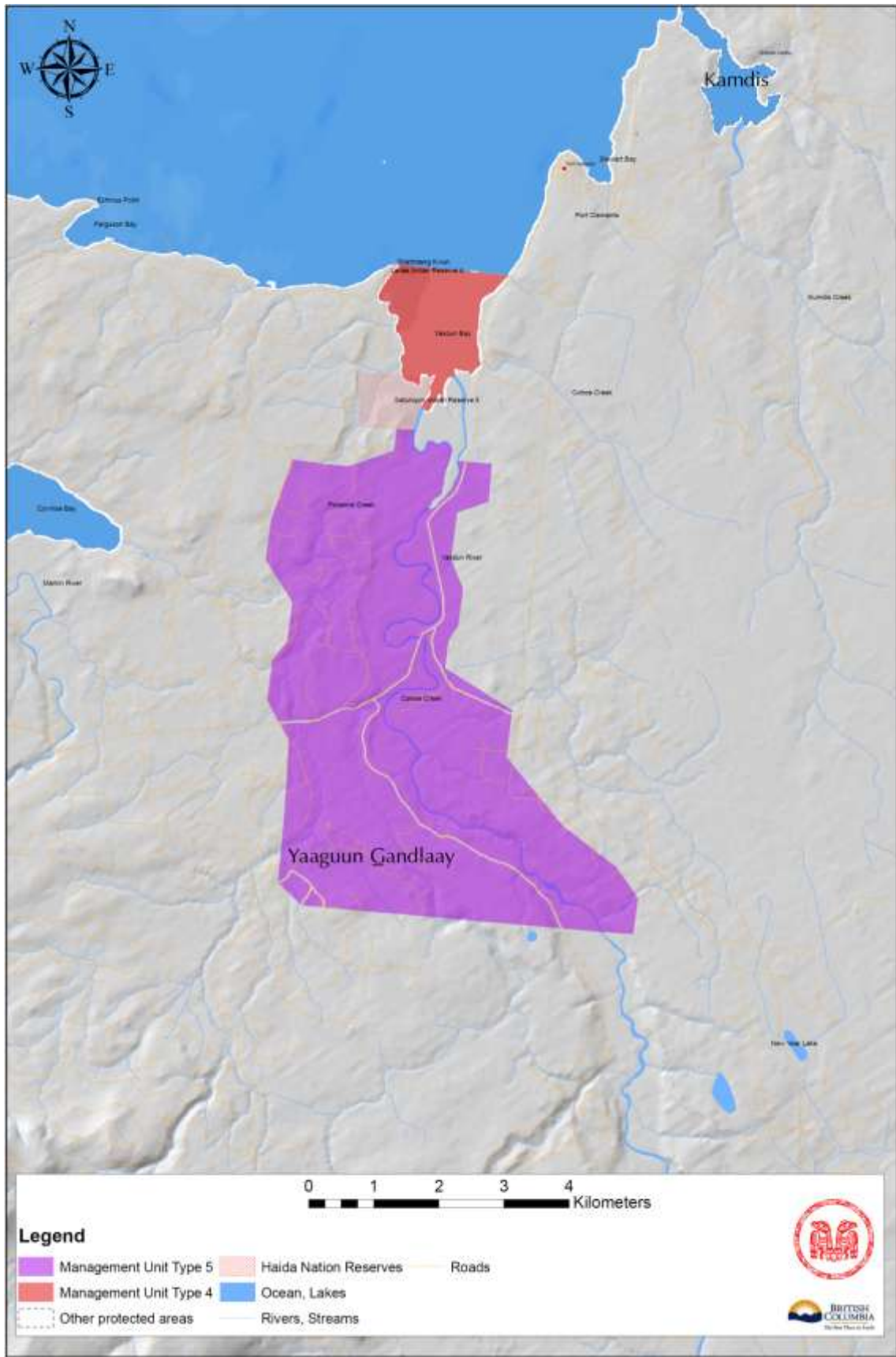


Figure 3. Yaaguun Gandlaay Management Zones Map

4.0 Plan Implementation

Implementation of the Yaaguun Gandlaay Management Plan will involve identifying strategies and achieving stated performance measures, while focusing on implementing high priority strategies. Strategies and performance measures will be prioritized in terms of cost, feasibility and overall benefit to management.

4.1 Implementation Resources

The Parties will develop and maintain a collaborative workplan for the protected areas. Items to be included in the workplan will include a description of the resources available during a given time period including staff and any additional operating or project funds that may support identified initiatives. The Haida Nation will dedicate staff and resources as funding allocations permit. The Ministry of Environment will seek project-specific funding to implement priority strategies and monitor key performance measures, subject to provincial funding availability. Specific projects will be evaluated for priority in relation to the overall protected areas system. Many of the initiatives contemplated are not funded as part of core ministry activities so jointly seeking funds from available funding sources either provincially or externally will be considered.

Permit holders will be required to collect and provide information related to performance measures and the overall state of Yaaguun Gandlaay. Such requirements will be defined in approved permits and in any protocols between the Haida Nation and the permittee.

4.2 Priority Implementation

As part of developing on-going workplans, priorities will be developed for the implementation of strategies and performance measures. A key priority is to implement management strategies which support cultural use and cultural inventory information. These priorities will be developed based on Haida Nation and provincial interests taking into account the requirements of other protected areas on Haida Gwaii such as developing baseline data to support management strategies.

4.3 Reporting

The Parties will prepare a summary bi-annual report describing progress on implementation of the protected area management plans.

4.4 Management Plan Review

In order to ensure the management of Yaaguun Gandlaay remains relevant and effective, an adaptive management approach will be used. Adaptive management involves a five-step process of planning, action, monitoring, evaluation and revision of the management plan to reflect lessons learned, changing circumstances and/or objectives achieved.

The management plan will be reviewed as required by the Parties and may be affirmed, revised, or amended by written agreement. A review of the management plan should generally be triggered by the complexities of the management issues in the protected area and/or a significant change in circumstances (e.g., a natural disaster, major environmental change or discovery of a major new archaeological site), and not by a specific time period.

A management plan review looks for any necessary updates to the management plan that are required to keep management direction current and relevant, correct the intent of a policy statement or address some error or omission. Any updates or changes to the content of the management plan will be addressed through a formal management plan amendment process. The amendment process will include an opportunity for public input.

Appendix 1 – Appropriate Uses Chart

The following table lists existing and potential future uses or activities in Yaaguun Gandlaay. However, it is not an exhaustive list of all uses that may be considered in this protected area. The table also indicates the uses which the management planning process has confirmed are not appropriate in Yaaguun Gandlaay. Additionally, a permit cannot be issued for commercial logging, mining, or hydroelectric power generation, other than local run-of-the-river projects that supply power to approved uses in Yaaguun Gandlaay or nearby communities that do not otherwise have access to hydro-electric power.

The table must be reviewed in conjunction with the other sections of the management plan, including the descriptions, vision, objectives and strategies. Uses are subject to existing policies and any relevant impact assessment processes.

Activity/Facility	Management Unit	
	Type 4 ¹¹	Type 5 ¹²
Cultural Heritage		
Cultural, Ceremonial, Food Gathering and Social Uses	Y	Y
Cultural Infrastructure (facility-based)	Y	Y
Natural Heritage		
Fire Management ¹³	Y	Y
Forest Insect/Disease Control	Y	Y
Noxious Weed Control	Y	Y
Scientific Research	Y	Y
Recreation		
Administrative Buildings and Compounds	N	N
Aircraft Access	Y	Y
Anchorage	Y	N/A
Backcountry Huts and Shelters	N	N2
Boat Launches	N	N
Boating (Motorized)	Y	Y
Boating (Non-motorized)	Y	Y
Camping – backcountry or boat accessible	Y	Y
Campsites and Picnic Areas – road accessible	N	Y
Commercial Recreation (facility-based)	N	N
Commercial Recreation (no facilities)	Y	Y
Fishing	Y	Y
Heli-hiking	N	N
Hiking/Backpacking/Walking	Y	Y

¹¹ This unit covers 232 hectares of marine foreshore in Yaaguun Gandlaay.

¹² This unit covers 2,456 hectares of land and no hectares of marine foreshore in Yaaguun Gandlaay.

¹³ As per fire management plan.

Activity/Facility	Management Unit	
	Type 4 ¹¹	Type 5 ¹²
Hunting ¹⁴	Y	Y
Interpretation and Information Buildings / Signs	N1	Y
Mechanized Off-road Access (non-motorized – i.e., mountain biking)	N	N
Motorized Off-road Access (i.e., 4x4, motorcycles)	N	N
Pack Animal Use	N	N
Trails (hiking)	Y	Y
Wharves/docks	Y ¹⁵	N/A
Wildlife/Nature Viewing	Y	Y
Respectful Use of Natural Values		
Angling Guiding	Y	Y
Aquaculture (finfish)	N	N/A
Aquaculture (shellfish)	N	N/A
Commercial Botanical Forest Products	Y	Y
Commercial Filming	Y	Y
Commercial Marine Plant Harvesting	N	N/A
Communication Sites	N	N
Grazing (domestic livestock)	N	N
Firewood Cutting (personal use)	N	Y
Guide Outfitting ¹⁶	Y	Y
Independent Hydro Electric Power Projects & Infrastructure	N	N
Marine-based Manufactured Log Recovery	Y	N/A
Trapping	Y	Y

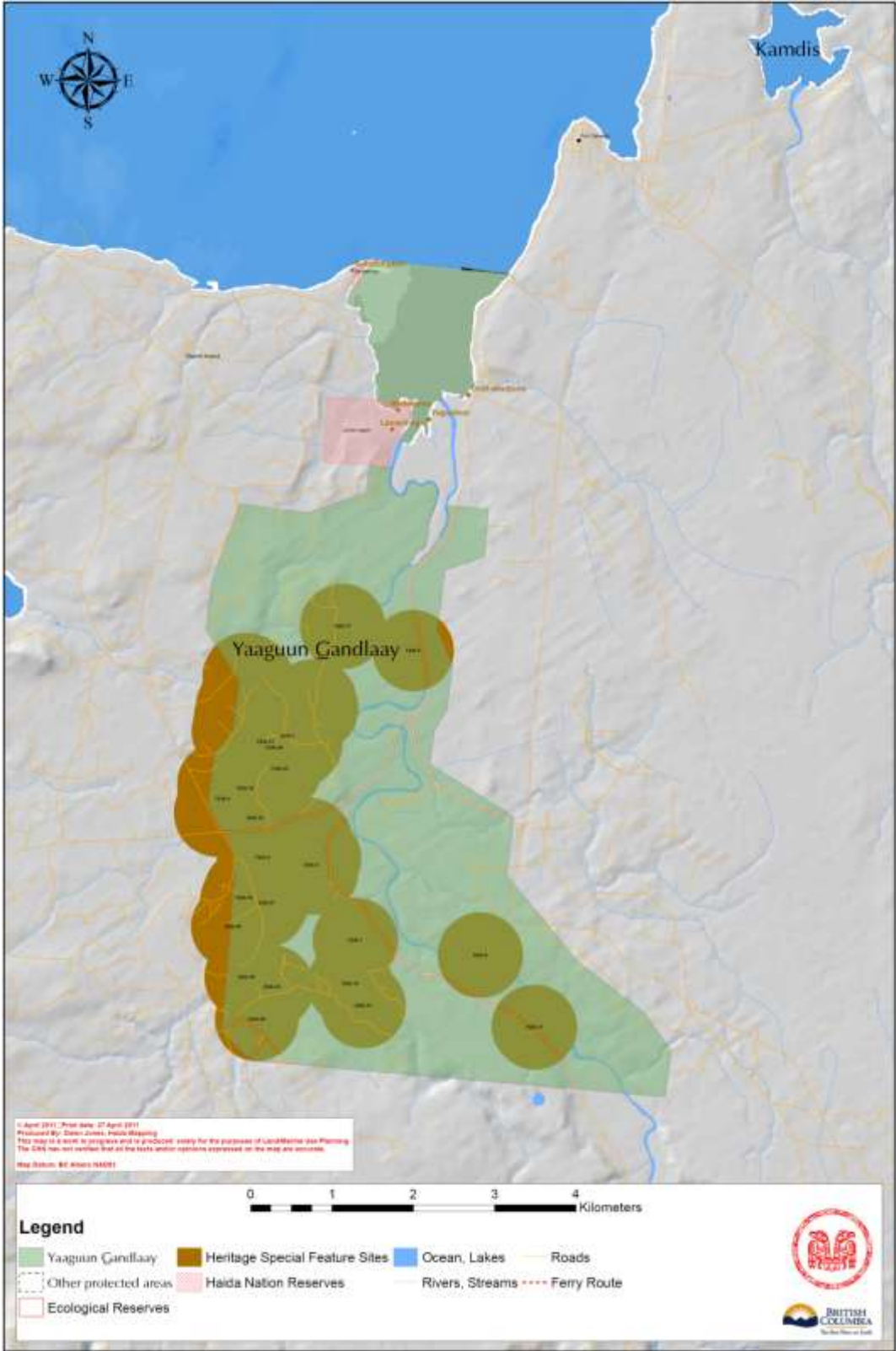
- Y Appropriate
N Not appropriate
N1 Not appropriate except for expressed management purposes as identified in the Management Plan
N2 Not appropriate, but if the specific activity or facility existed at the time of establishment of the protected area, it is normally appropriate for it to continue
N/A Not applicable

¹⁴ The management of black bear hunting will be consistent with outcomes of negotiations between the Council of the Haida Nation and Province of British Columbia. If required, changes will be reflected in amendments to this management plan.

¹⁵ May be considered for access to private land holdings only.

¹⁶ The guide outfitting certificate is owned by the Council of the Haida Nation. There will be no commercial black bear hunting.

Appendix 2 – Heritage Special Feature Sites



Yaaguun Gandlaay Management Plan

Approved by:



April Churchill
Vice President of the Haida Nation

July 29, 2011

Date



Brian Bawtinheimer
Director, Parks Planning & Management Branch
BC Parks

August 2, 2011

Date

Back Cover Photo: Berry Wijdeven

